

AquaBarrier™ Air & Vapour Barriers

BUILDING ENVELOPE WATERPROOFING

IKO.COM/COMM

- Self-adhering
- Outstanding Air and Vapour Protection
- Easy to Install

Provides superior protection in wall assemblies where an air and vapour barrier is required.



IKO® COMMERCIAL

AquaBarrier Air & Vapour Barriers

BUILDING ENVELOPE WATERPROOFING

Rely on IKO for superior building envelope product integrity.



Fully integrated with IKO's
Commercial Limited
Warranty Program

IKO.COM/COMM

Self-Adhering

AquaBarrier AVB is manufactured by integrally bonding SBS modified asphalt to a high density, cross-laminated woven polyethylene film. The result is a self-adhering building envelope membrane providing superior performance in wall assemblies where an air and vapour barrier is required.

Excellent Air and Moisture Resistance

The IKO AquaBarrier AVB backsurfacing is an easily removed silicone release paper. When installed according to IKO specifications and used with an IKO approved primer or adhesive, AquaBarrier AVB provides a superior retarder to moisture vapour transmission and air leakage.

Uses

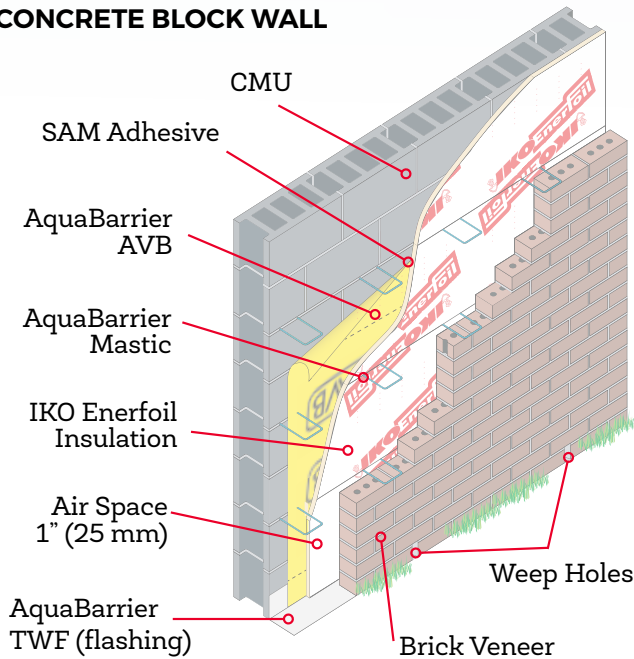
- Masonry cavity walls with block back-up.
- Shear poured concrete walls.
- Metal cladding systems.
- Curtain walls.
- Rain screen walls.
- Wall/roof transitions (parapets).
- Exterior insulation and finish systems (EIFS) systems.
- Available in AVB standard @ 3", 4", 6", 9", 12", 18", 24", 26" and 36" lengths (40 mil thickness).
- Available in AVB Low Temp @ 18", 24", 26", and 36" lengths (40 mil thickness).



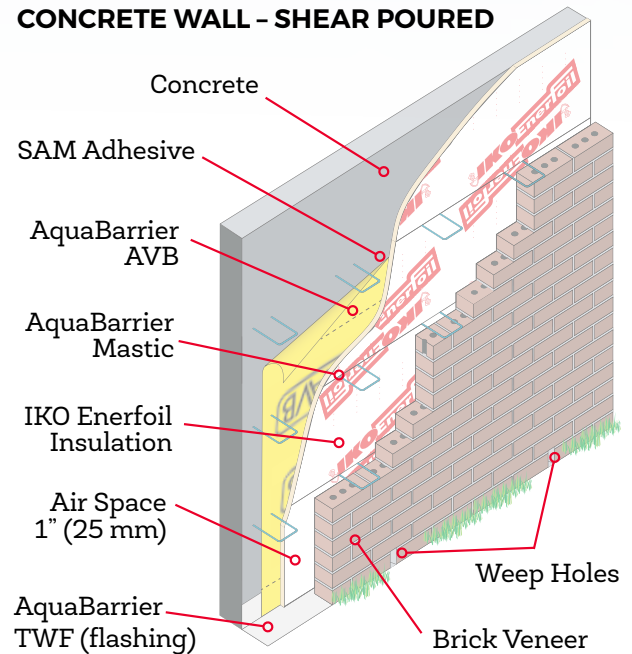
AquaBarrier Air & Vapour Barriers

BUILDING ENVELOPE WATERPROOFING

CONCRETE BLOCK WALL



CONCRETE WALL - SHEAR POURED



Draft Specifications

- Draft specs are available from www.iko.com/comm/ or your local IKO Commercial Representative.

Codes & Approvals

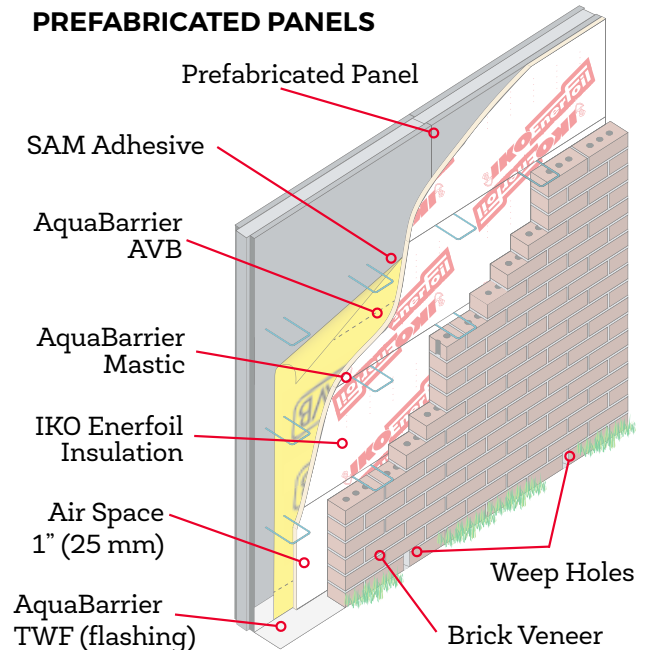
- Conforms to CGSB 37-GP-56M for Modified Bitumen Membranes.
- ASTM E2357-11 (test method for determining air leakage of Air Barrier Assemblies) tested and approved.

Technical Support

- Hands-on demonstrations and applicator training.
- On-site reviews.
- Specification assistance.

ISO 9001 - 2008 REGISTERED FACILITY

PREFABRICATED PANELS



AquaBarrier Air & Vapour Barriers

BUILDING ENVELOPE WATERPROOFING

IKO.COM/COMM

Accessory Products

IKO S.A.M. Adhesive and S.A.M. LVC Adhesive

- Dries to a high tack, providing excellent adhesion properties during the application process on horizontal or vertical surfaces.
- Suitable for use on most substrates including wood, glass mat, gypsum core sheathing, masonry, concrete and metal.

IKO Water Based Adhesive

- Solvent free surface preparation intended for use with IKO self-adhering roof membranes, AquaBarrier self-adhering membranes or heat-welded membrane products.
- Suitable for use on most substrates including wood, glass mat, gypsum core sheathing, masonry, concrete and metal.

AquaBarrier TWF (through wall flashing)

- AquaBarrier TWF is a cold-applied, self-adhering sheet membrane designed for use as a through wall flashing system. It is made by integrally bonding a high density cross-woven film to SBS modified rubberized asphalt with a robust, puncture-resistant facer.
- TWF is used in adhered transition flashing applications (floor to wall and foundation to wall transitions, balcony shelf, etc) directly over masonry, concrete, gypsum, wood or metal substrates which have been properly primed.

AquaBarrier Mastic

- IKO AquaBarrier Mastic is a modified asphalt sealant that is formulated with synthetic rubbers for longevity, and glass fibers for extra strength.
- IKO AquaBarrier Mastic sealant is fully compatible with IKO waterproofing, air & vapour barrier and roofing systems.



AquaBarrier Self-adhering Building Envelope Membrane System

CHARACTERISTICS	AquaBarrier AVB Low Temp	AquaBarrier AVB	TEST METHOD
Length	22.86 m (75 ft)		ASTM D5147
Width	457 mm (18 in), 610 mm (24 in) 660 mm (26 in), 914 mm (36 in)	75 mm (3 in) 102 mm (4 in), 152 mm (6 in) 229 mm (9 in), 300 mm (12 in) 457 mm (18 in), 610 mm (24 in) 660 mm (26 in), 914 mm (36 in)	ASTM D5147
Thickness	1 mm (40 mils)		ASTM D5147
Units per Pallet	3 in - 25 boxes (12 per box) 4 in - 25 boxes (9 per box) 6 in - 25 boxes (6 per box) 9 in - 25 boxes (4 per box)	12 in - 25 boxes (3 per box) 18 in - 25 boxes (2 per box) 24 in - 50 rolls per pallet 26 in - 32 rolls per pallet 36 in - 30 rolls per pallet	—
Pallet Size	36 in - 132 cm x 111 cm (52 in x 44 in) 3-26 in - 119 cm x 119 cm (47 in x 47 in)		

Find out more about our products now by talking to an IKO Sales Representative, your professional contractor or contact us directly at: Canada **1-855-IKO-ROOF** (1-855-456-7663), United States **1-888-IKO-ROOF** (1-888-456-7663) or visit our website at: www.iko.com/comm.

* Please refer to Product Data Sheets for more technical information.

Note: The information in this document is subject to change without notice. IKO assumes no responsibility for errors that may appear in this document.