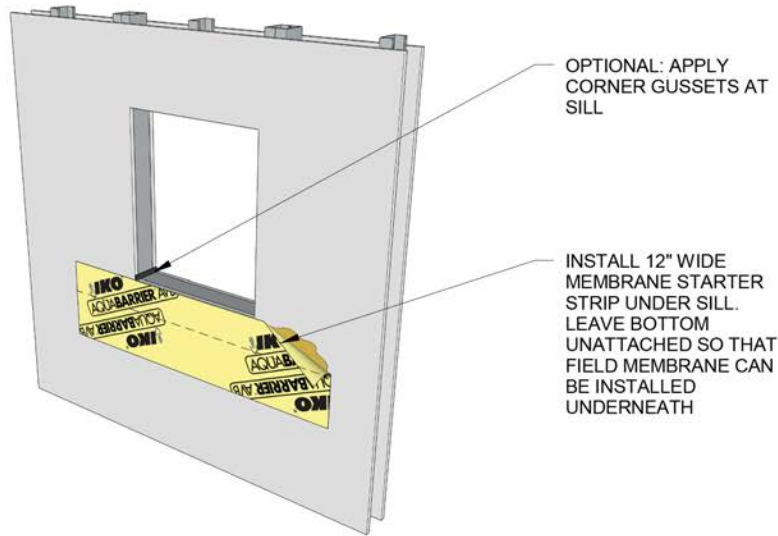


Table of Contents

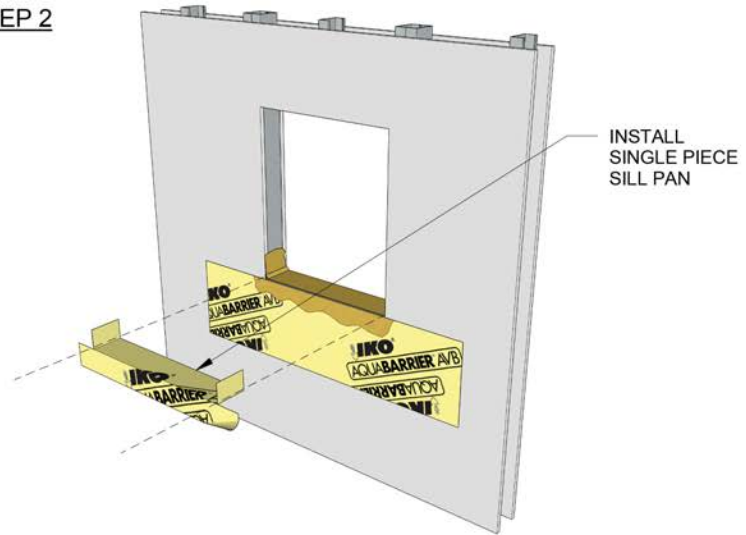
Title	Number
IKO AquaBarrier™ AVB — Window Flashing Detail	AVB-1.1
IKO AquaBarrier AVB — Window Flashing Detail	AVB-1.2
IKO AquaBarrier AVB — Window Flashing Detail	AVB-1.3
IKO AquaBarrier AVB — Door Flashing Detail	AVB-2
IKO AquaBarrier AVB — Penetration Flashing Detail	AVB-3
IKO AquaBarrier AVB — Wall Transition	AVB-4
IKO AquaBarrier AVB – Masonry on Stud Wall Assembly	FP-2
Through Wall Flashing	CD-1
Insulated Concrete Form Wall Assembly	ICF-1
Insulated Concrete Form Foundation Detail	ICF-2
IKO AquaBarrier VP — Window Flashing Detail	VP-1.1
IKO AquaBarrier VP — Window Flashing Detail	VP-1.2
IKO AquaBarrier VP — Window Flashing Detail	VP-1.3
IKO AquaBarrier VP — Door Detail	VP-2
IKO AquaBarrier VP — Penetration Flashing Detail	VP-3
IKO AquaBarrier VP — Wall Transition	VP-4
IKO Enerfoil® Detail with IKO AquaBarrier AVB	INS-1
IKO Ener-Air® Detail	INS-2
IKO Enerfoil Detail with Seam Tape	INS-3
IKO Ener-Air Detail with Seam Tape	INS-4
IKO Blindsight Waterproofing Typical Wall Detail	BS101
IKO Blindsight Wall Base Detail	BS102
IKO Blindsight Penetration Detail	BS103
IKO Blindsight Tie Back Detail	BS104
IKO Blindsight Horizontal Typical Application	BS105
IKO Blindsight Column Penetration	BS106
IKO Blindsight Service Pipe Penetration	BS107

IKO AquaBarrier™ AVB — Window Flashing Detail

STEP 1

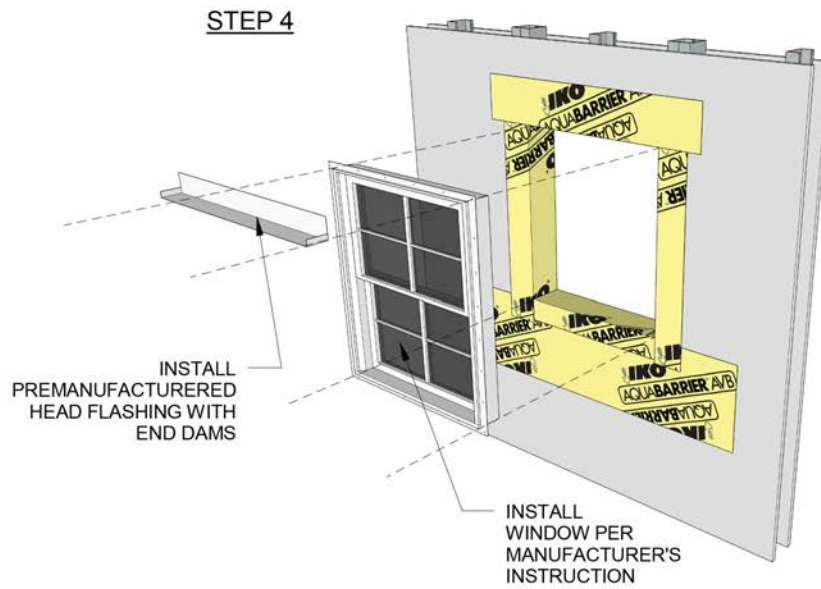
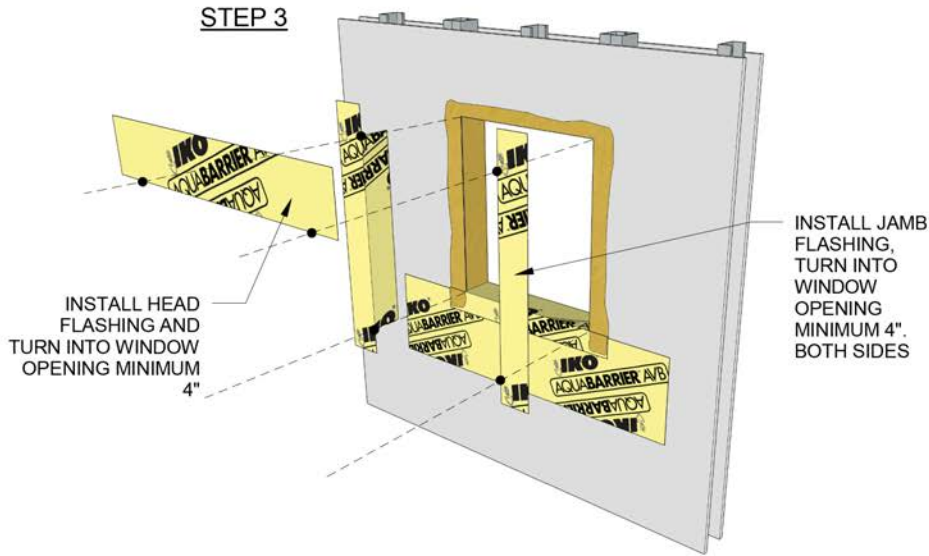


STEP 2



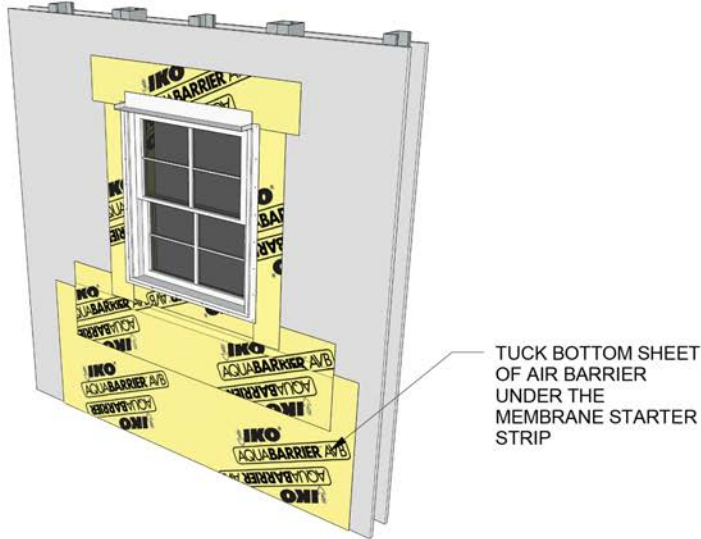


IKO AquaBarrier™ AVB — Window Flashing Detail

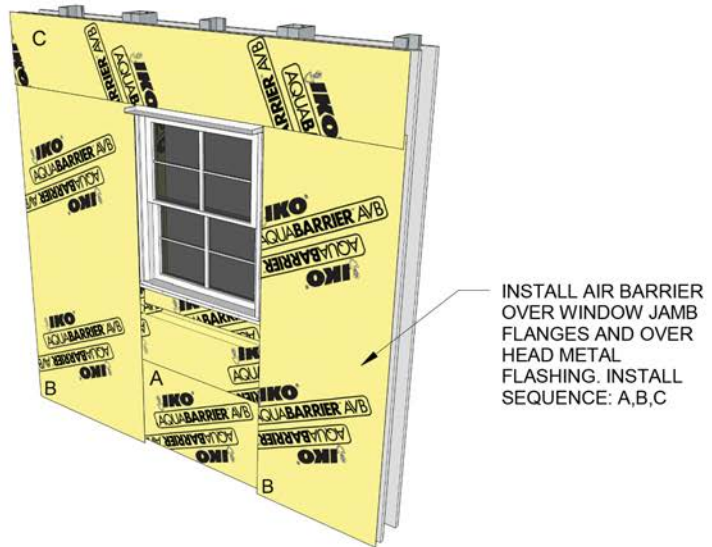


IKO AquaBarrier™ AVB — Window Flashing Detail

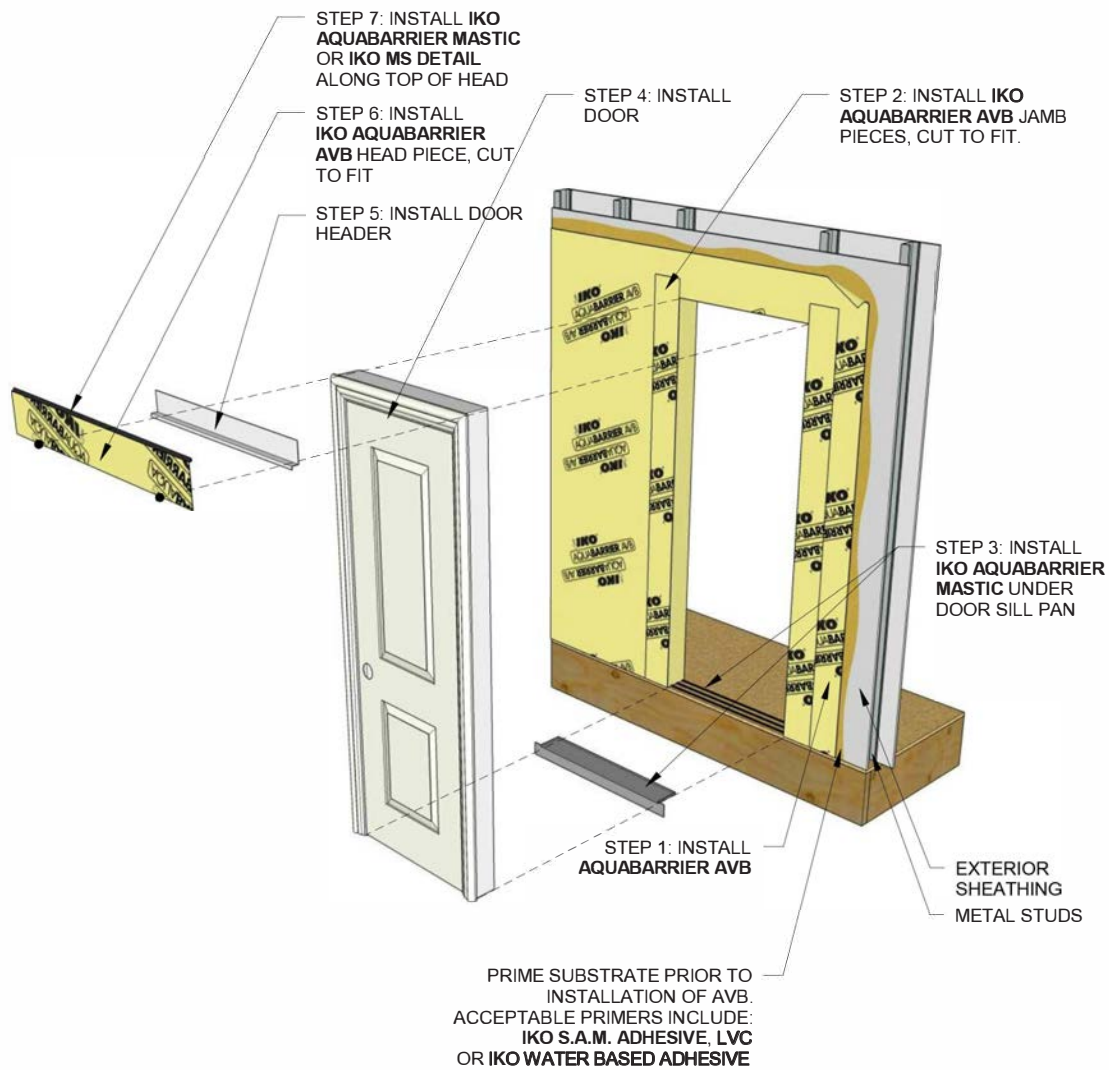
STEP 5



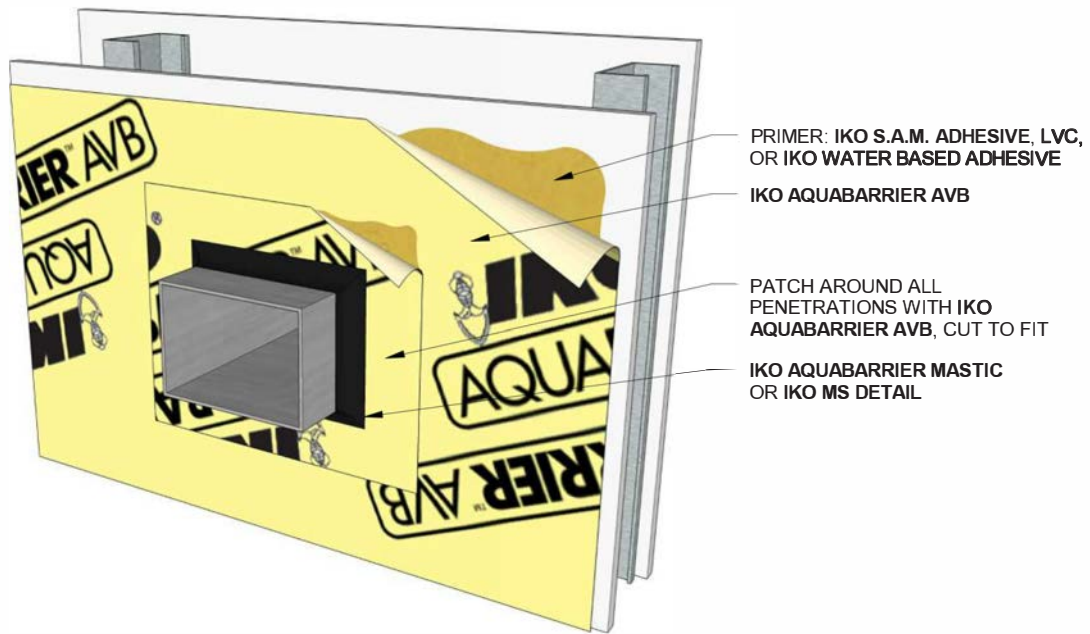
STEP 6



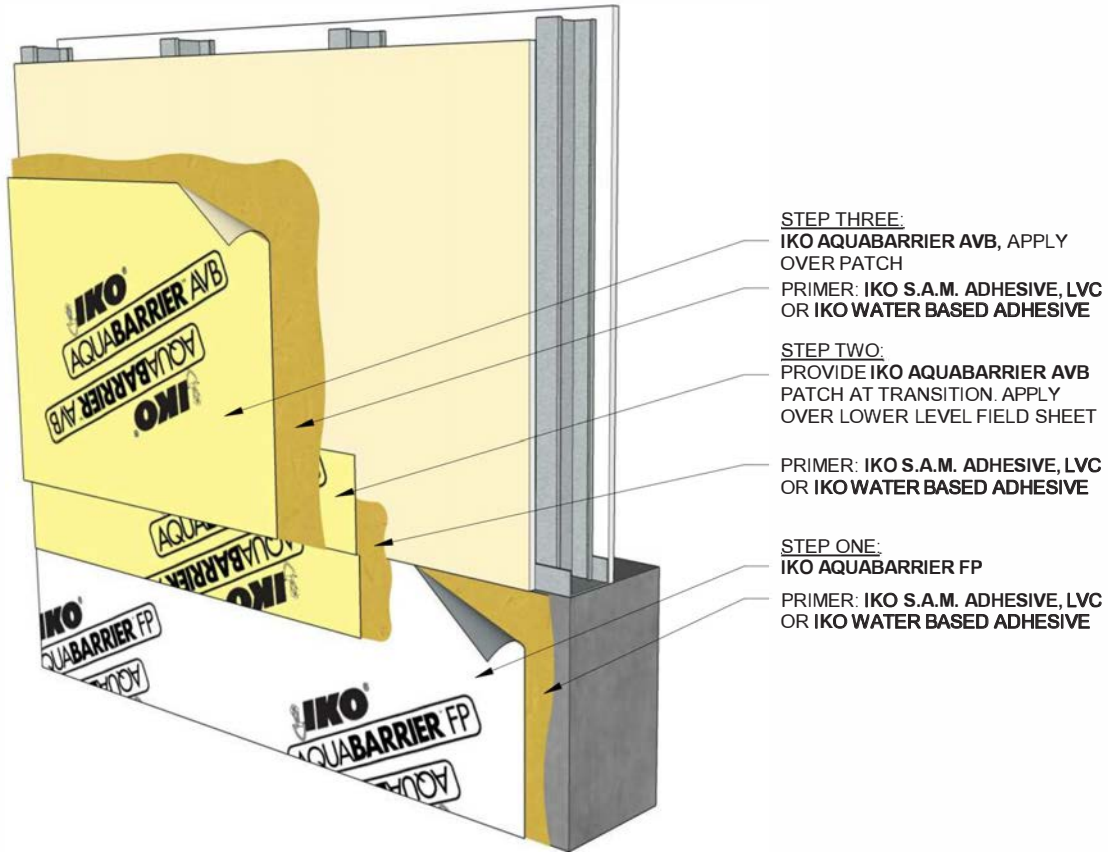
IKO AquaBarrier™ AVB — Door Flashing Detail



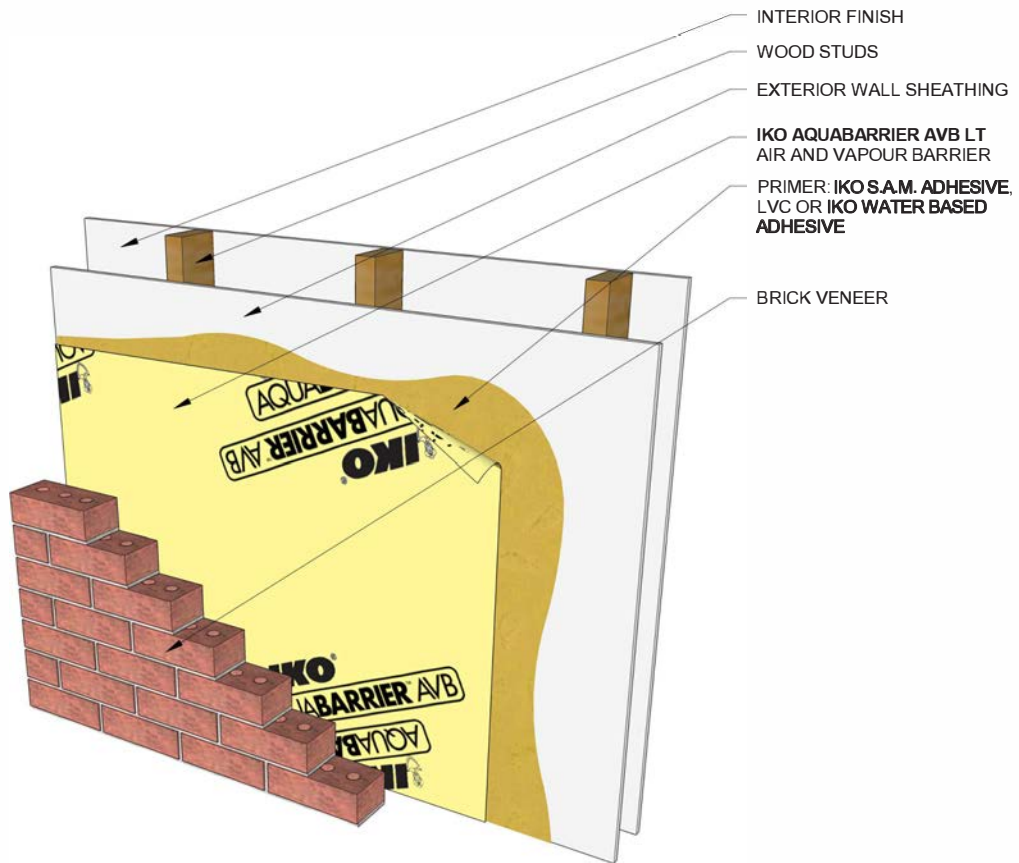
IKO AquaBarrier™ AVB — Penetration Flashing Detail



IKO AquaBarrier™ AVB — Wall Transition

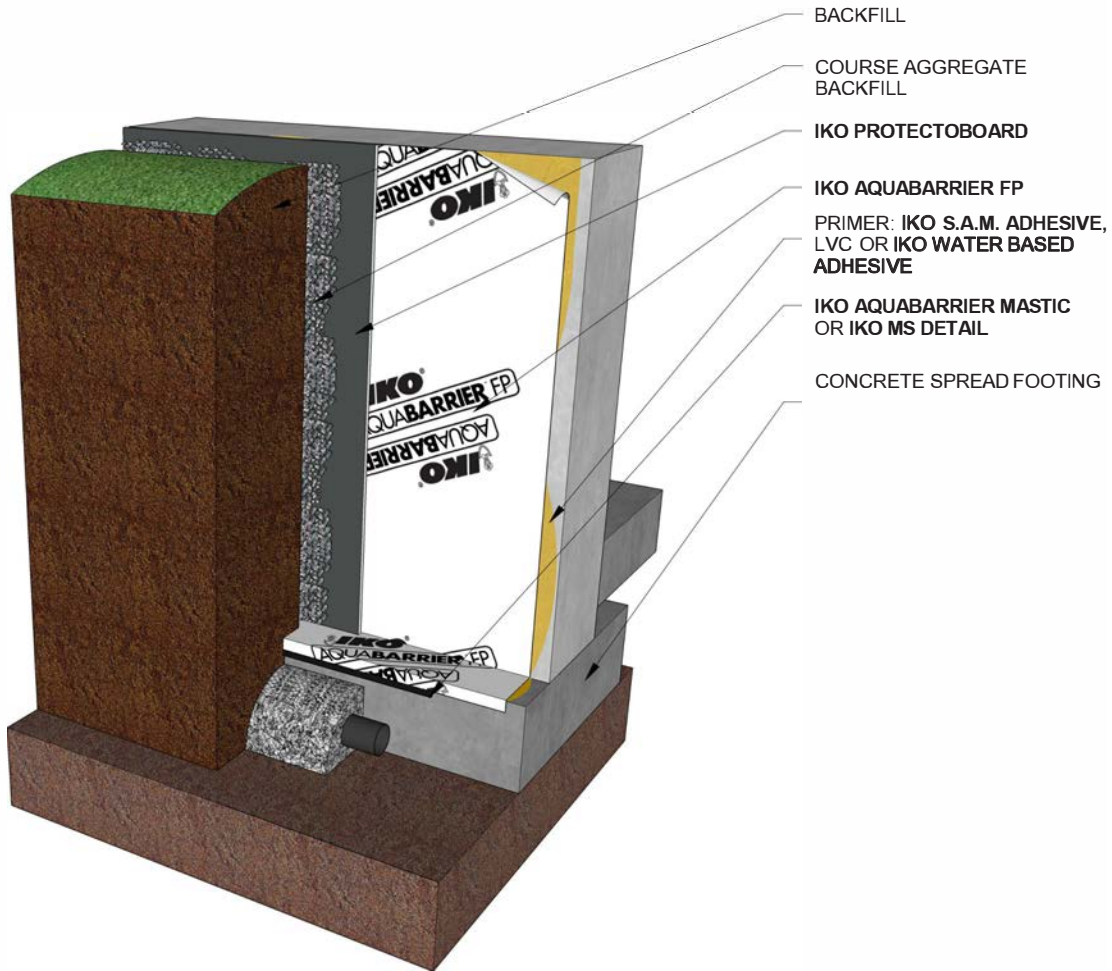


IKO AquaBarrier™ AVB — Masonry on Stud Wall Assembly

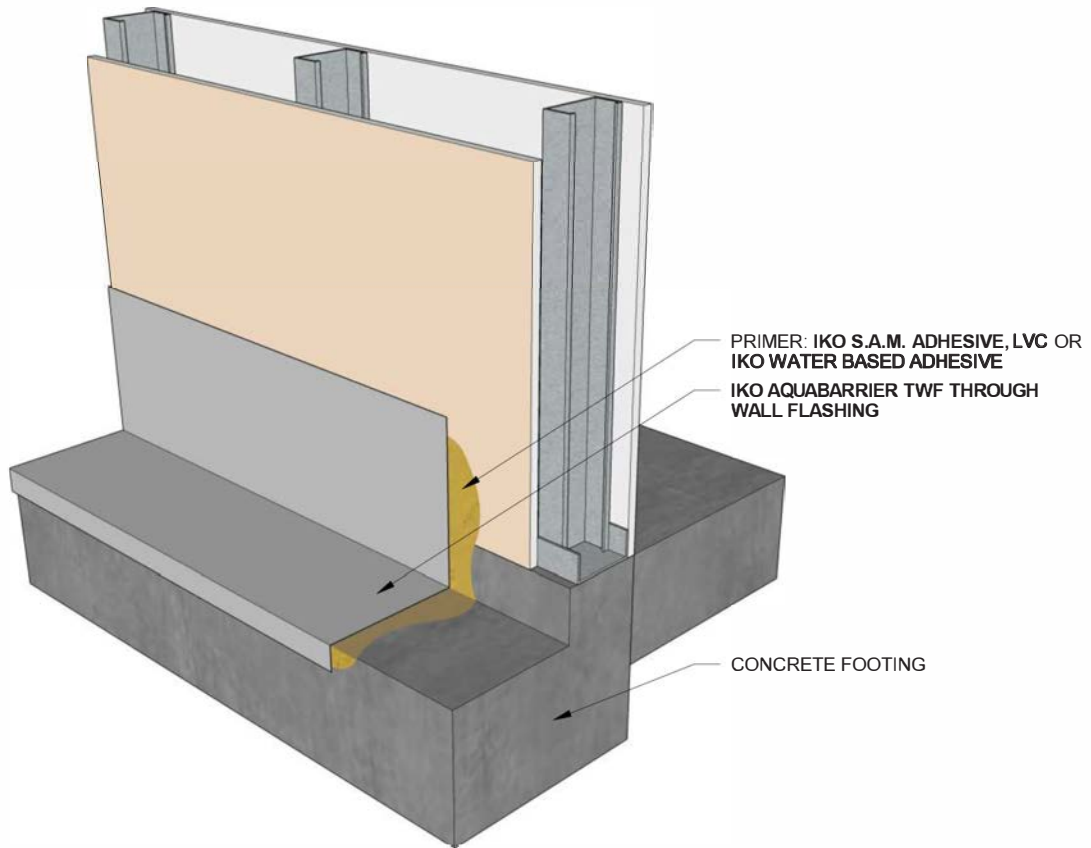




IKO AquaBarrier™ FP — Foundation Detail

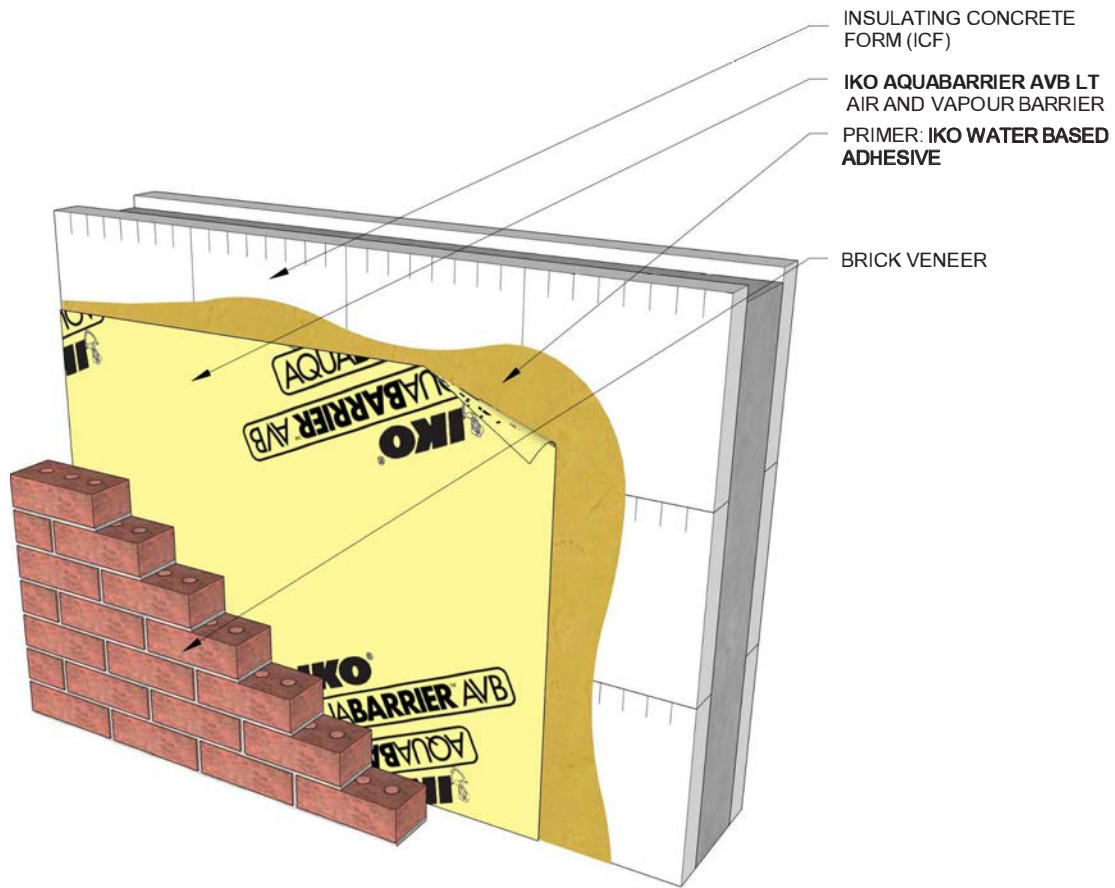


IKO AquaBarrier™ TWF — Through Wall Flashing

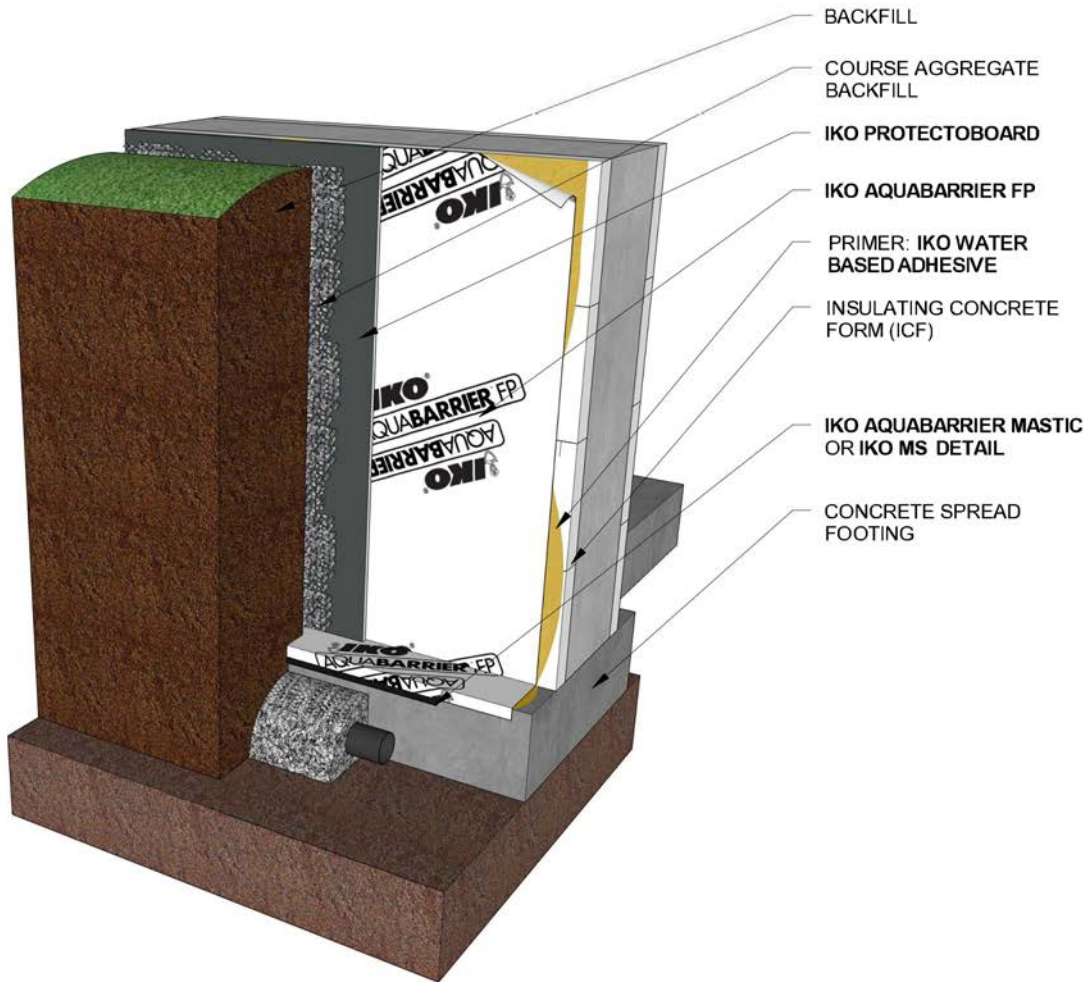




Insulated Concrete Form Wall Assembly



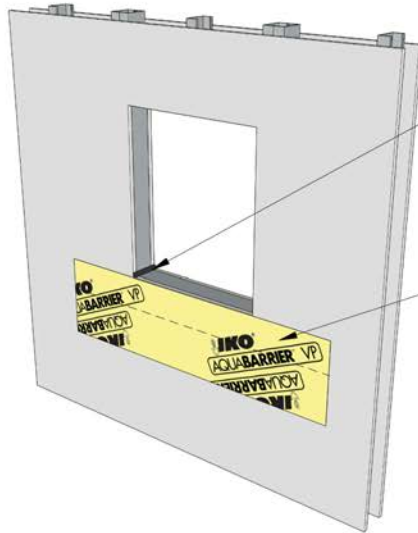
Insulated Concrete Form Foundation Detail





IKO AquaBarrier™ VP — Window Flashing Detail

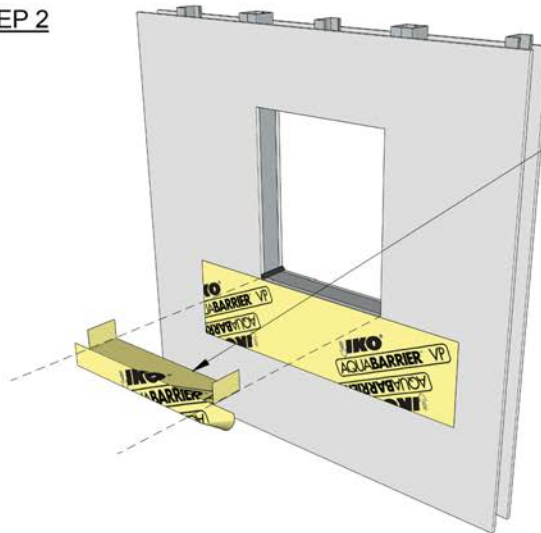
STEP 1



OPTIONAL: APPLY
CORNER GUSSETS AT
SILL

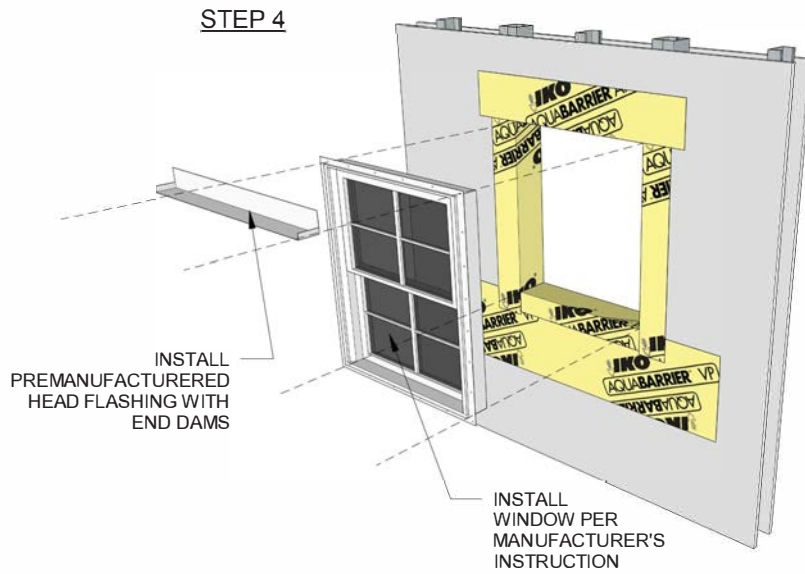
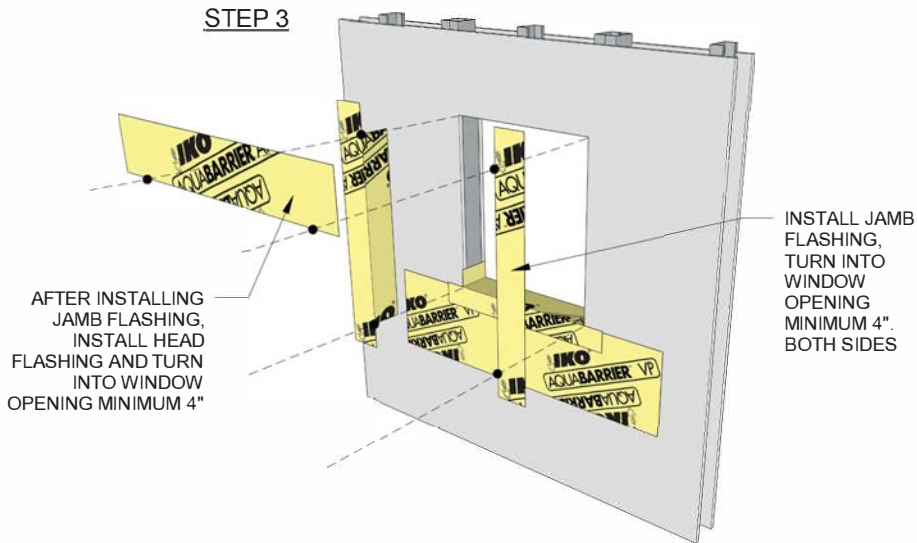
INSTALL 12" WIDE
MEMBRANE STARTER
STRIP UNDER SILL.
LEAVE BOTTOM
UNATTACHED SO THAT
FIELD MEMBRANE CAN
BE INSTALLED
UNDERNEATH

STEP 2



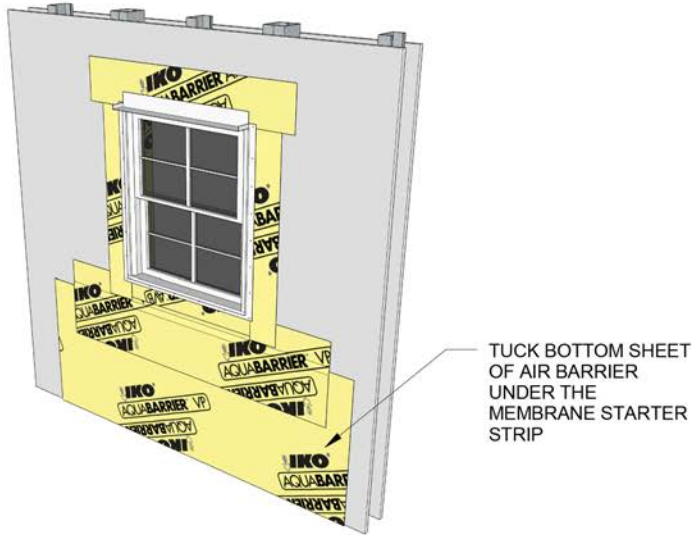
INSTALL
SINGLE PIECE
SILL PAN

IKO AquaBarrier™ VP — Window Flashing Detail

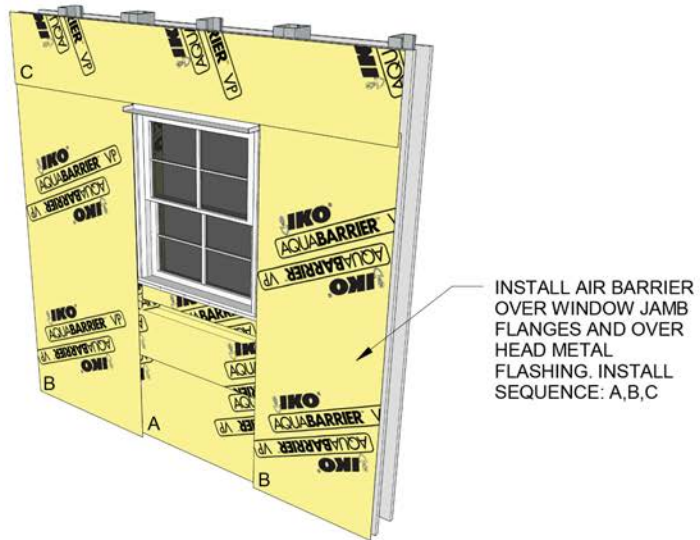


IKO AquaBarrier™ VP — Window Flashing Detail

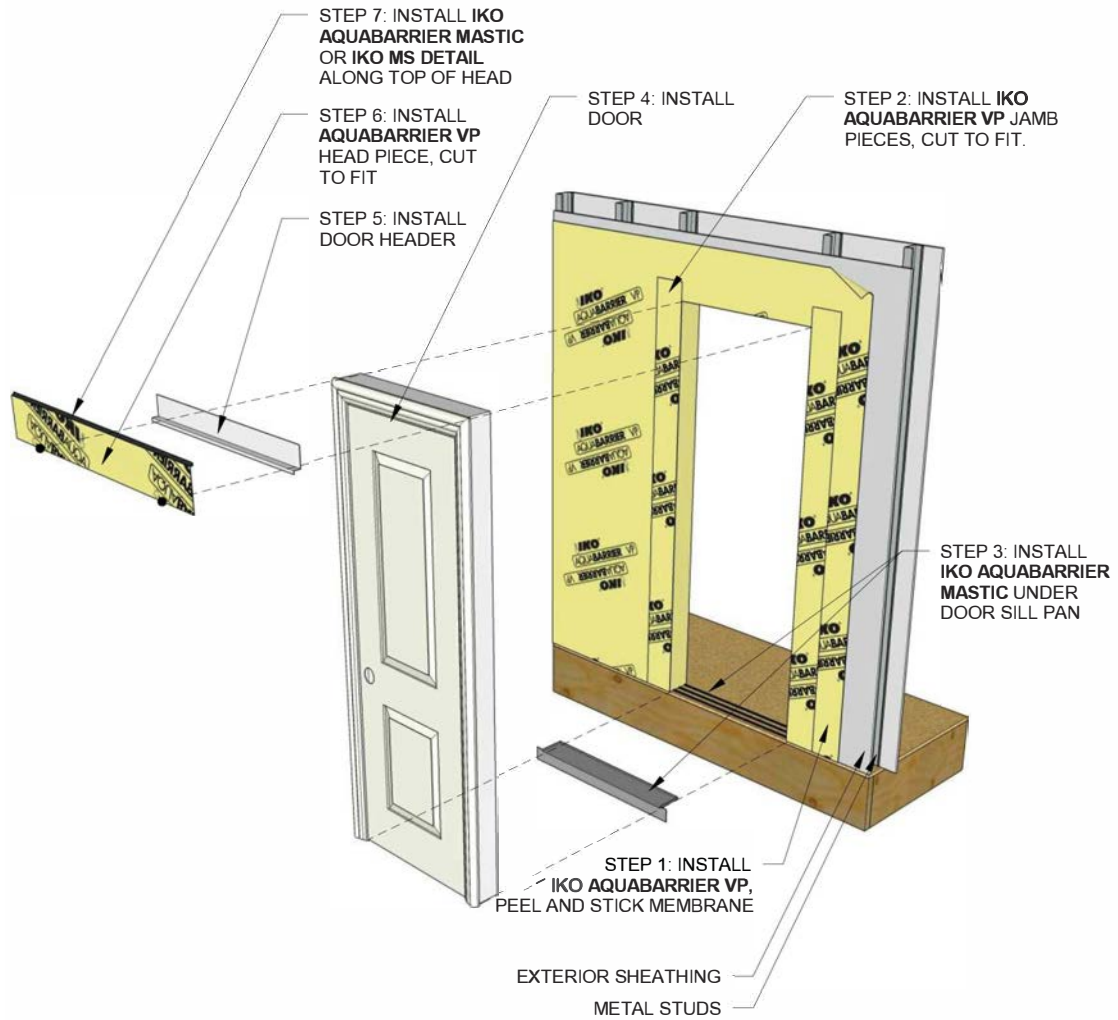
STEP 5



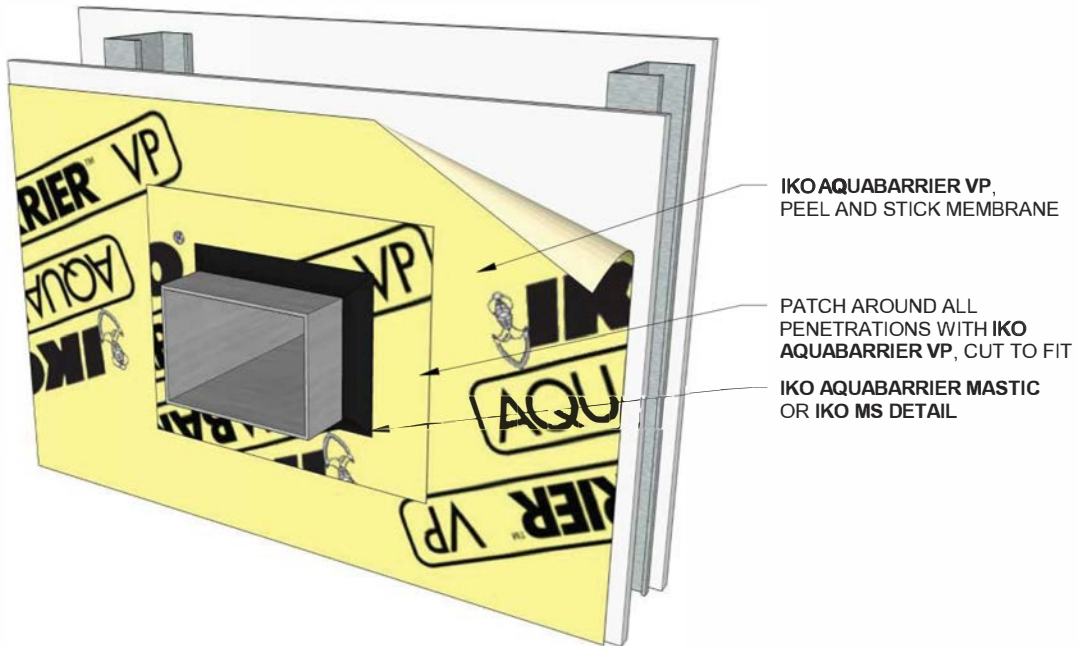
STEP 6



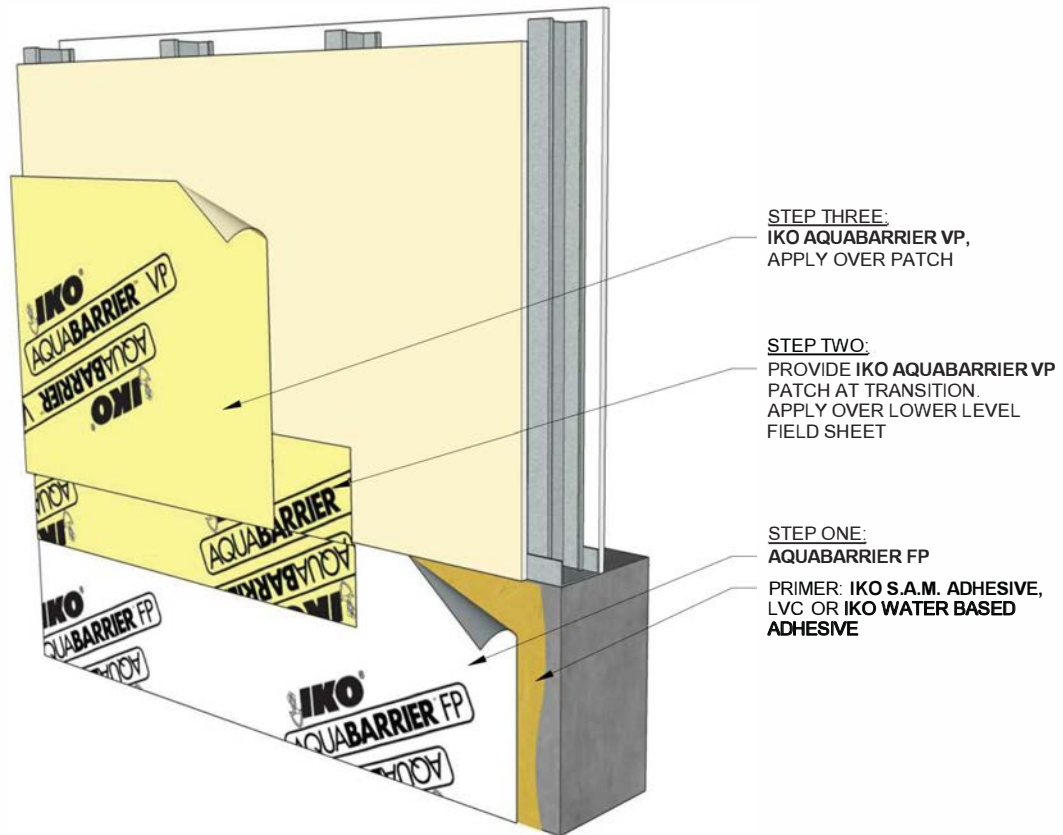
IKO AquaBarrier™ VP — Door Flashing Detail



IKO AquaBarrier™ VP — Penetration Flashing Detail

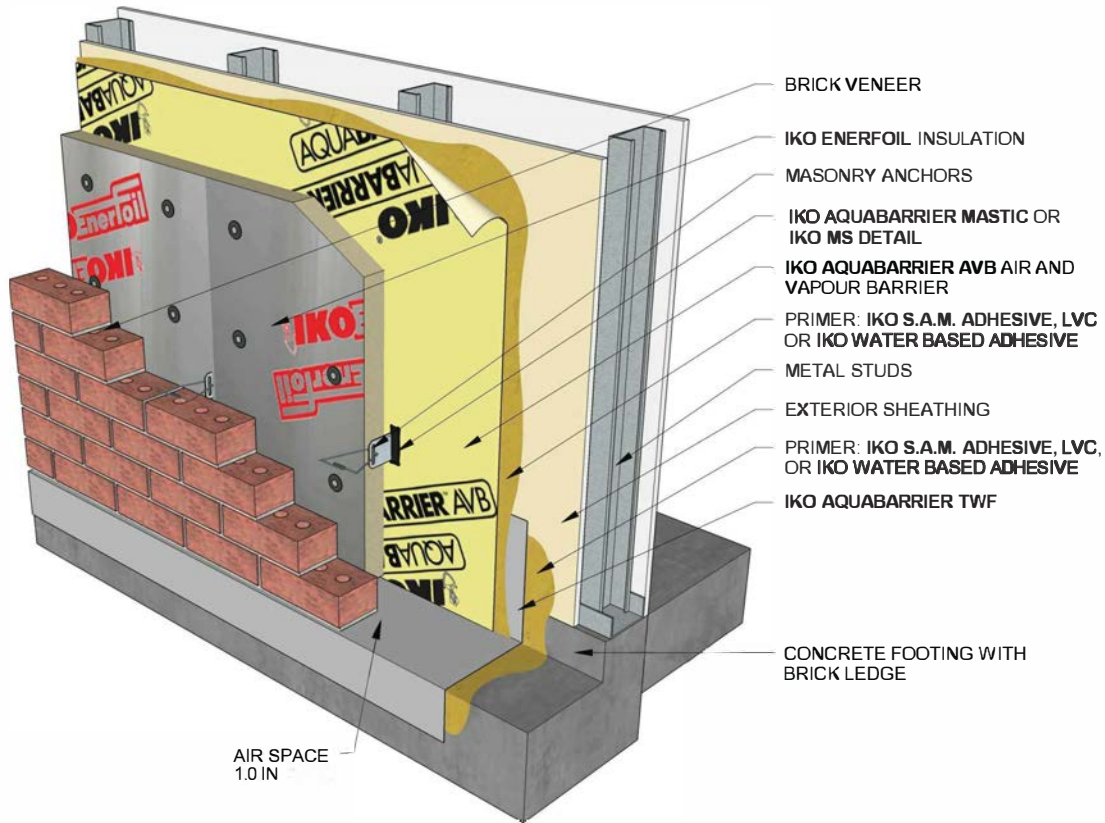


IKO AquaBarrier™ VP — Wall Transition

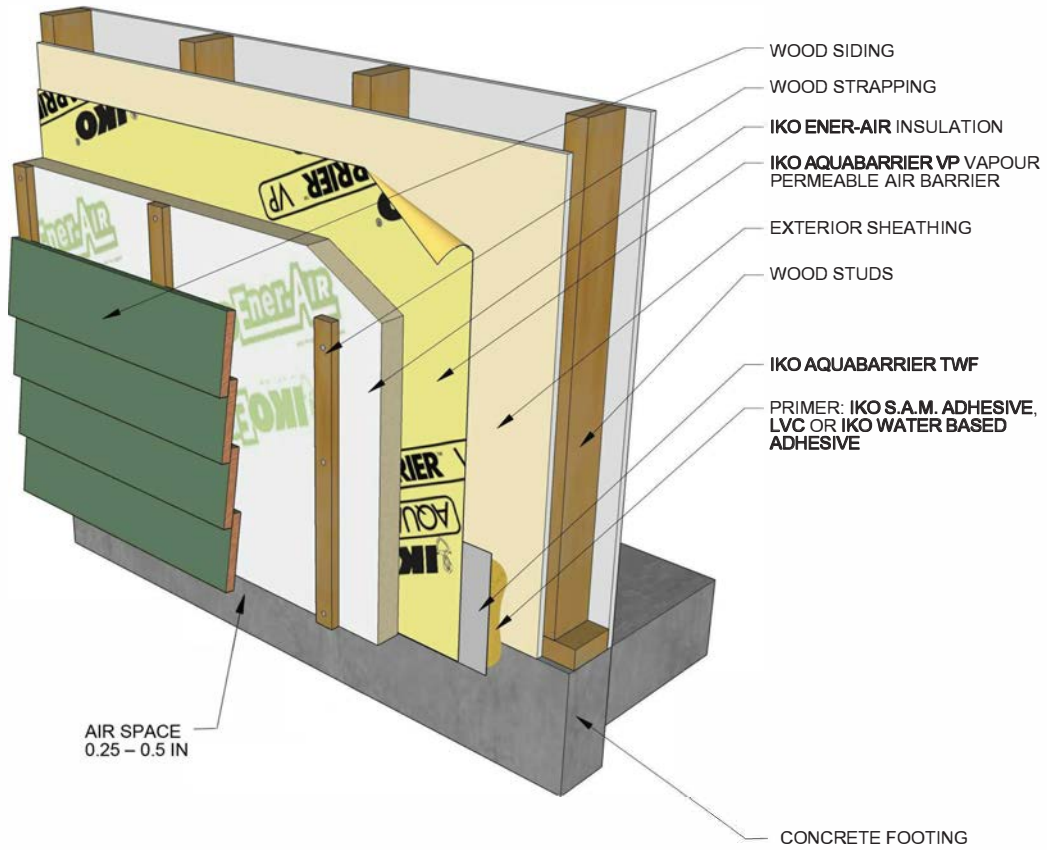




IKO Enerfoil® Detail with IKO AquaBarrier™ AVB

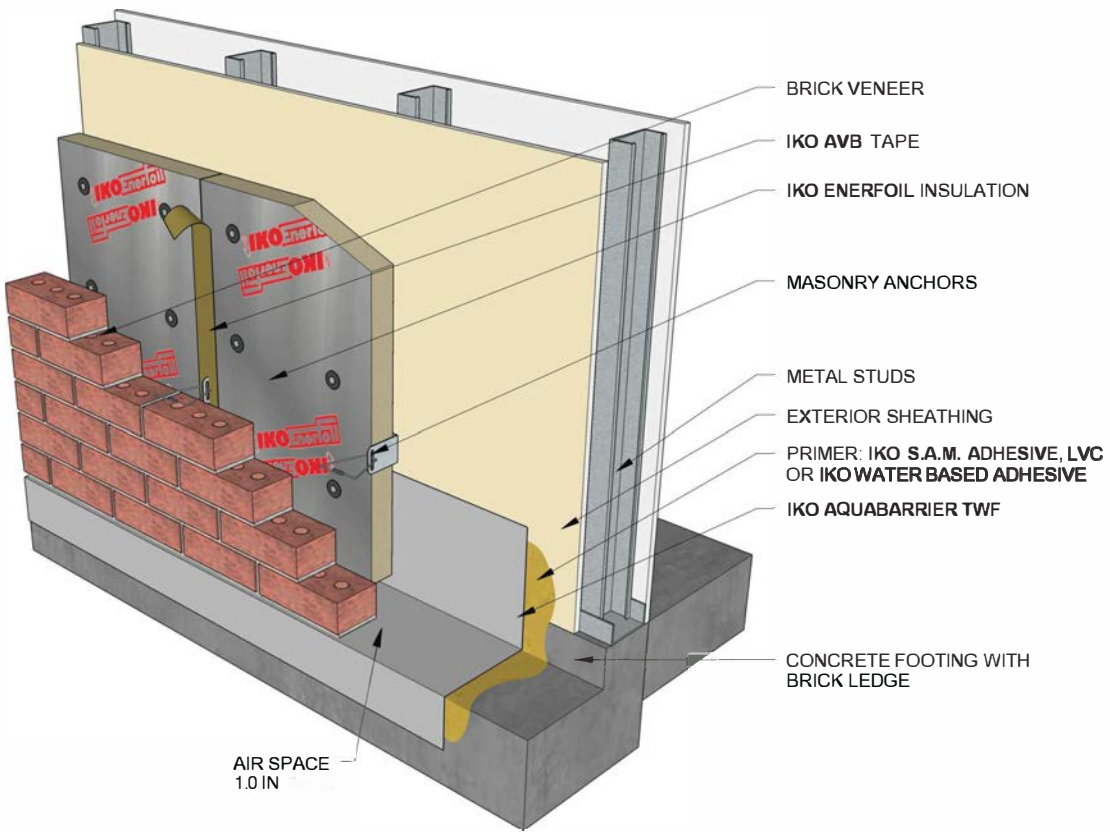


IKO Ener-Air® Detail

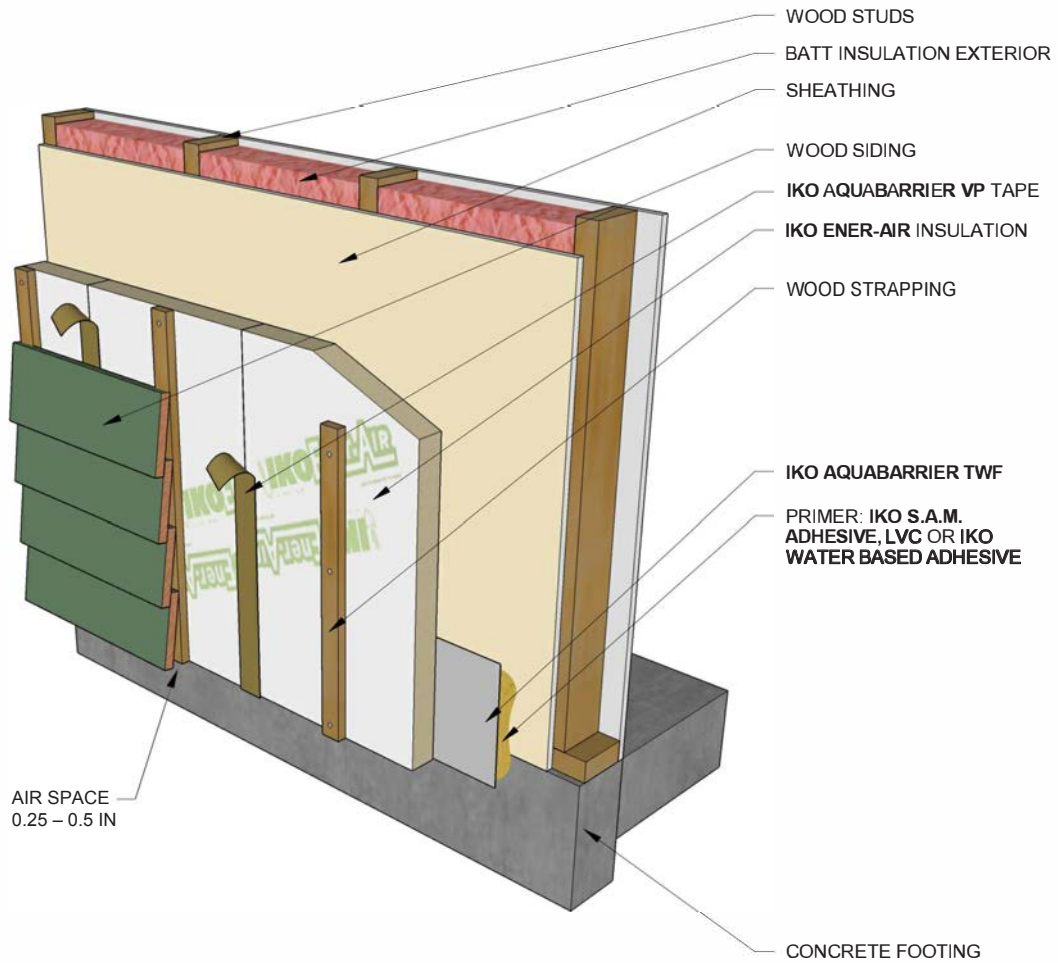




IKO Enerfoil® Detail with Seam Tape

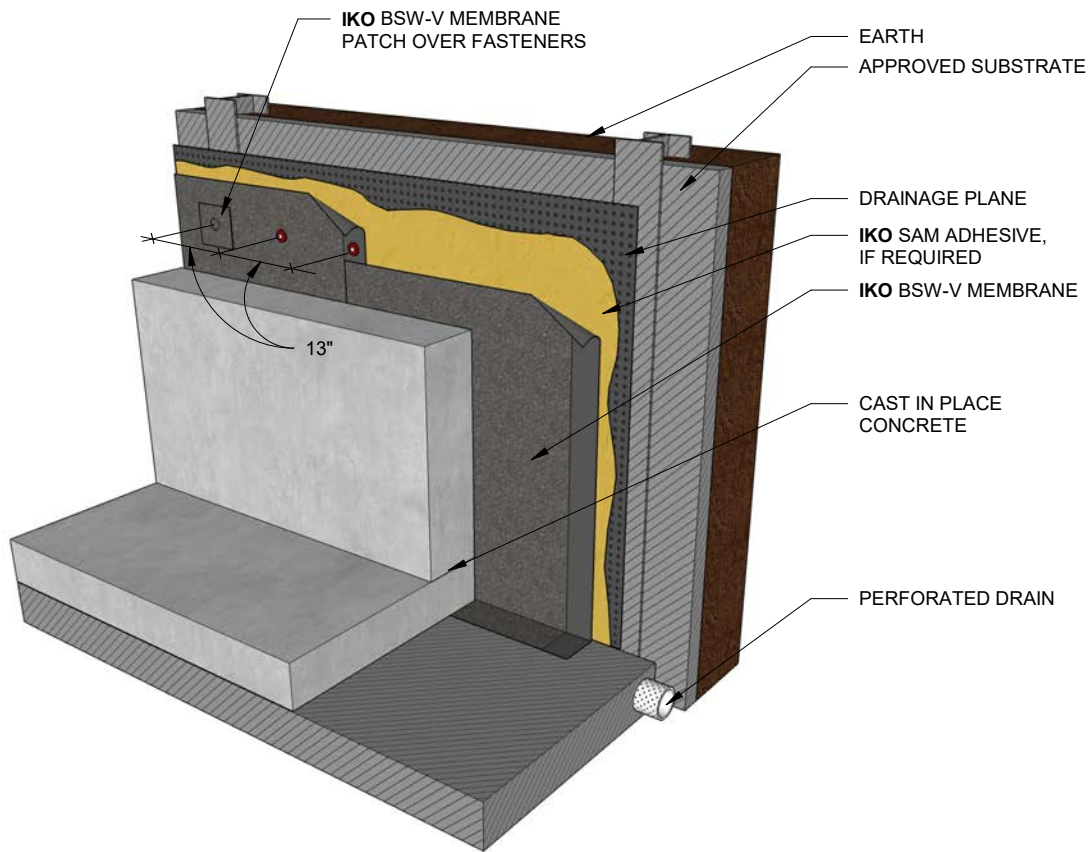


IKO Ener-Air® Detail with Seam Tape



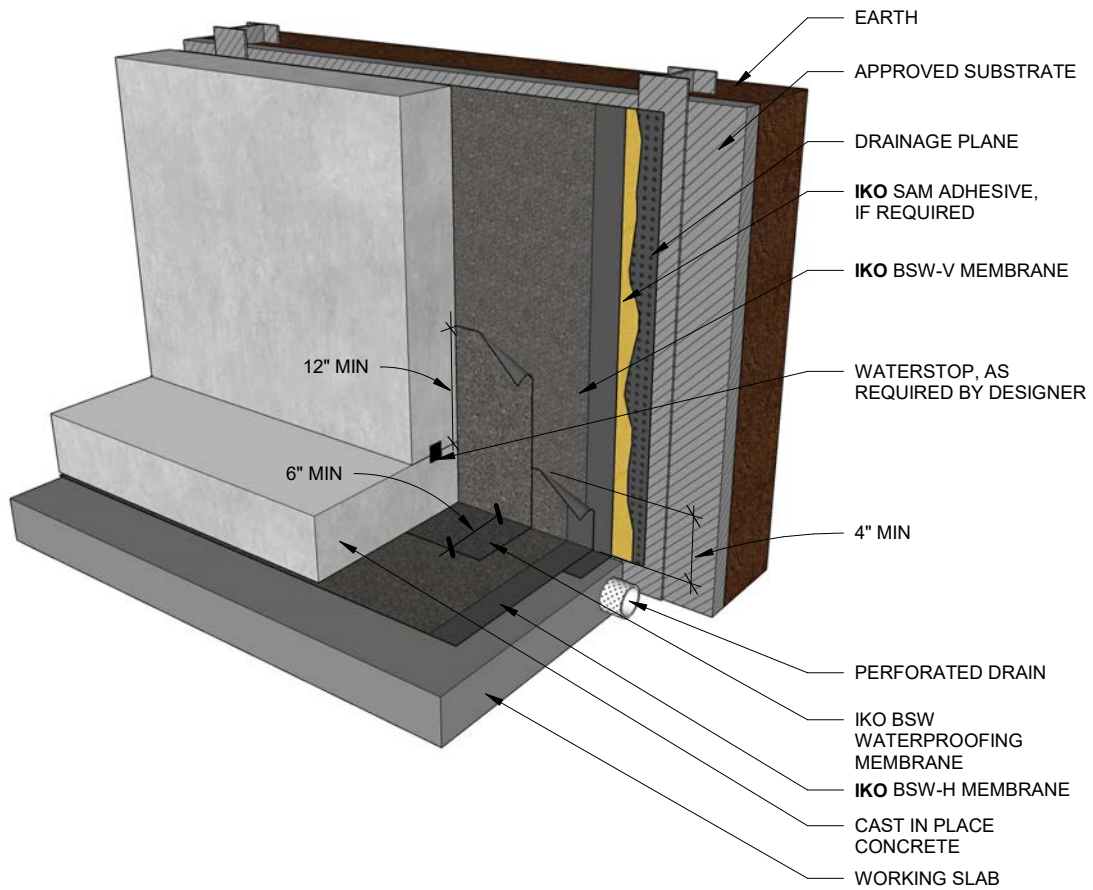


IKO Blindsight Waterproofing Typical Wall Detail



Note: Projects that are subject to high water table, hydrostatic conditions and/or other extenuating circumstances may require two plies of bsw-v for the iko limited material warranty. please refer to project design professional or your local iko representative.

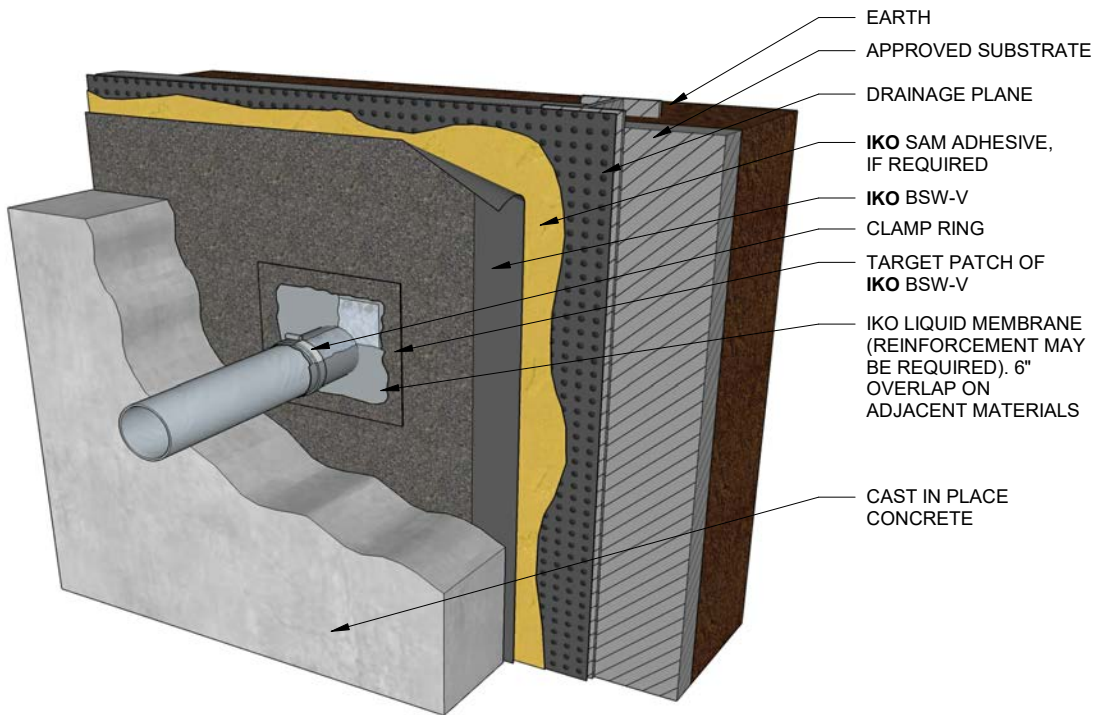
IKO Blindsight Wall Base Detail



Note: Projects that are subject to high water table, hydrostatic conditions and/or other extenuating circumstances may require two plies of BSW-V for the IKO limited material warranty. please refer to project design professional or your local IKO representative.

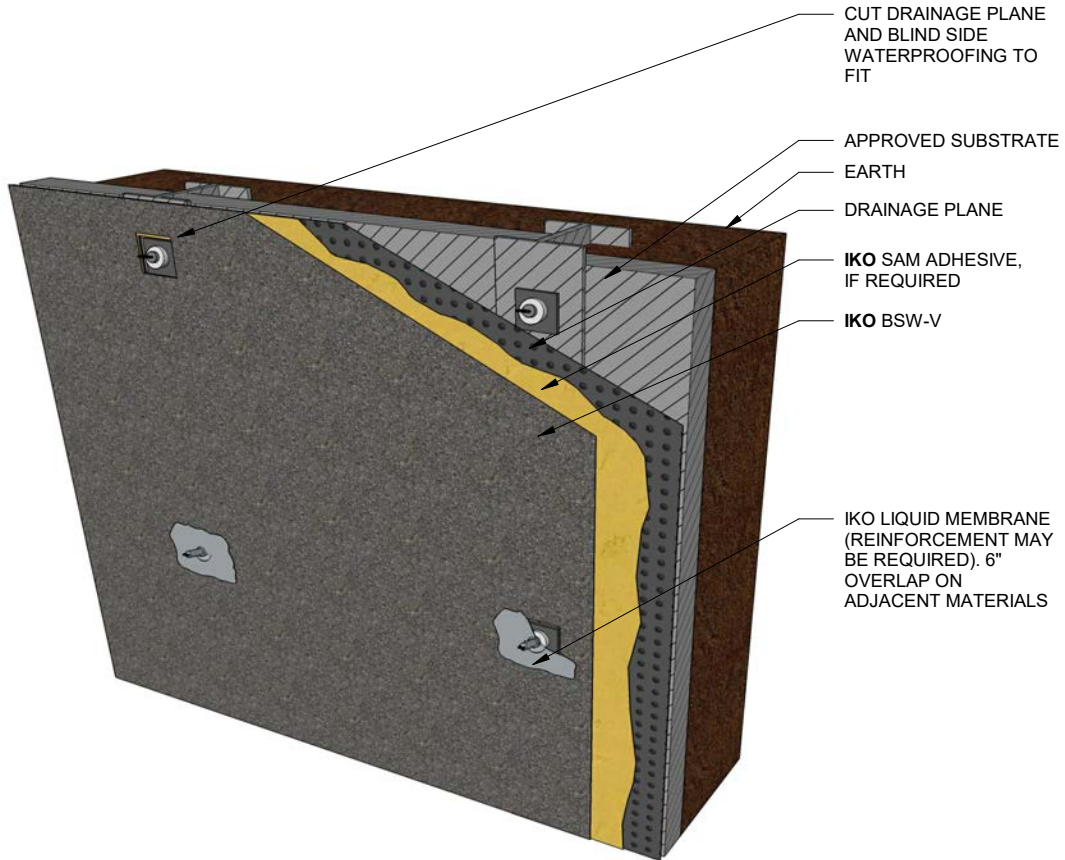


IKO Blindsight Penetration Detail



Note: Projects that are subject to high water table, hydrostatic conditions and/or other extenuating circumstances may require two plies of bsw-v for the iko limited material warranty. please refer to project design professional or your local iko representative.

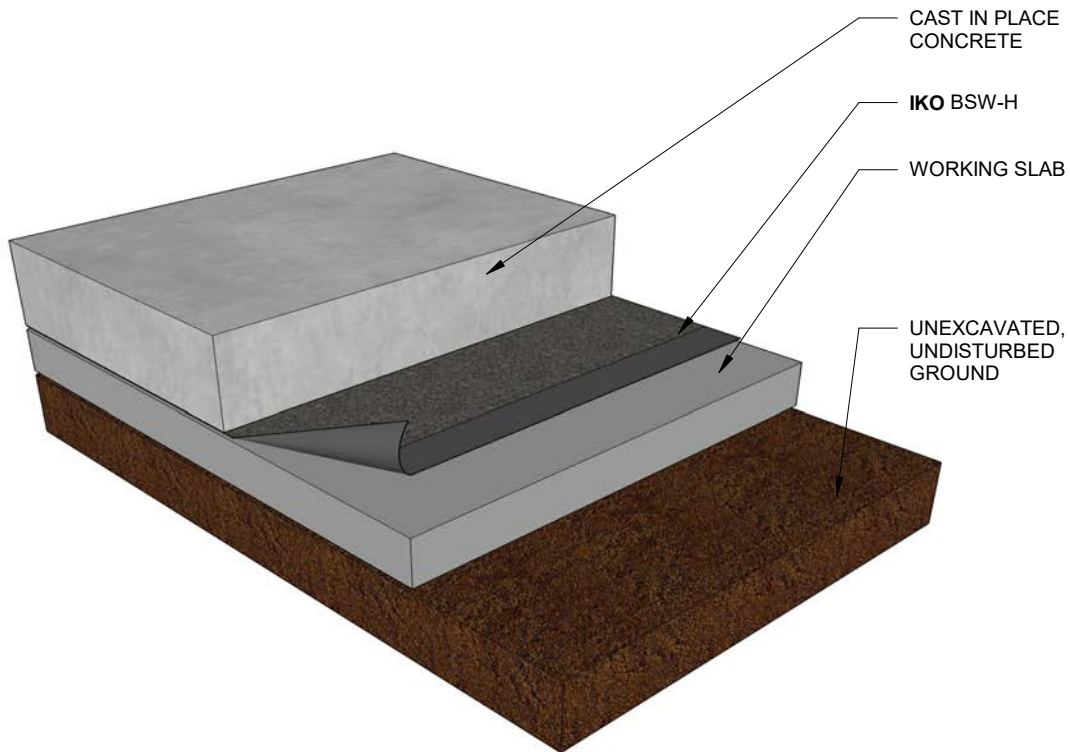
IKO Blindside Tie Back Detail



Note: Projects that are subject to high water table, hydrostatic conditions and/or other extenuating circumstances may require two plies of BSW-V for the IKO limited material warranty. please refer to project design professional or your local IKO representative.



IKO Blindsight Horizontal Typical Application

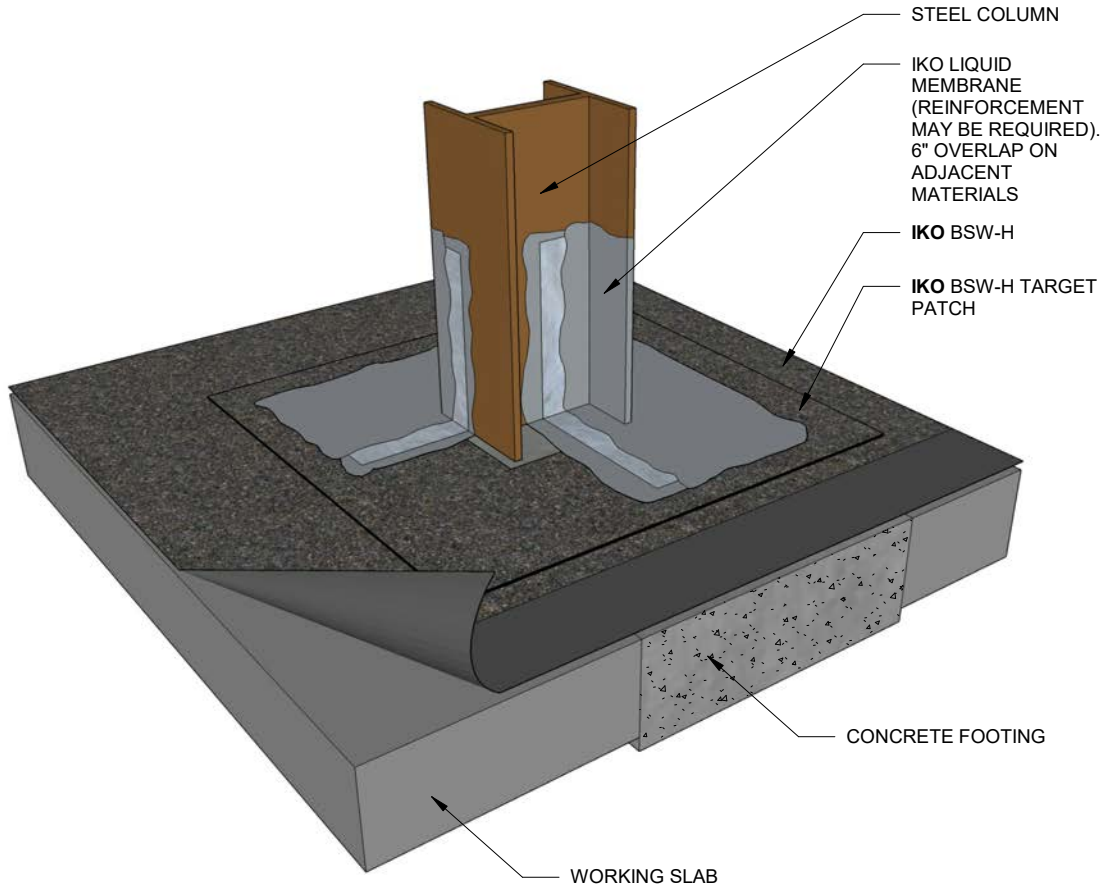


Note:

1) Projects that are subject to high water table, hydrostatic conditions and/or other extenuating circumstances may require two plies of bsw-v for the iko limited material warranty. please refer to project design professional or your local iko representative.

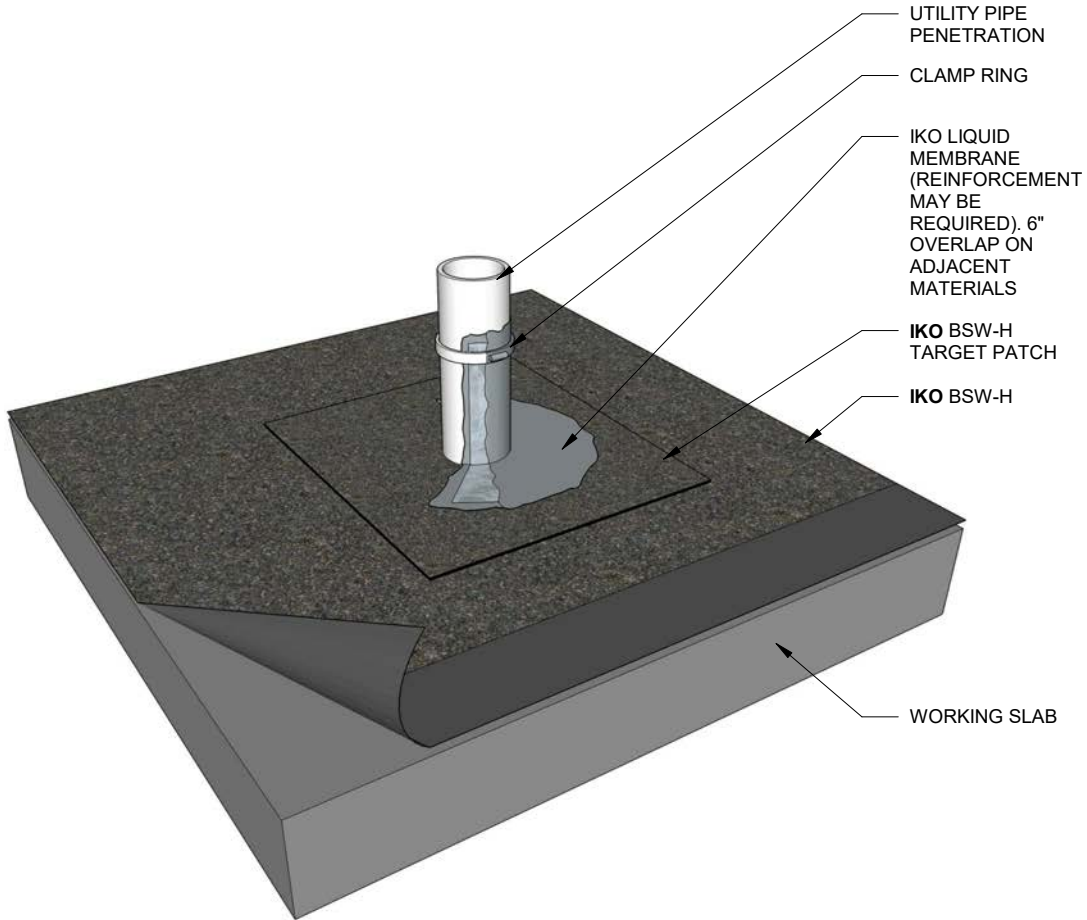
2) Minimum membrane lap distance of 12" from cold joint.

IKO Blindsight Column Penetration



Note: Projects that are subject to high water table, hydrostatic conditions and/or other extenuating circumstances may require two plies of BSW-V for the IKO limited material warranty. please refer to project design professional or your local IKO representative.

IKO Blindsight Service Pipe Penetration



Note: Projects that are subject to high water table, hydrostatic conditions and/or other extenuating circumstances may require two plies of BSW-V for the IKO limited material warranty. please refer to project design professional or your local IKO representative.