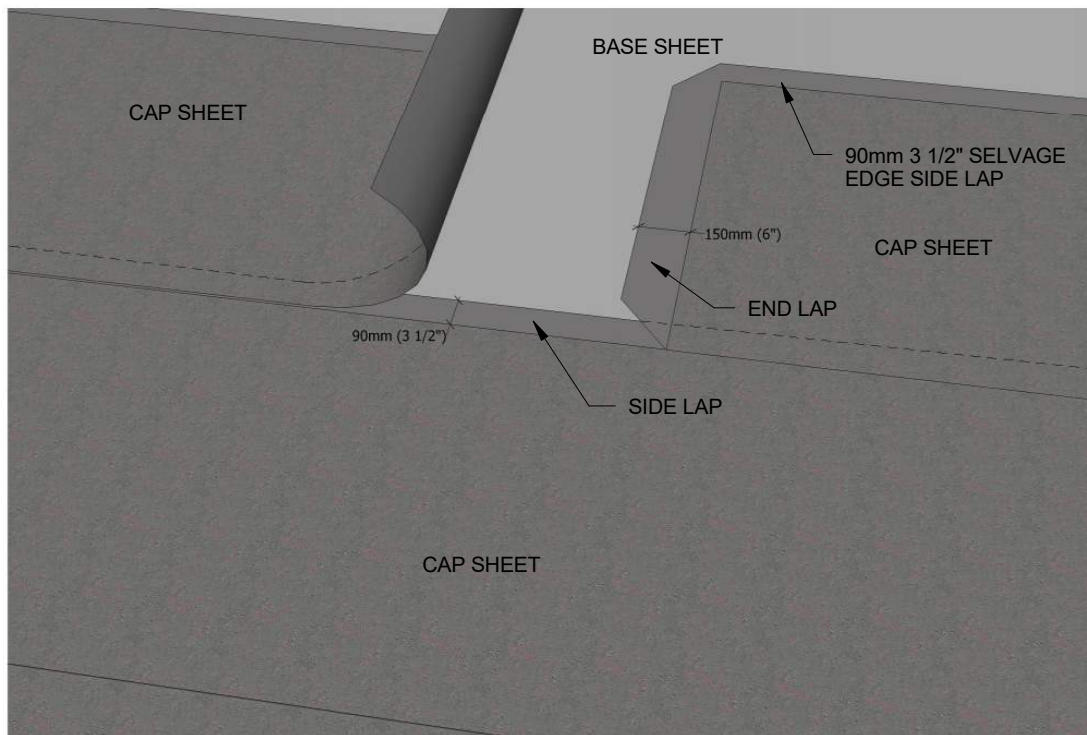


Table of Contents

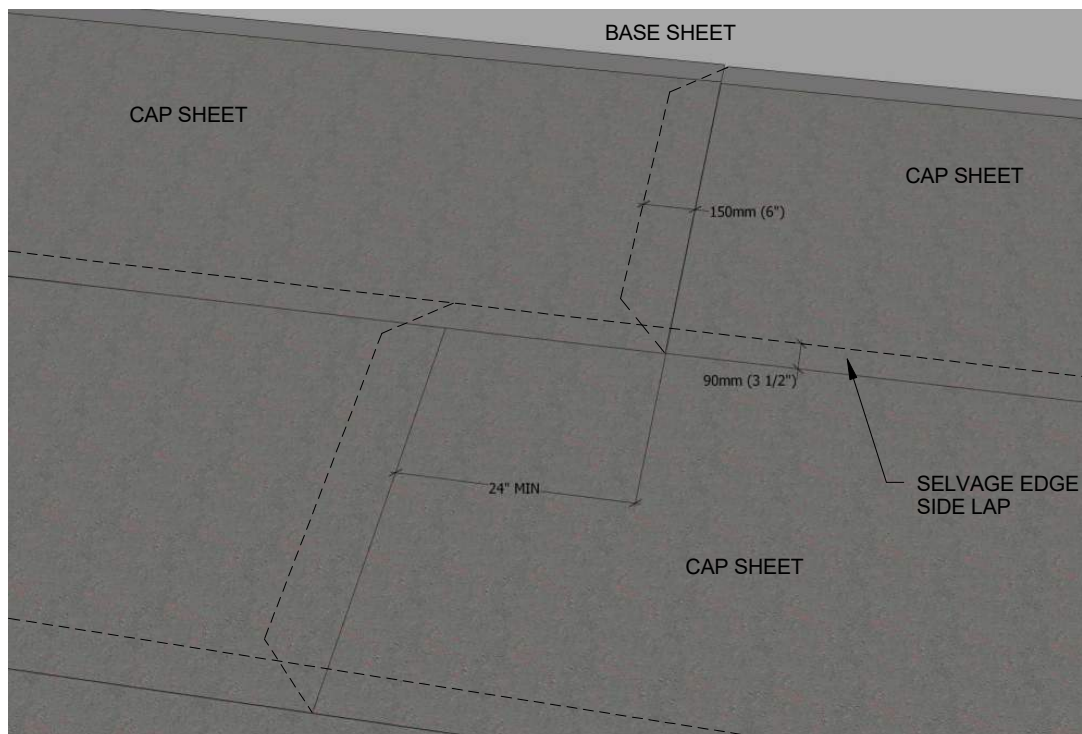
Title	Number
Angled Cut End Lap	MB-1
Staggered End End Lap	MB-2
Roof Edge with Base Flashing and Cap Sheet Flashing	MB-3
Vent Pipe Flashing	MB-4
Support Column Flashing	MB-5
Parapet/Curb Flashing on All Substrates	MB-6
Shingle Roof Tie-In	MB-7
Reglet Mounted Counter Flashing	MB-8
Surface Mounted Counter Flashing	MB-9
Masonry Coping	MB-10
Metal Coping (24" Max. Parapet Height)	MB-11
Through Wall Scupper	MB-12
Downspout Scupper Box	MB-13
Cast Iron Roof Drain	MB-14
Raised Expansion Joint	MB-15
Roof Level Expansion Joint	MB-16
Wall Expansion Joint	MB-17
HVAC Unit	MB-18
Built-Up Roof Tie-In New Roof at Same Level	MB-19
Built-Up Roof Tie-In with Tapered Edge	MB-20
New Pitch Pan with Single Section Flashing	MB-21
Support Sleeper	MB-22
Outside Corner	MB-23
Inside Corner without Cant Strip	MB-24
Armourbond Flashing Inside Corner Option 1	MB-25A – MB-25B
Armourbond Flashing Inside Corner Option 2	MB-26A – MB-26B
Termination Bar	MB-27
Base Sheet Perimeter Attachment – Horizontal	MB-28
Base Sheet Perimeter Attachment – Vertical	MB-29
Base Sheet Perimeter Attachment – Angle	MB-30
Protectobase at Parapet Detail	MB-31
Protectobase Pre-Strip at Vertical	MB-32
Perimeter Flame Free	FF-1
Perimeter Flame Free – Low Temperature	FF-2

Angled Cut End Lap

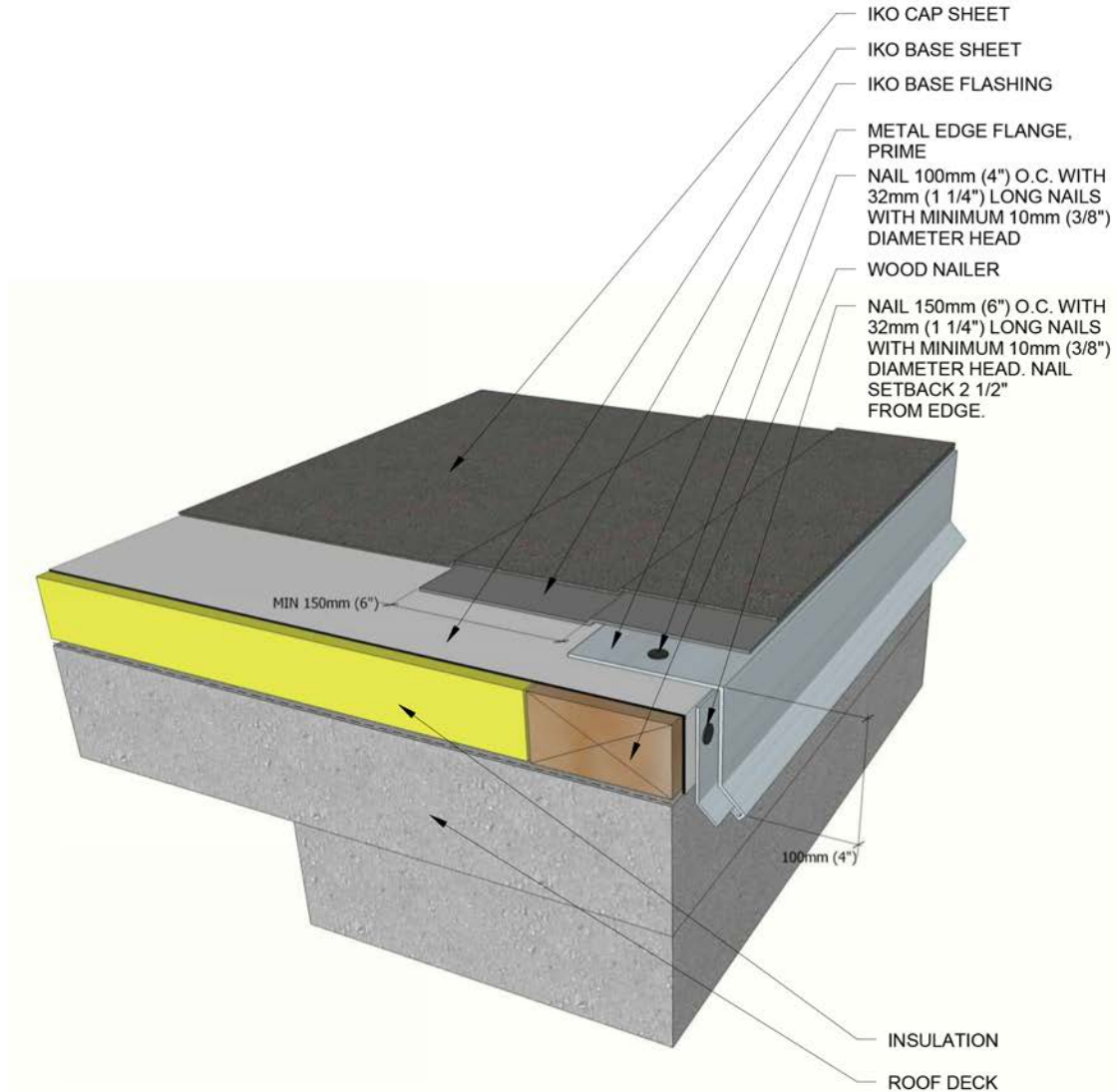




Staggered End End Lap

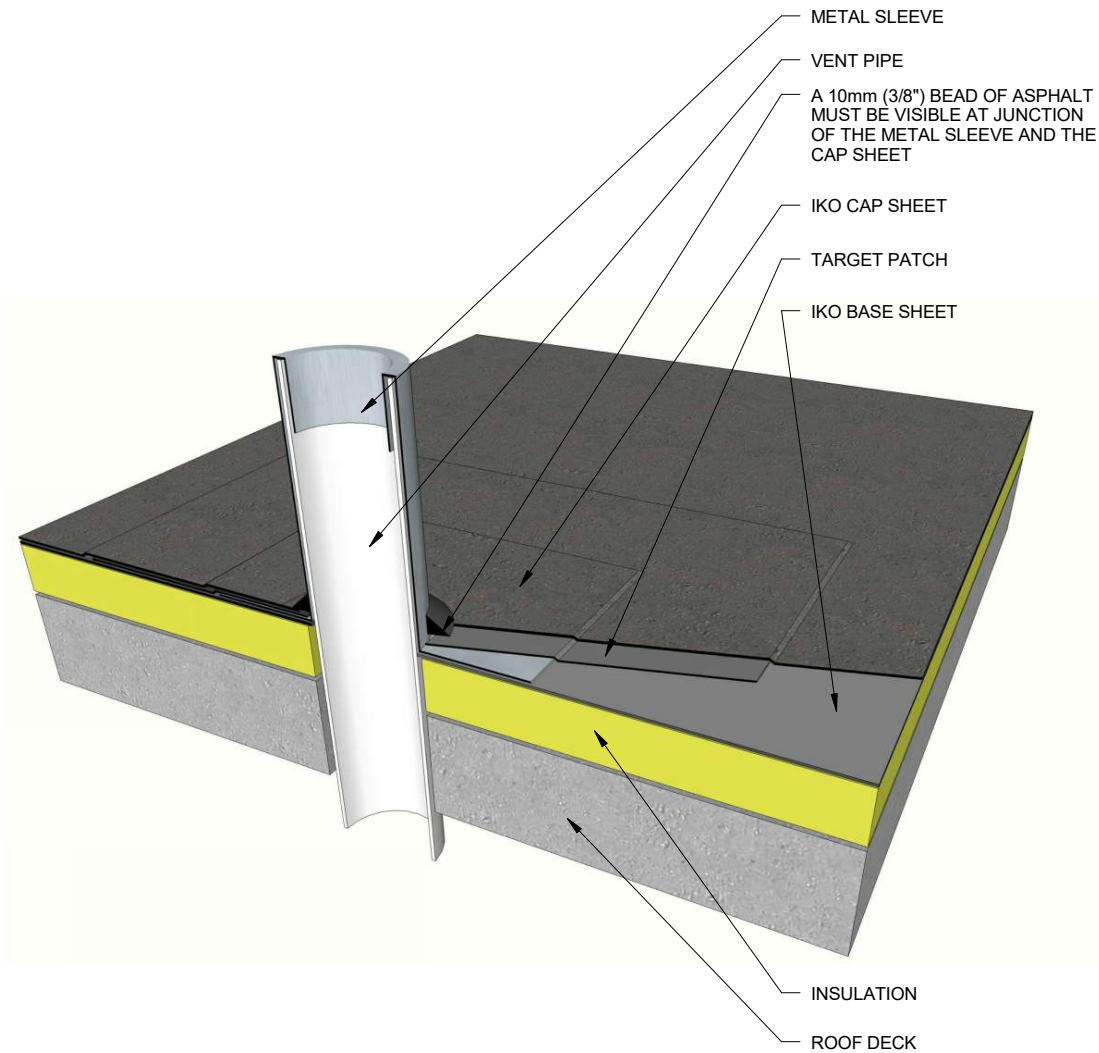


Roof Edge with Base Flashing and Cap Sheet Flashing

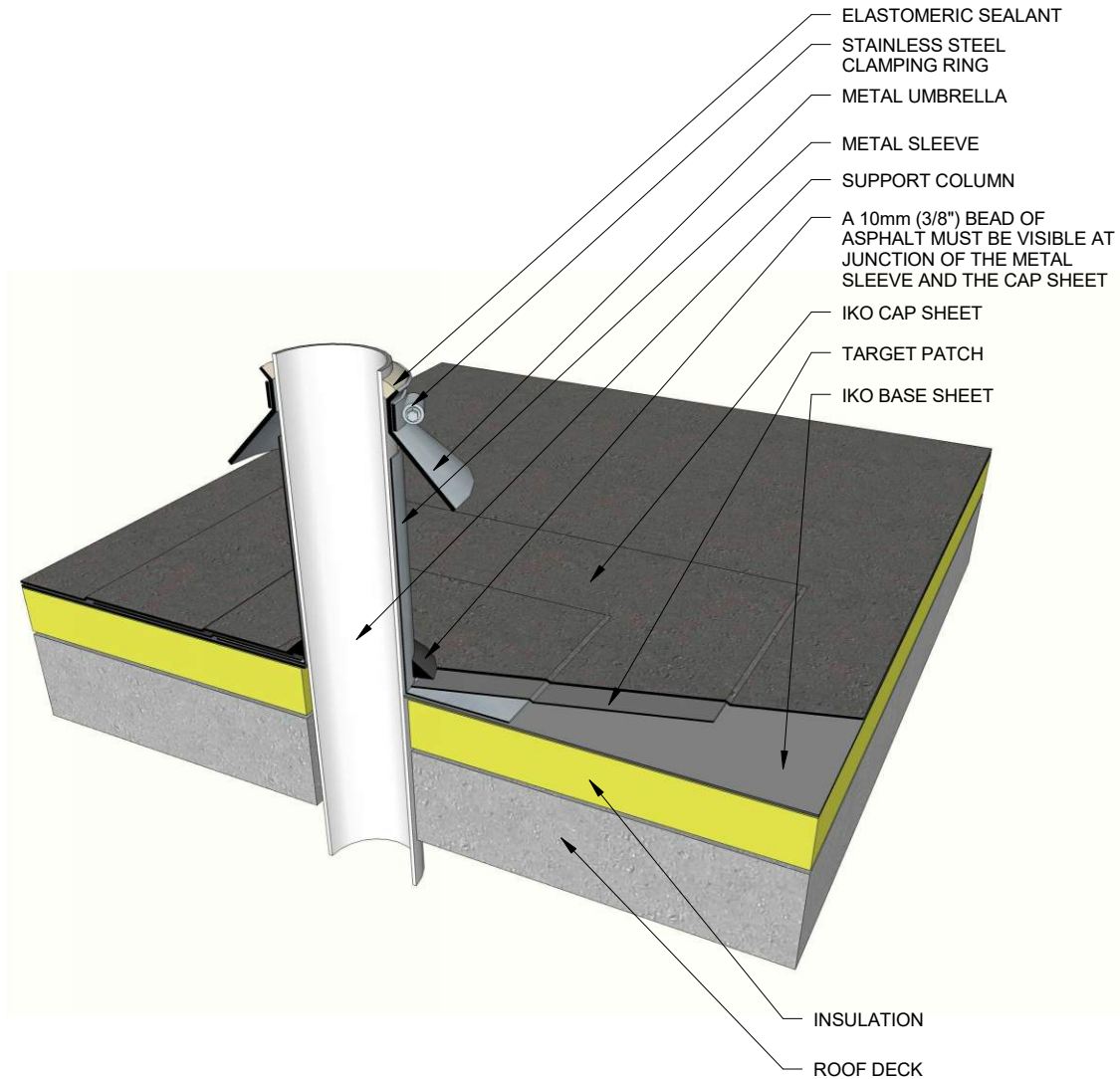


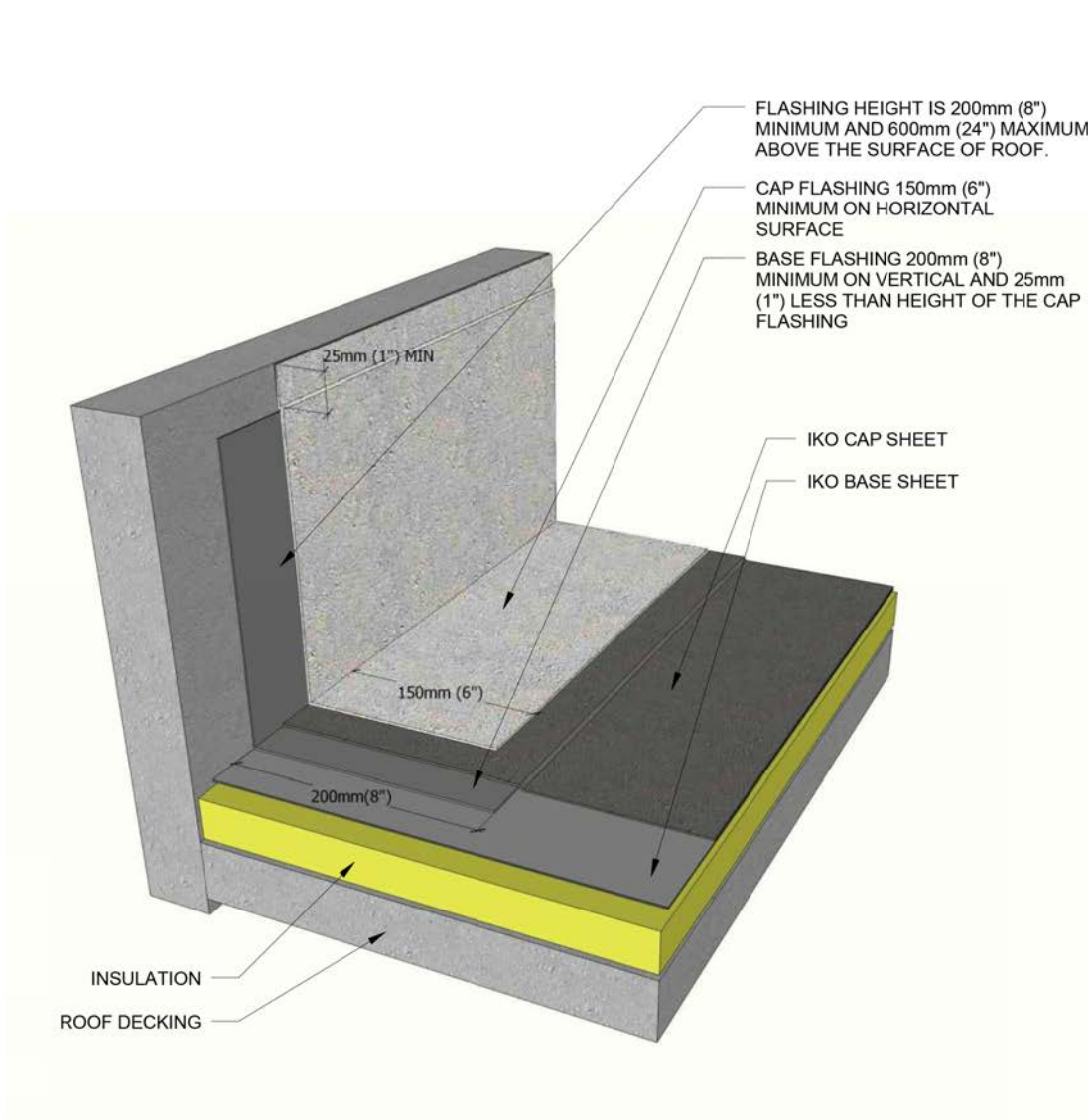


Vent Pipe Flashing

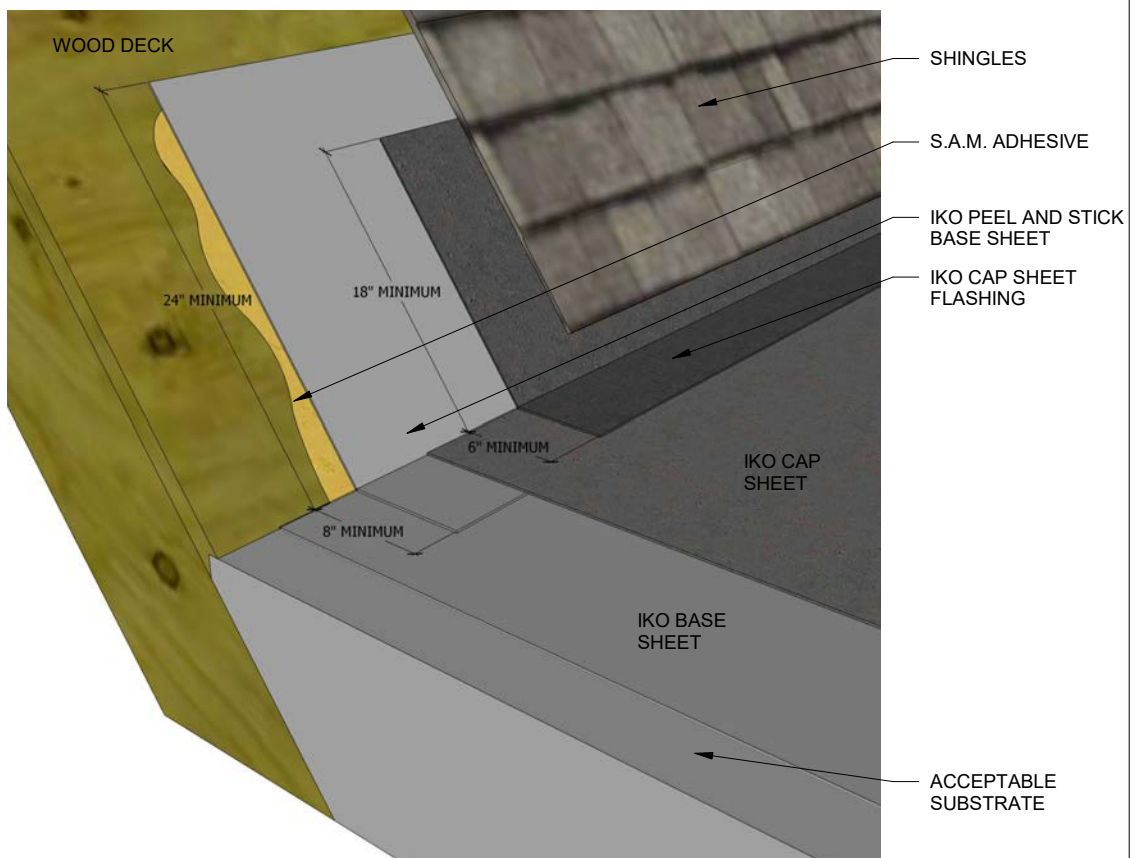


Support Column Flashing



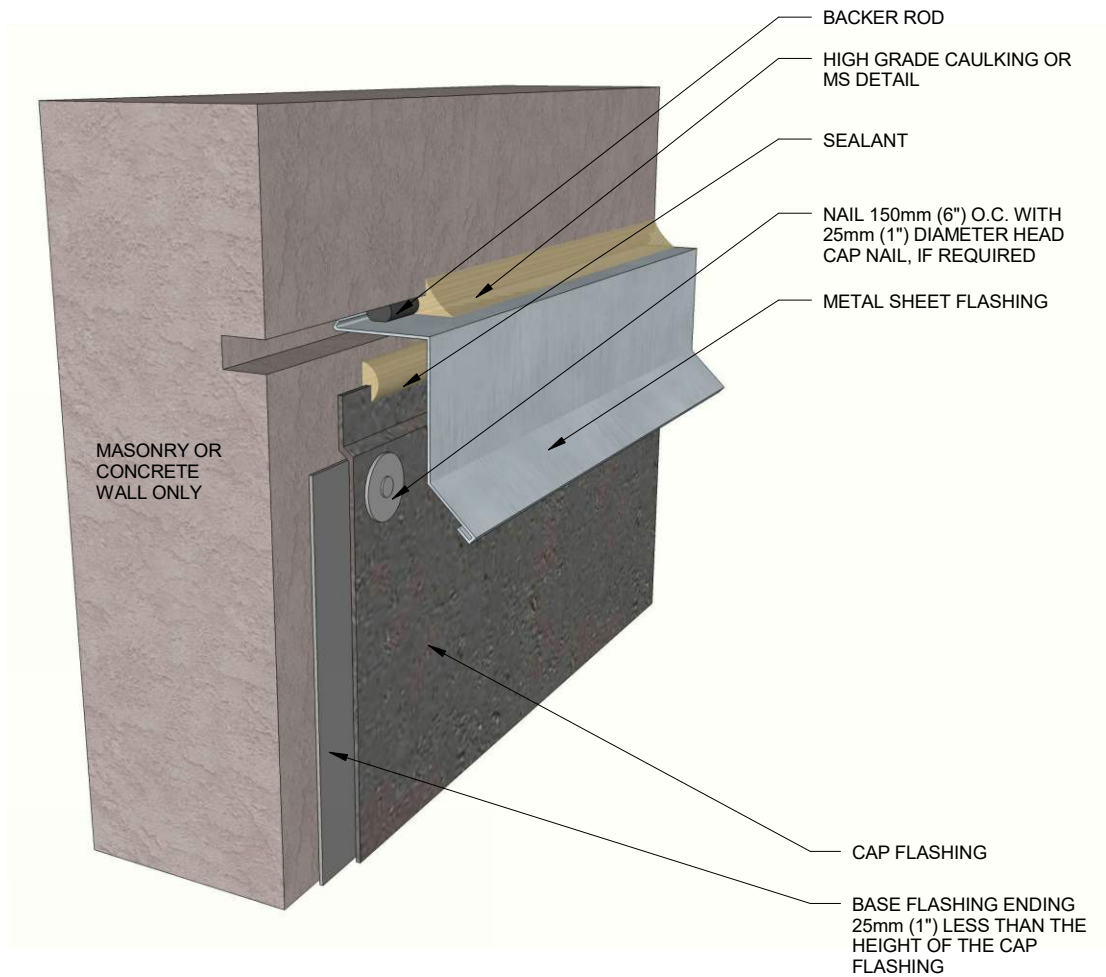
**Parapet/Curb Flashing on All Substrates**

Shingle Roof Tie-In

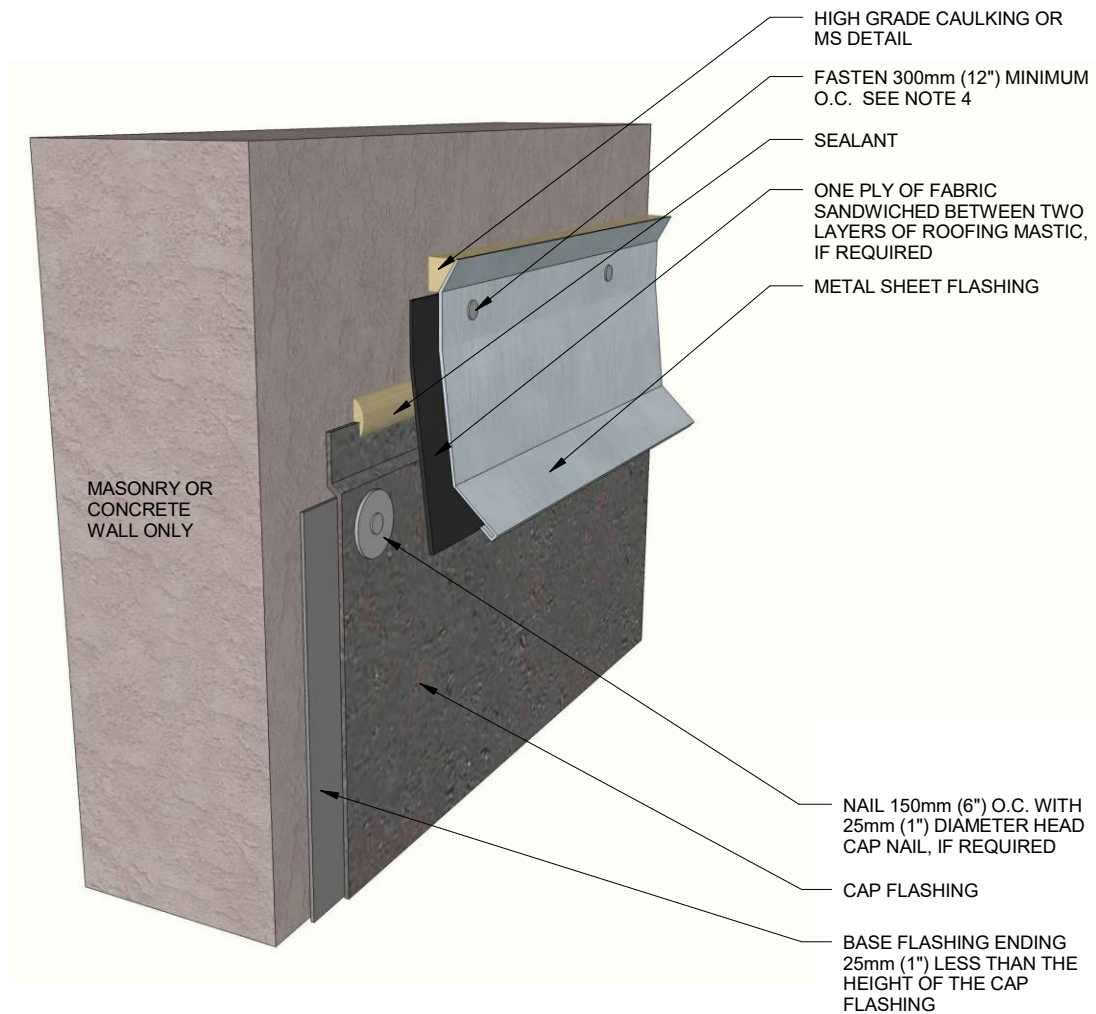




Reglet Mounted Counterflashing

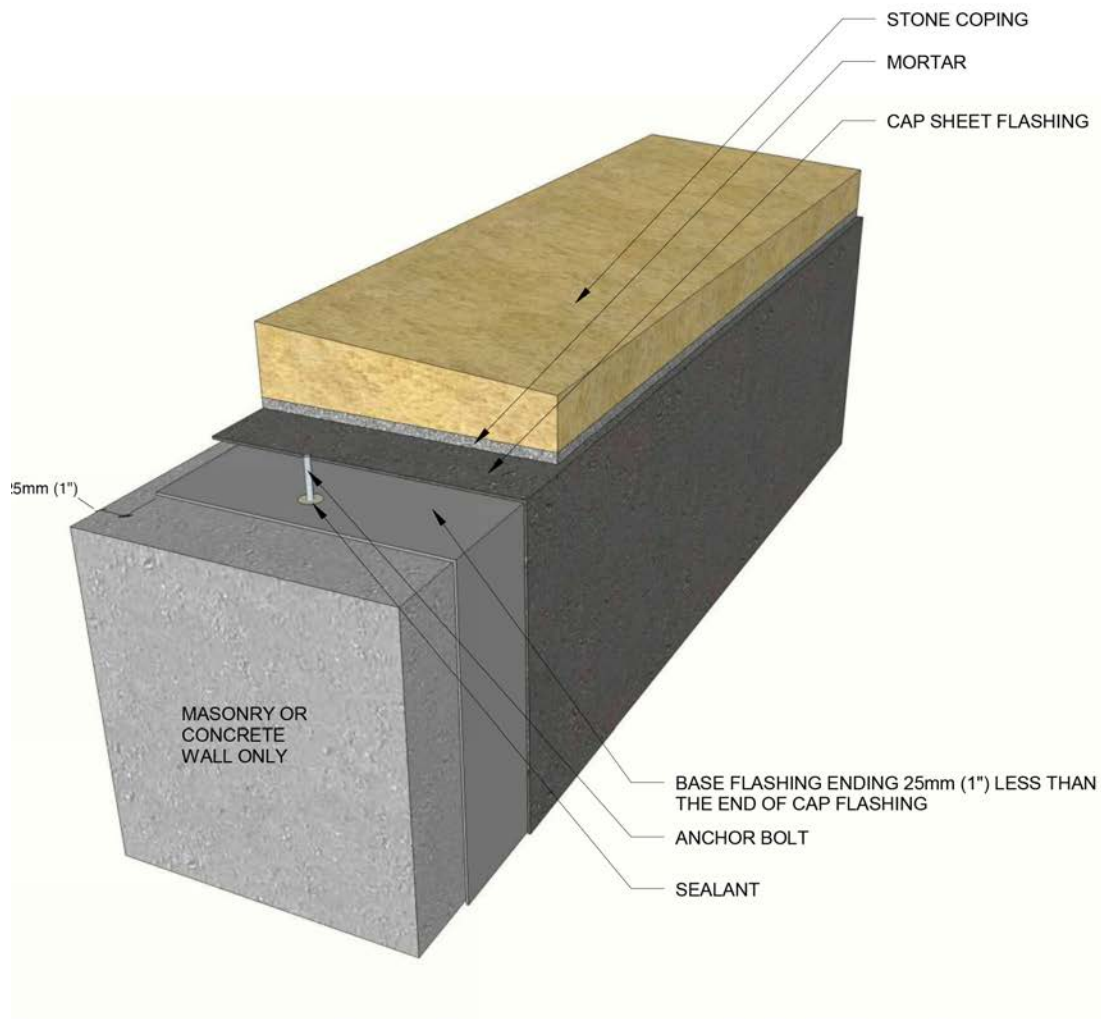


Surface Mounted Counterflashing

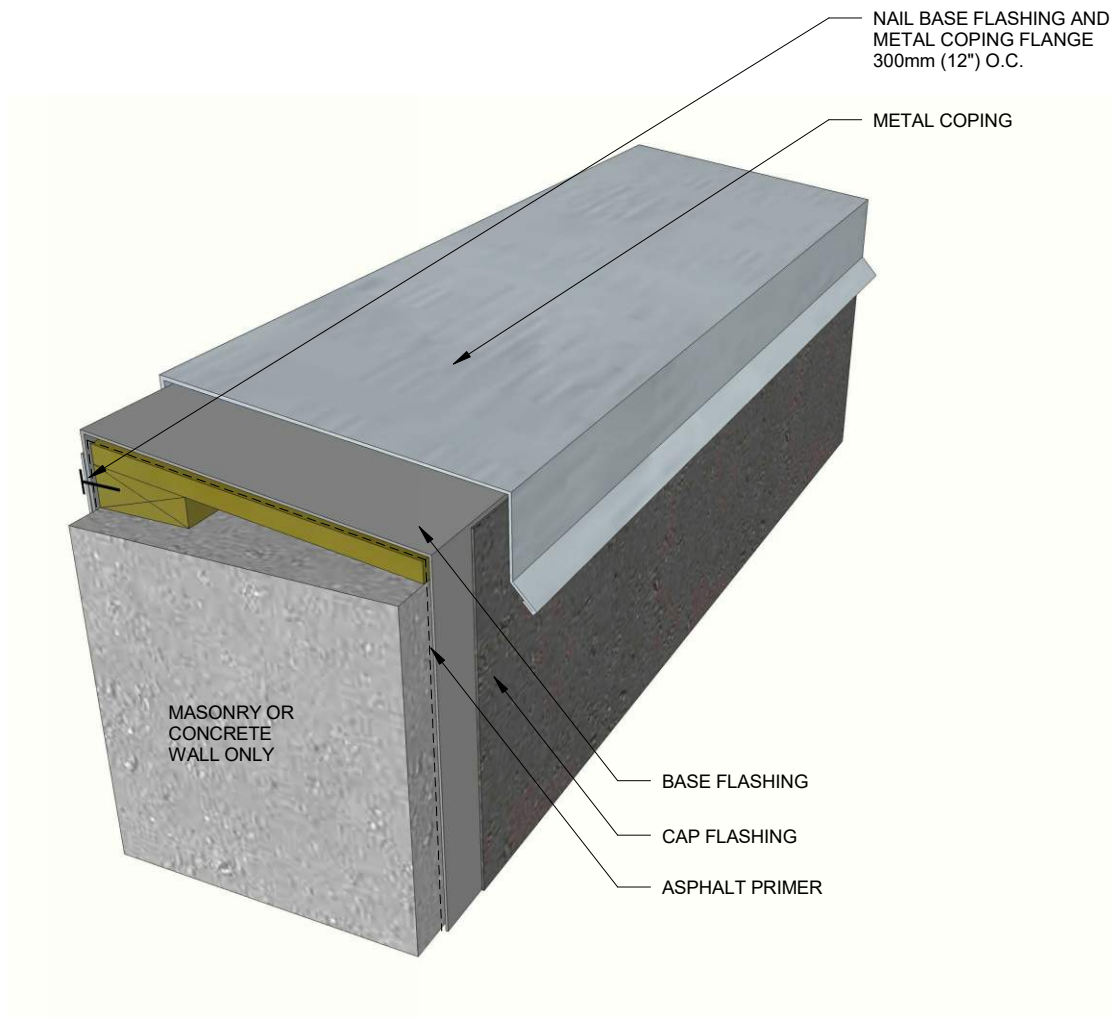




Masonry Coping

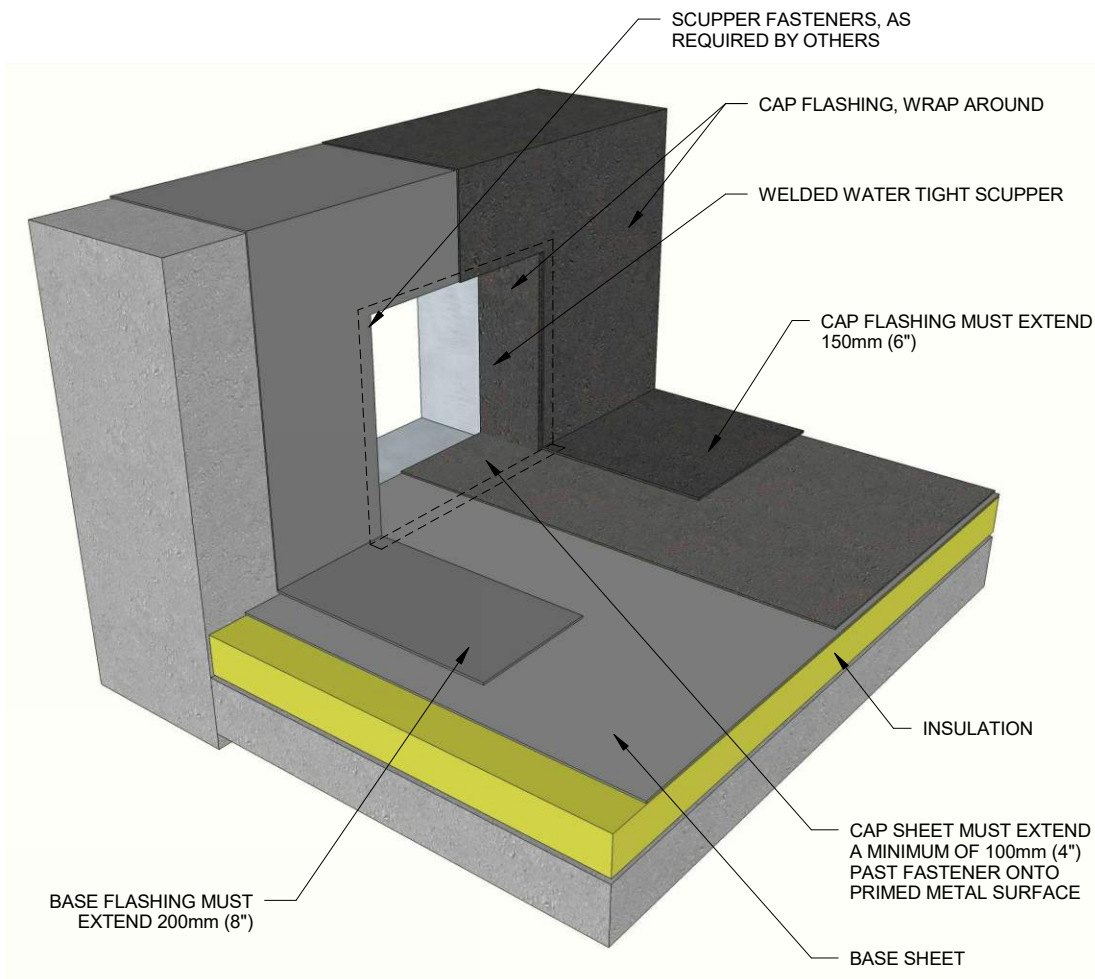


Metal Coping (24" Max. Parapet Height)

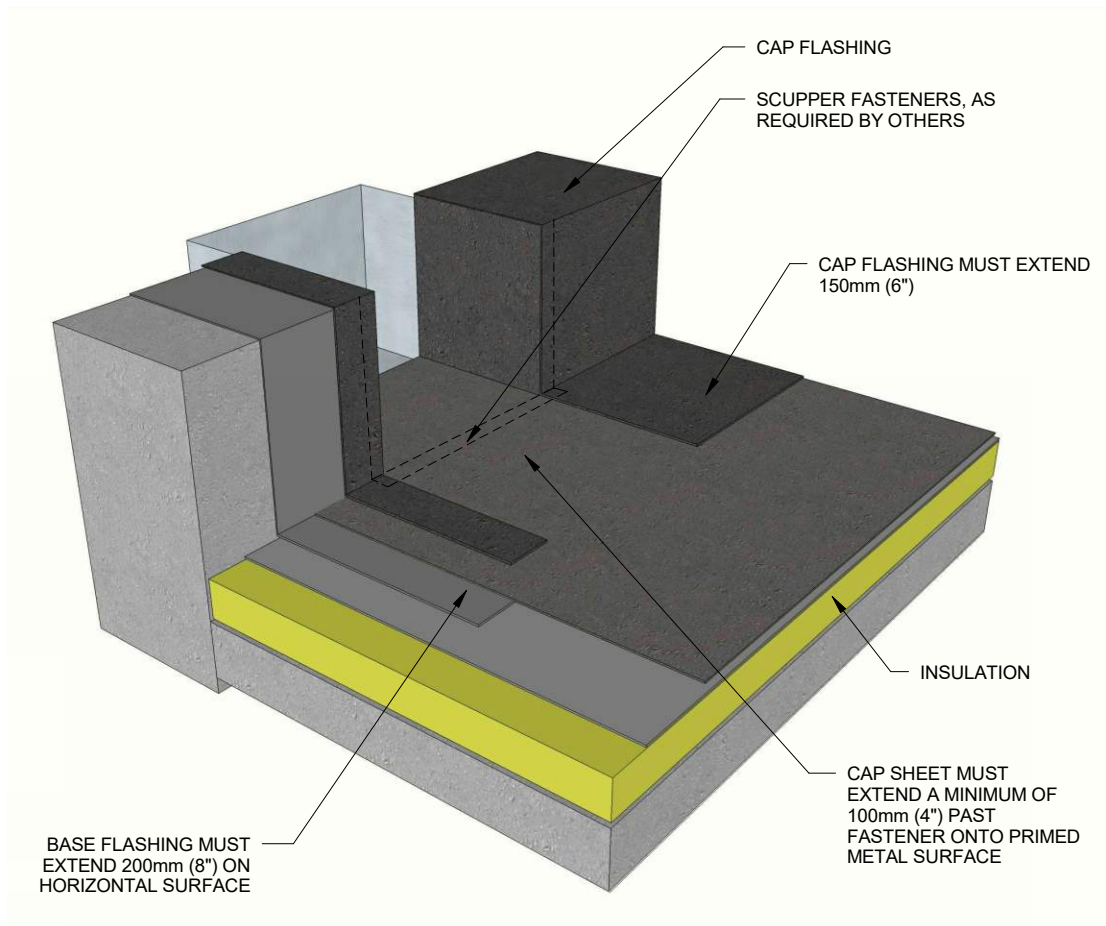




Through Wall Scupper

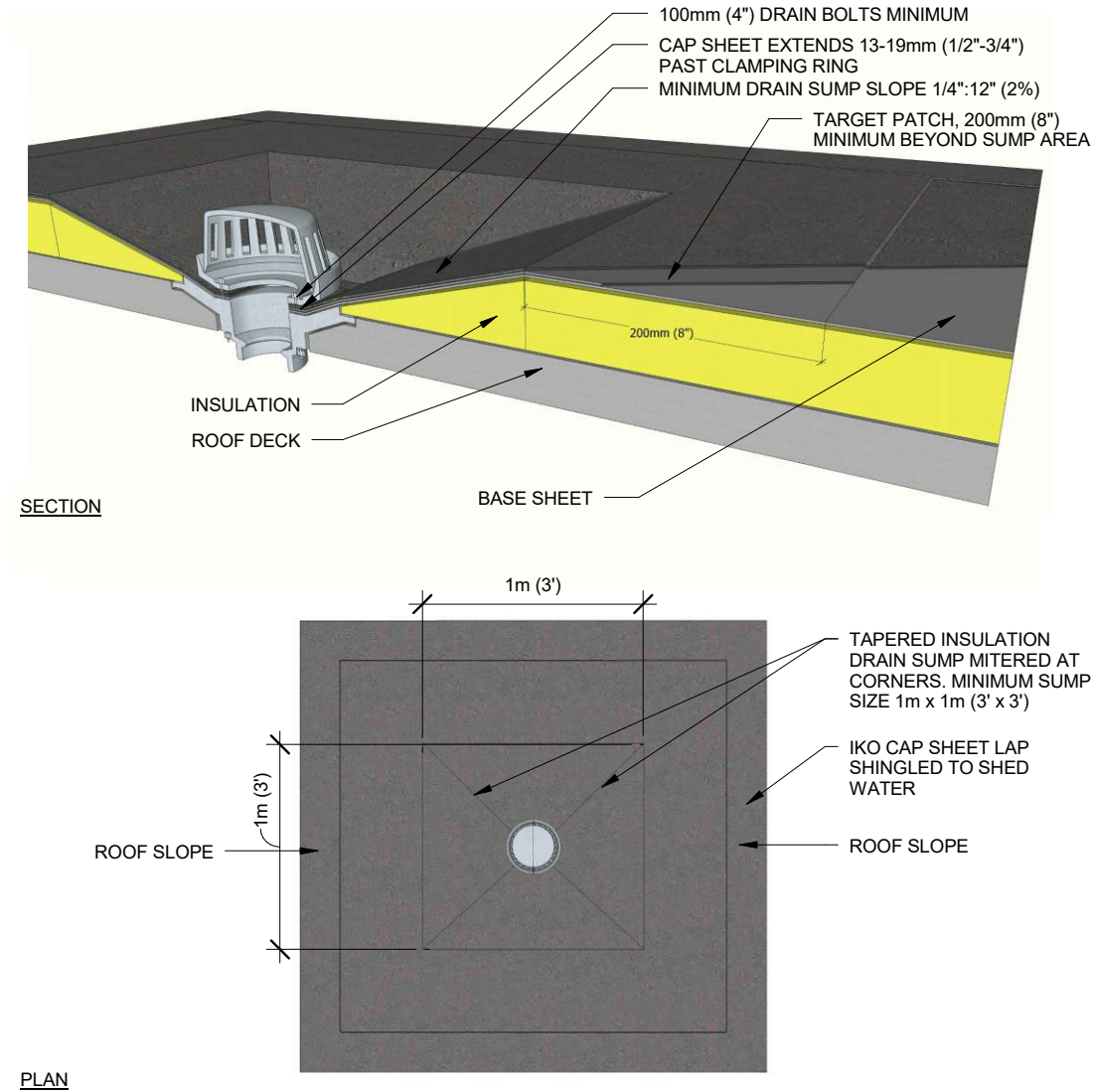


Downspout Scupper Box

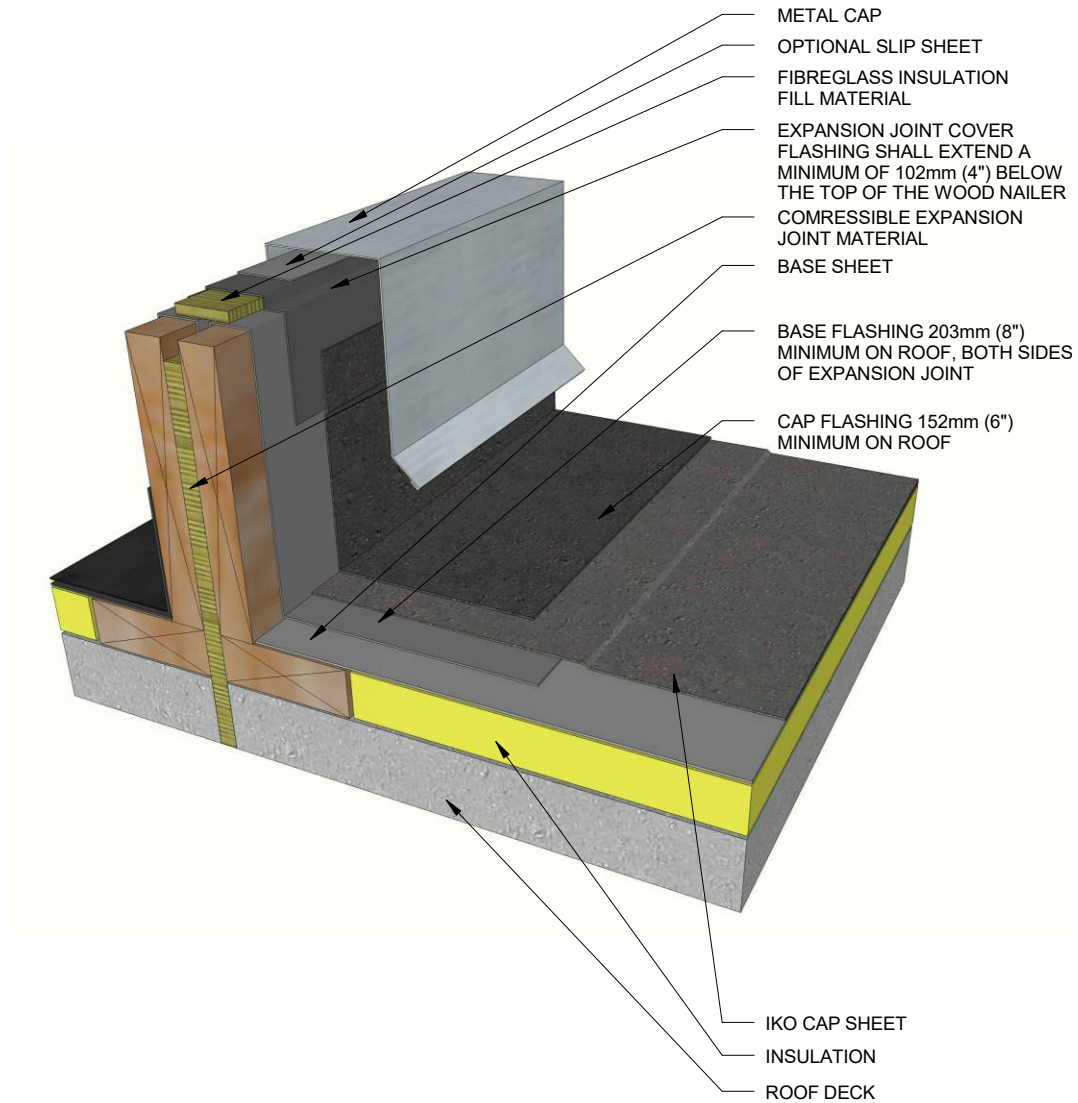




Cast Iron Roof Drain

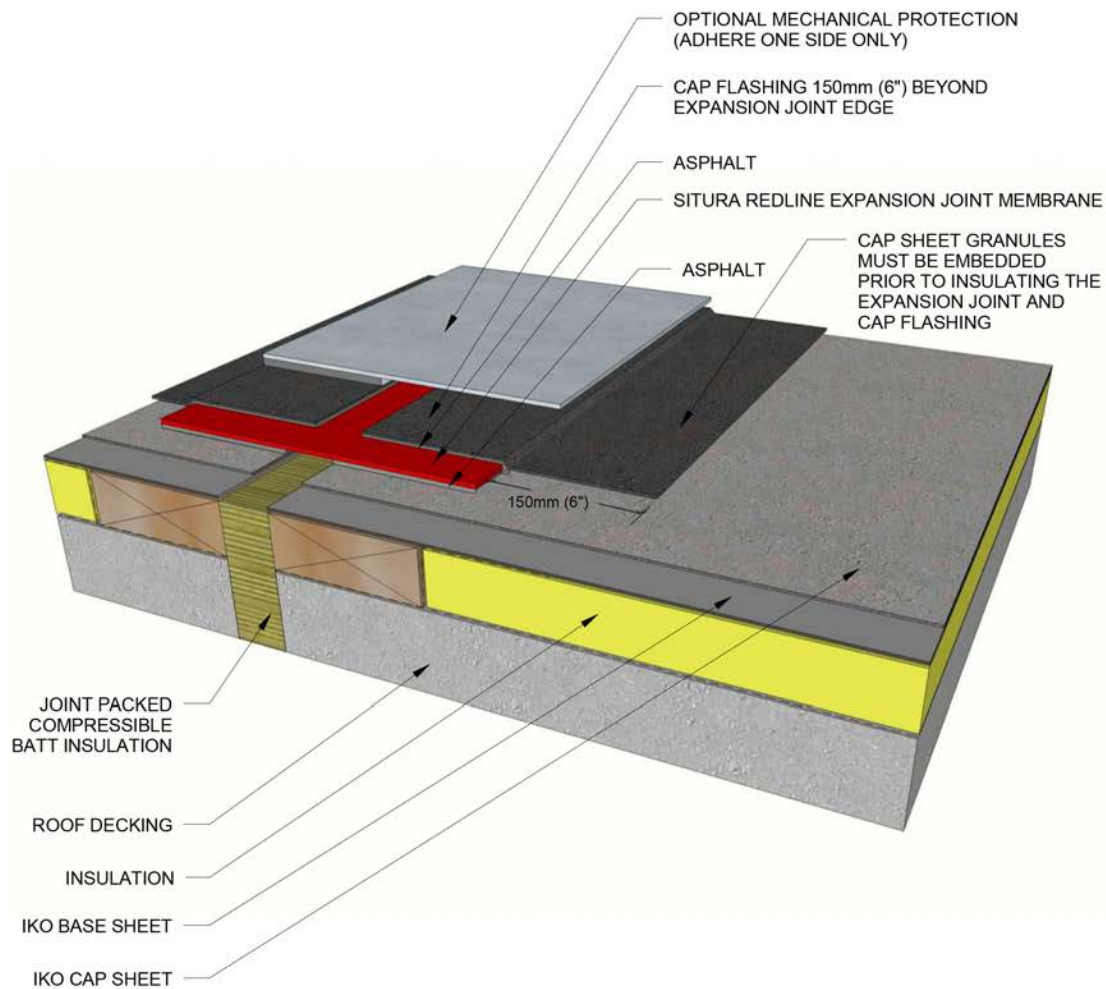


Raised Expansion Joint

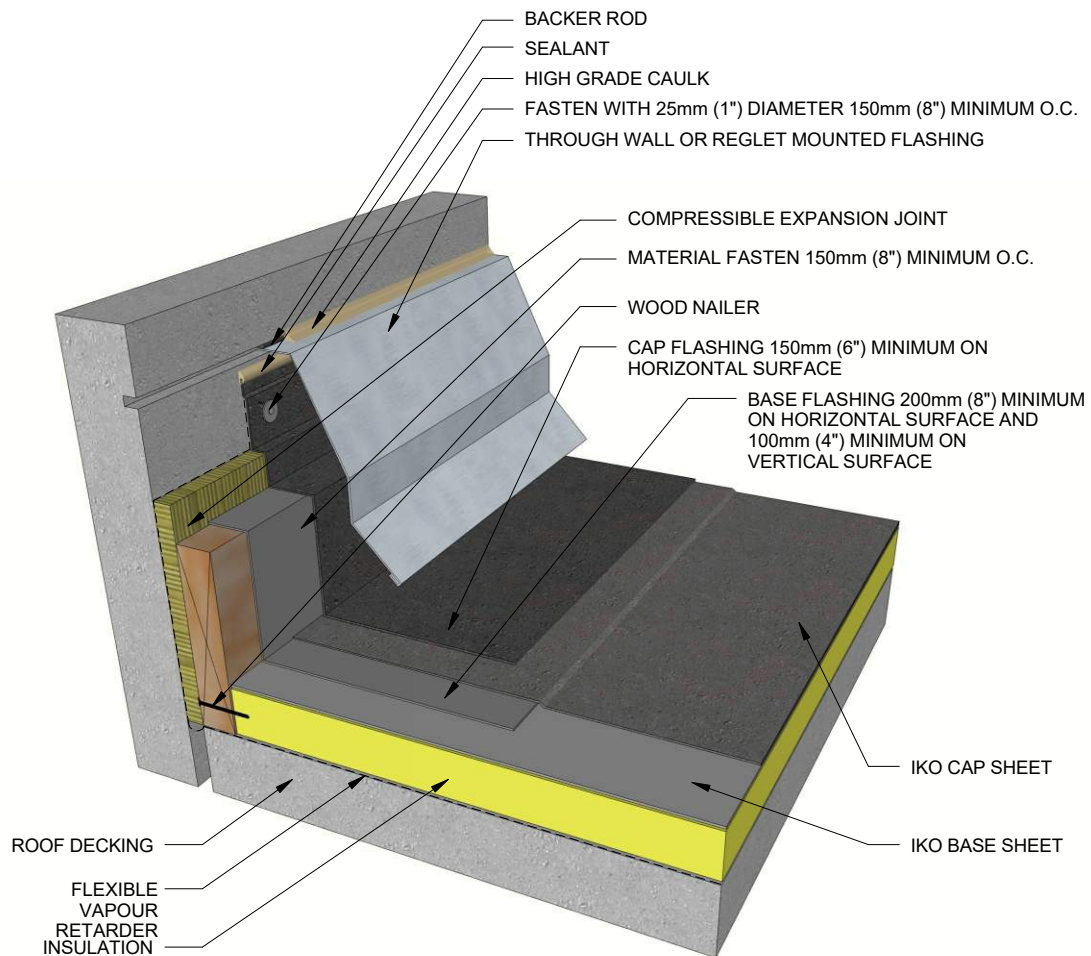




Roof Level Expansion Joint

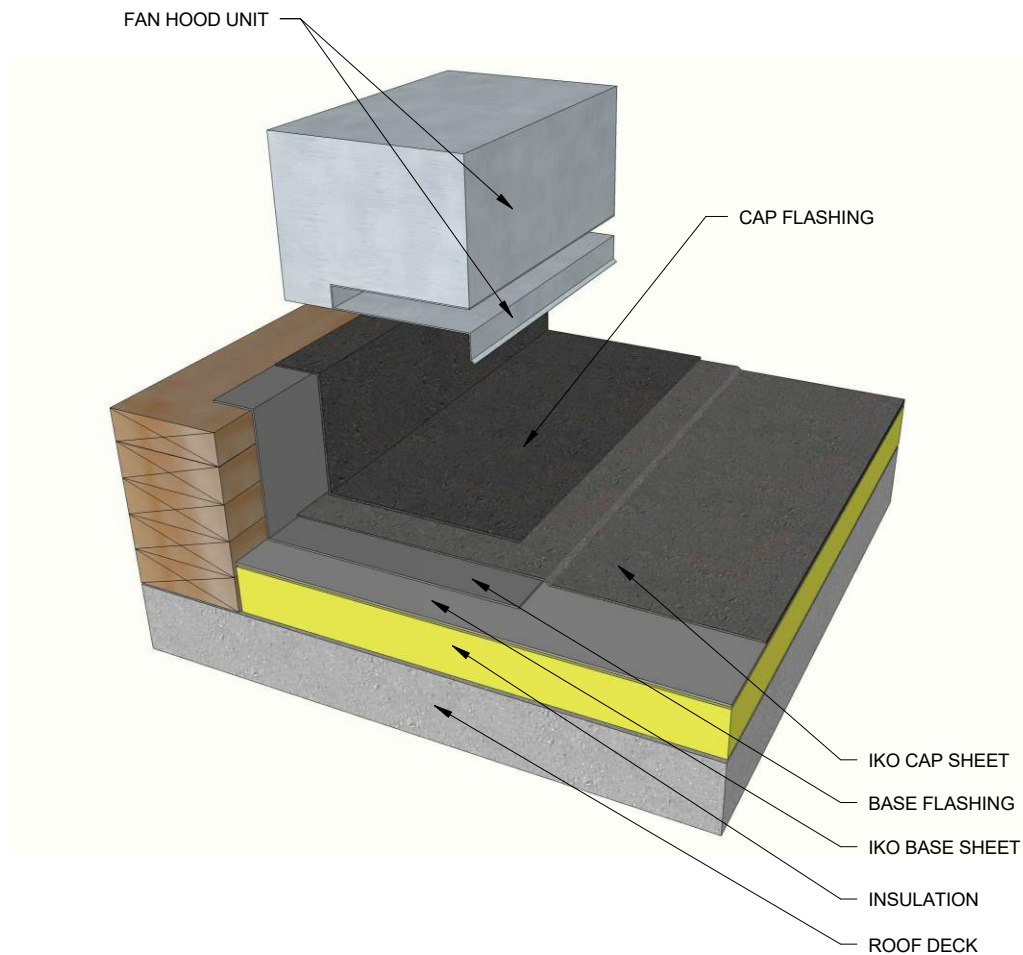


Wall Expansion Joint

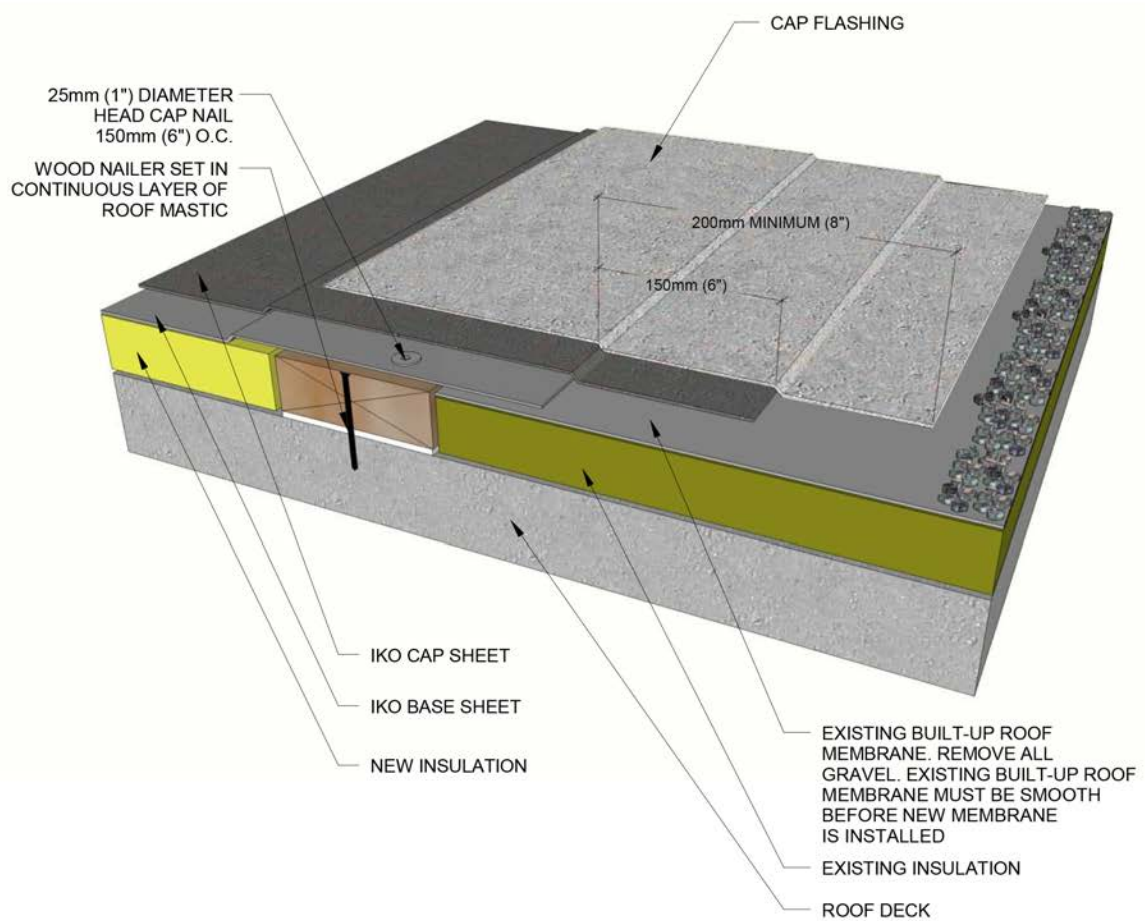




HVAC Unit

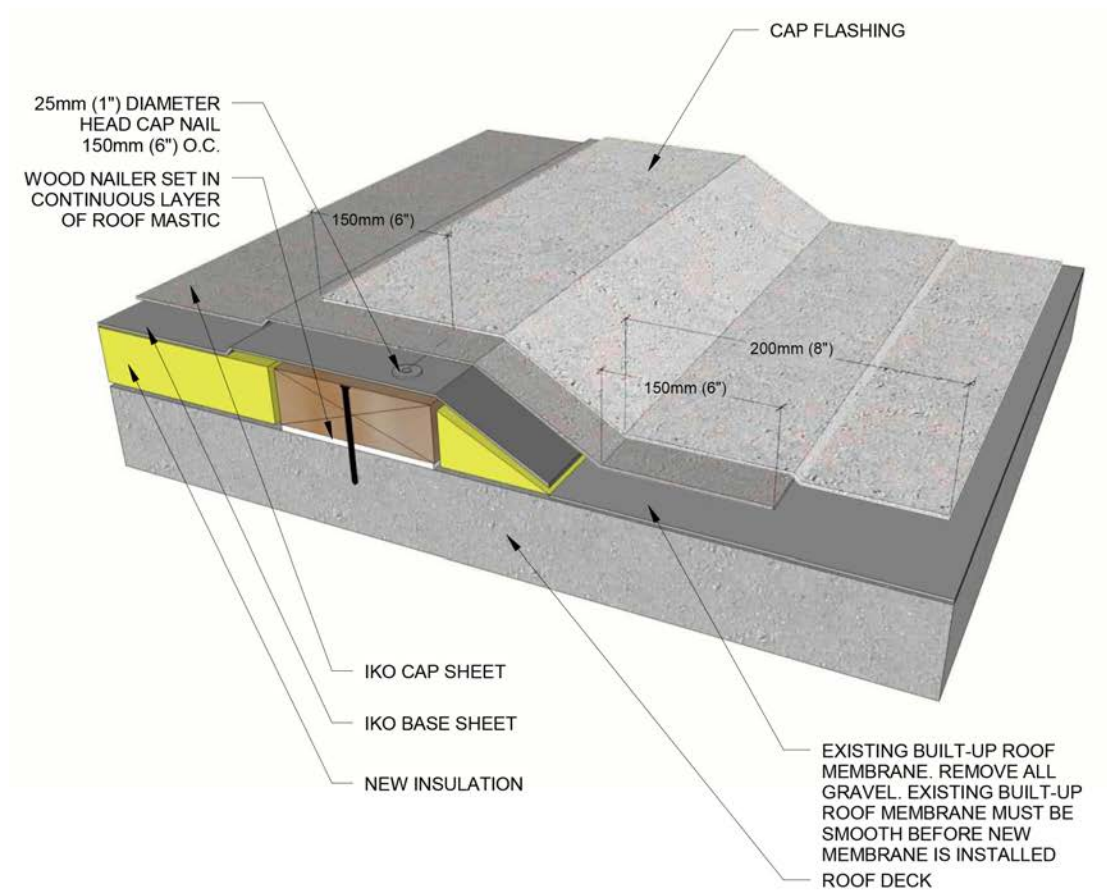


Built-Up Roof Tie-In New Roof at Same Level

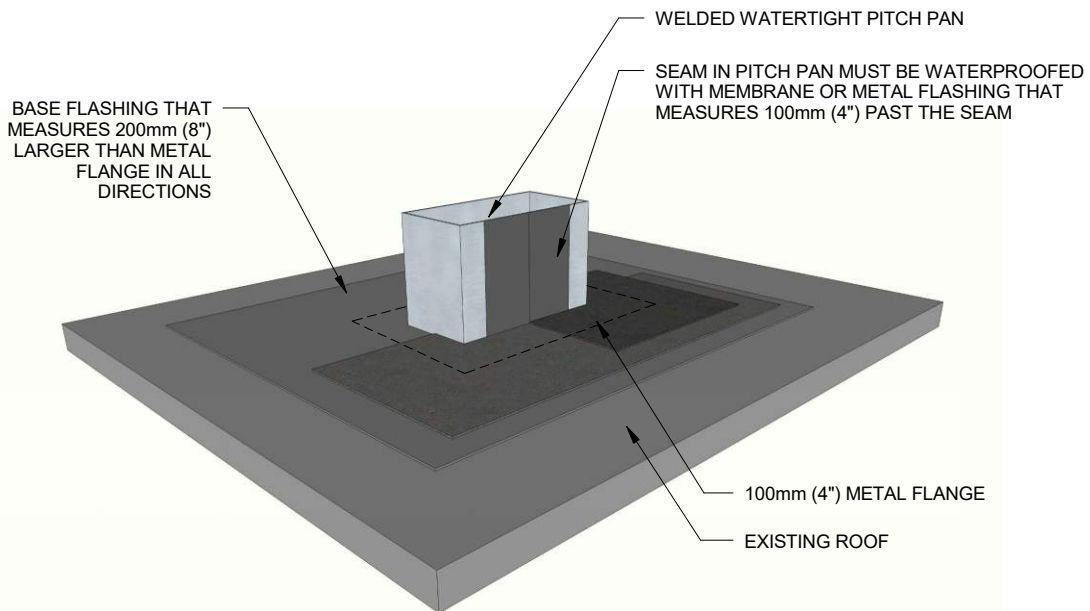




Built-Up Roof Tie-In with Tapered Edge

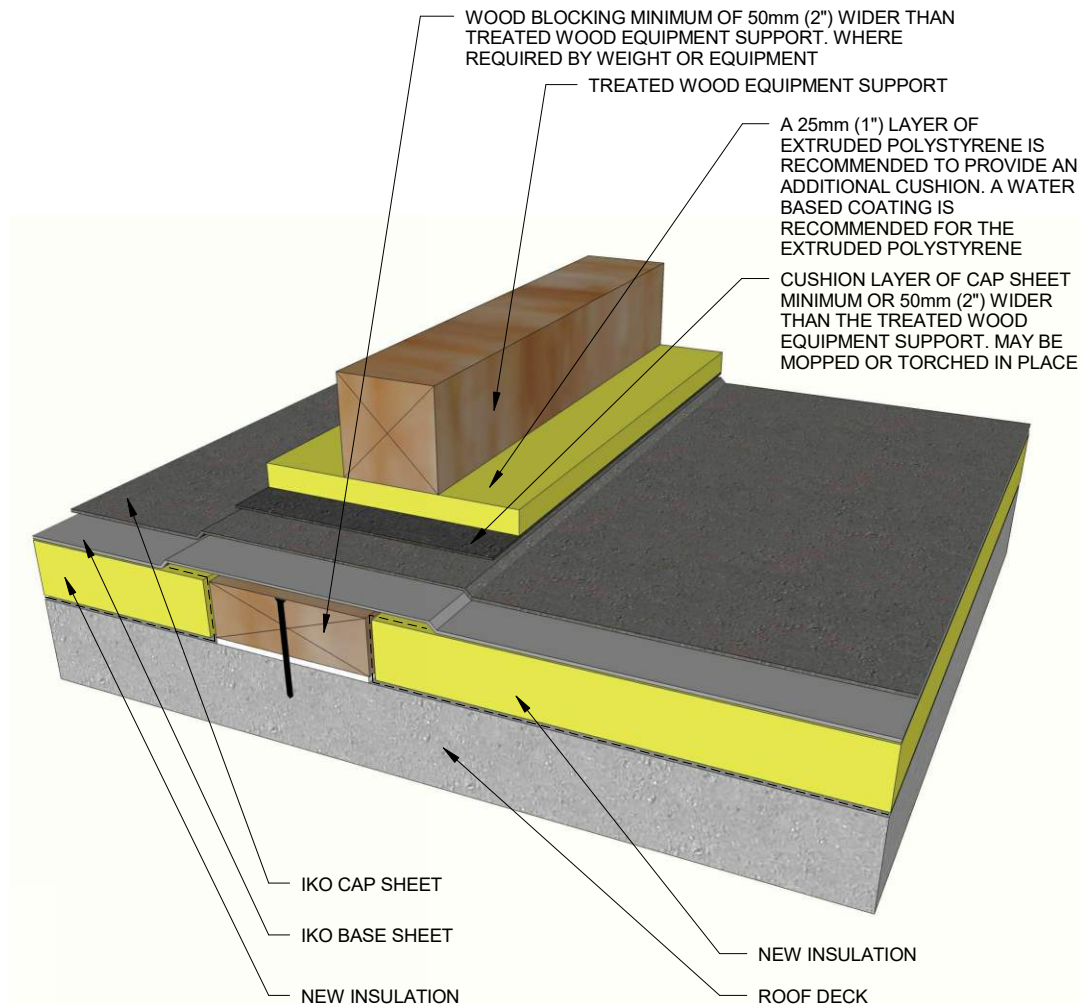


New Pitch Pan with Single Section Flashing

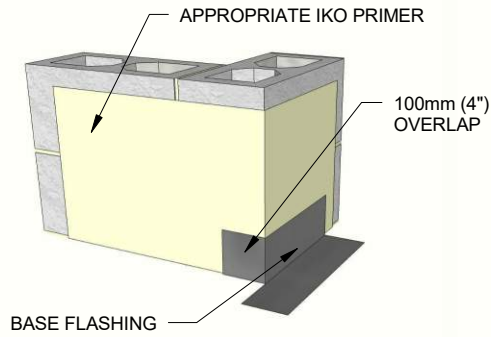




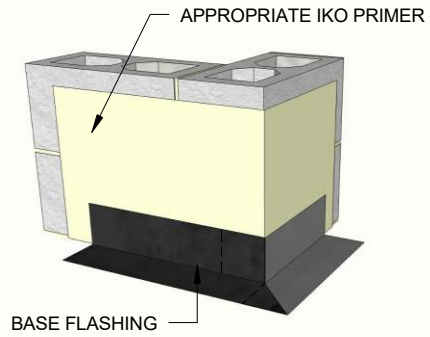
Support Sleeper



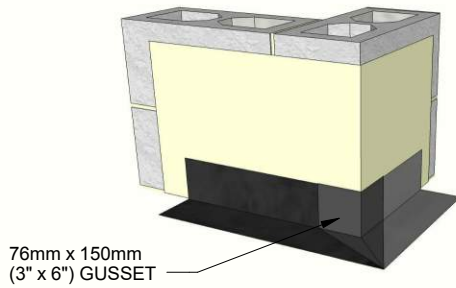
Outside Corner



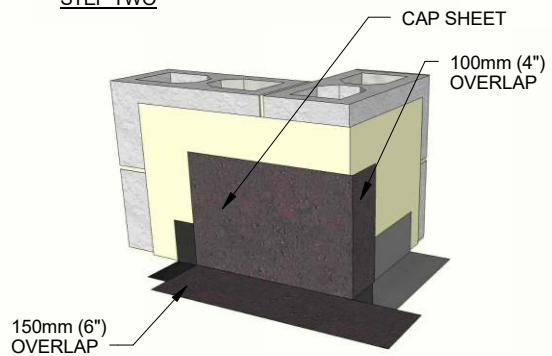
STEP ONE



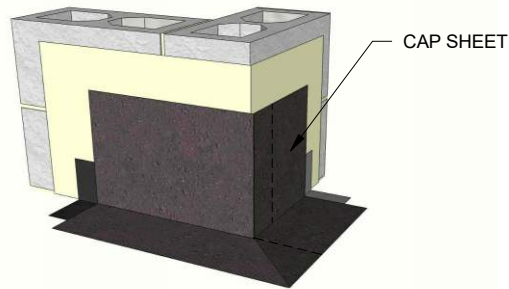
STEP TWO



STEP THREE



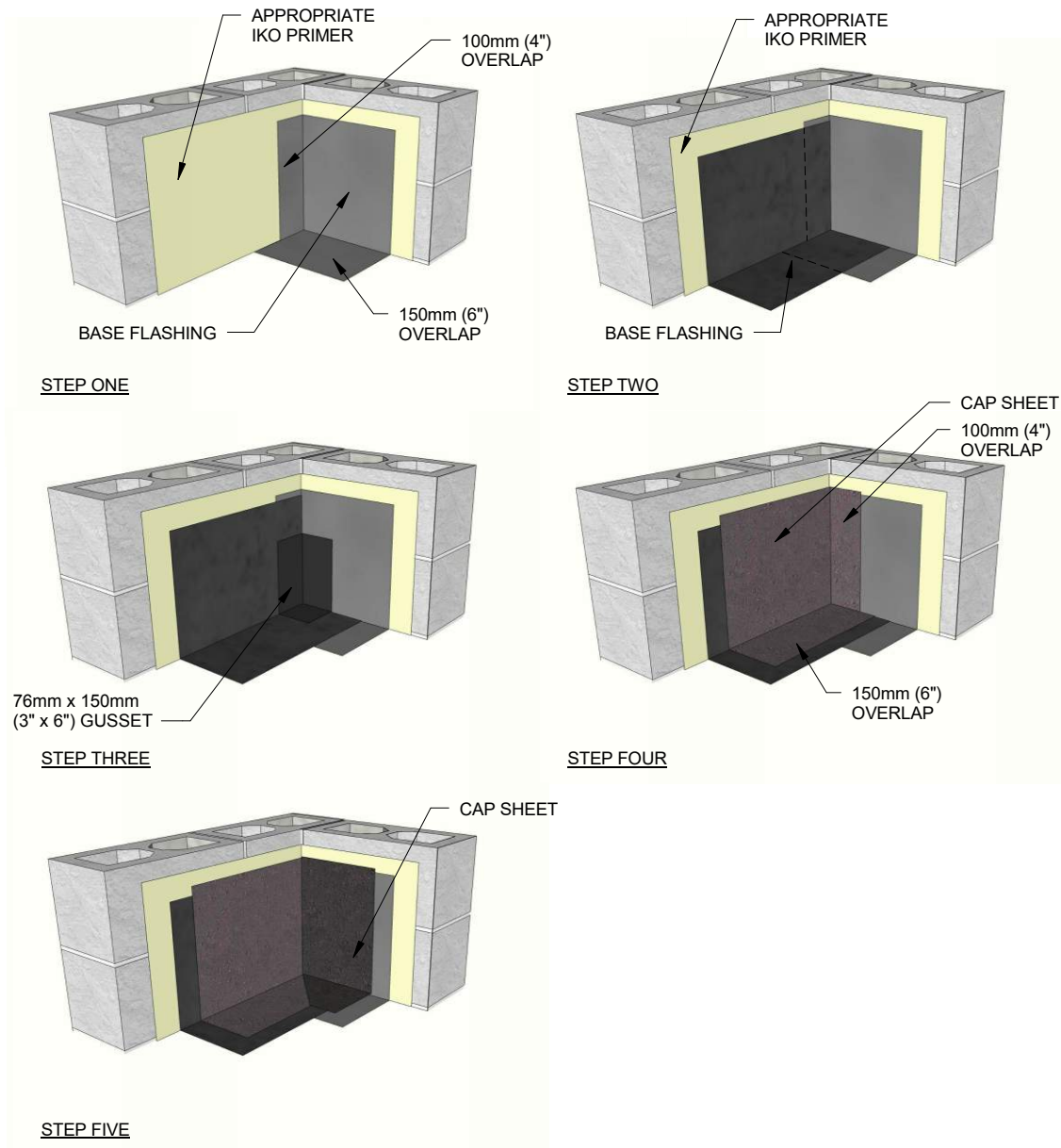
STEP FOUR



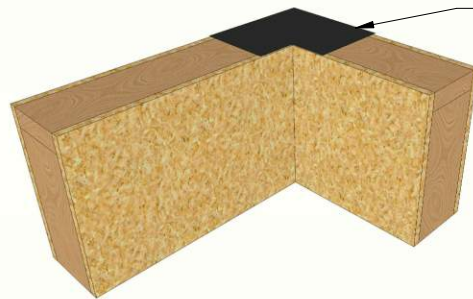
STEP FIVE



Inside Corner without Cant Strip

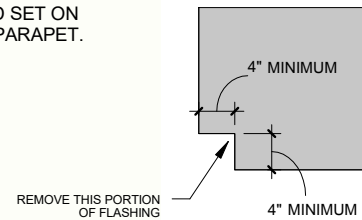


ArmourBond™ – Flashing Inside Corner Option 1

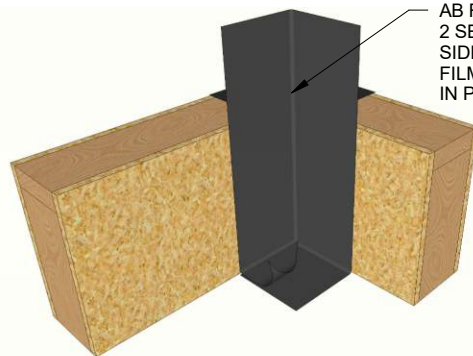


STEP ONE

SELF ADHERING MEMBRANE. REMOVE FILM AND SET ON TOP OF PARAPET.

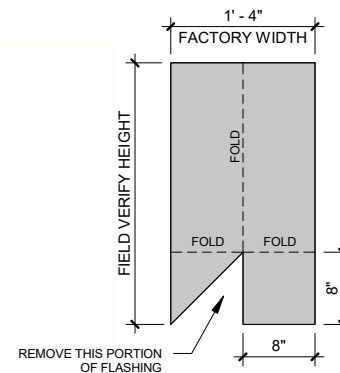


STEP ONE: FLASHING PATTERN

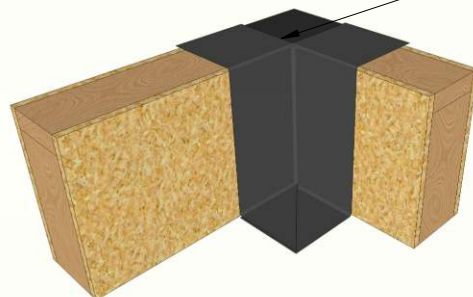


STEP TWO

AB FLASHING WITH 2 SELF ADHERING SIDES. REMOVE FILM AND SET IN PLACE.

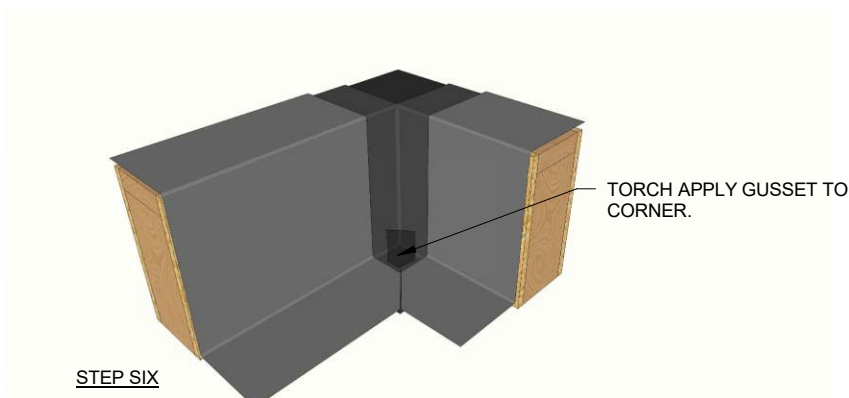
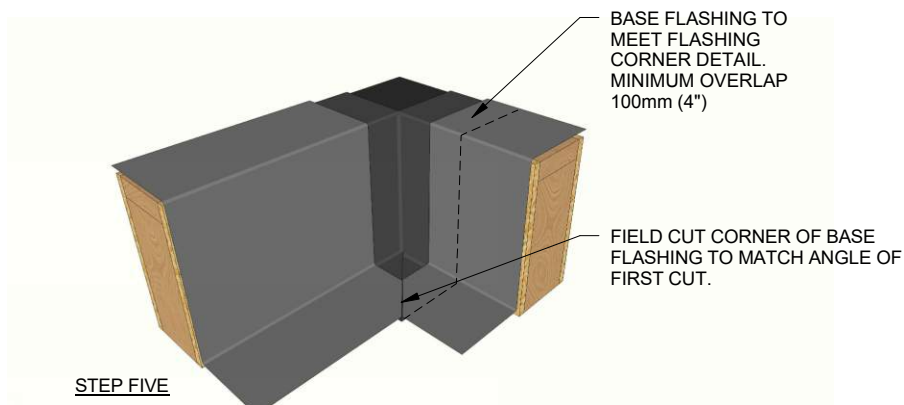
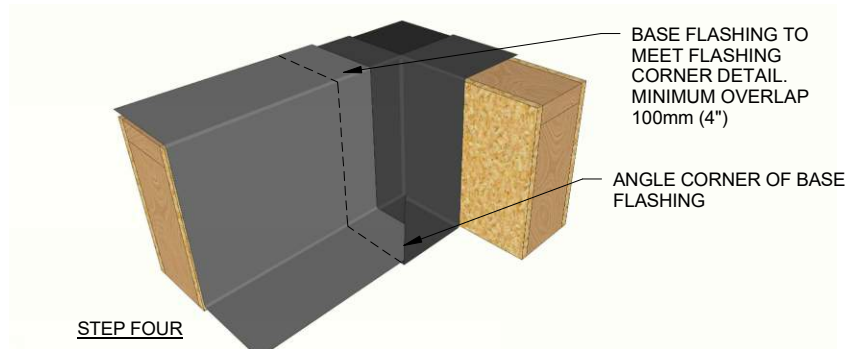


STEP TWO: FLASHING PATTERN

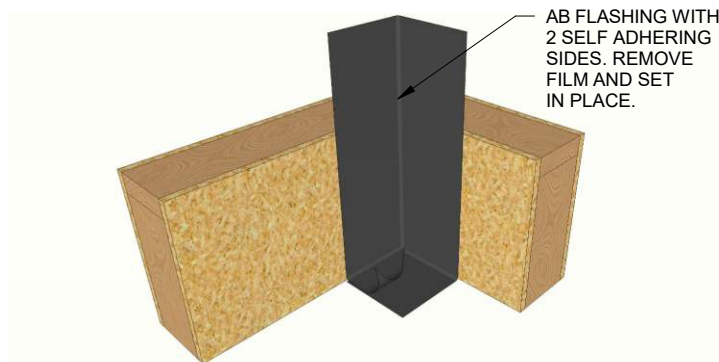


STEP THREE

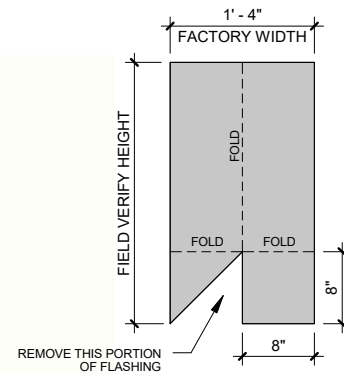
FIELD CUT FLASHING TO MEET HEIGHT OF PARAPET. WRAP ON HORIZONTAL SURFACE OF PARAPET.

**ArmourBond™ – Flashing Inside Corner Option 1**

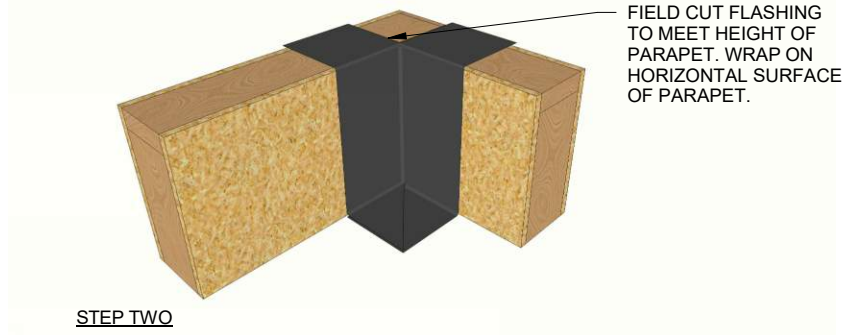
ArmourBond™ – Flashing Inside Corner Option 2



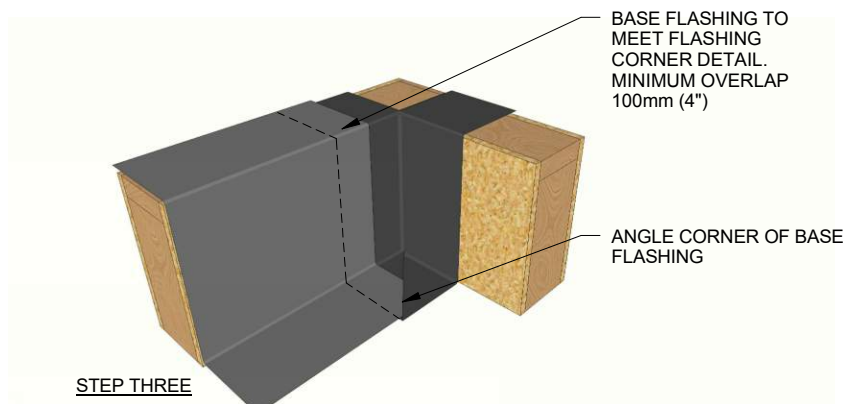
STEP ONE



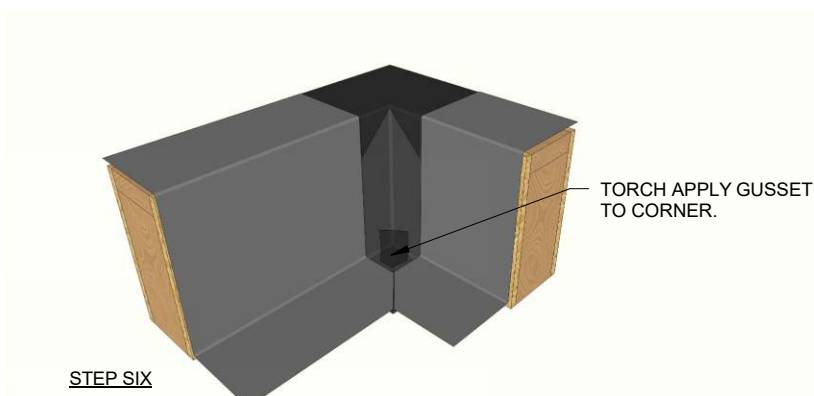
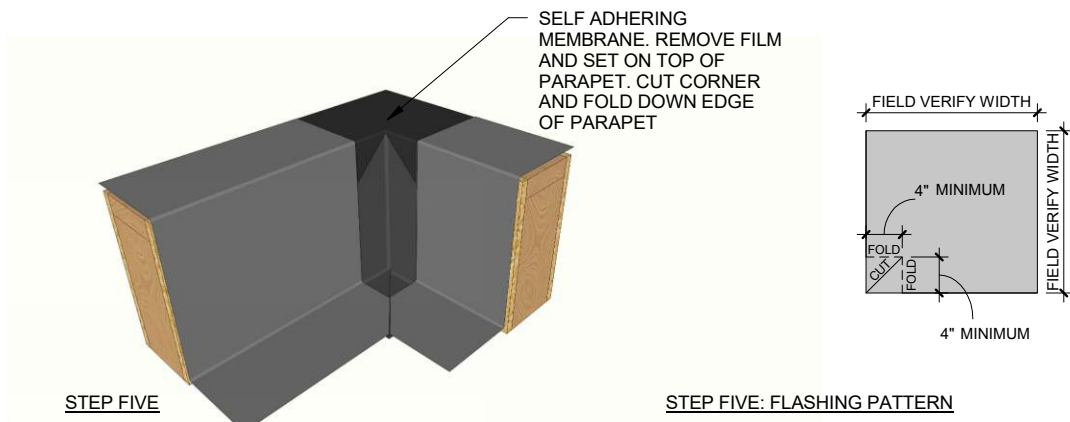
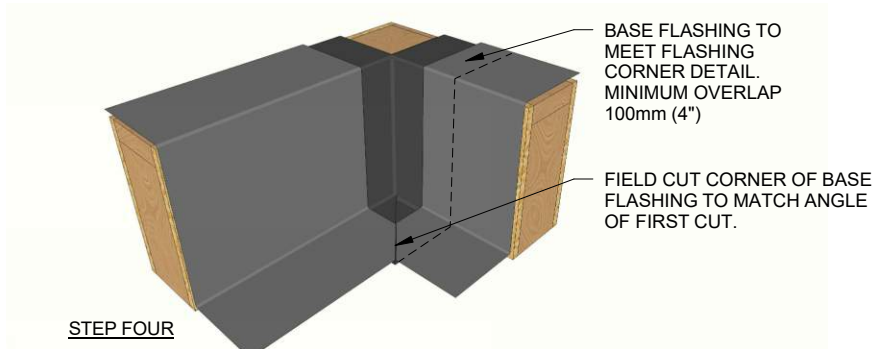
STEP ONE: FLASHING PATTERN



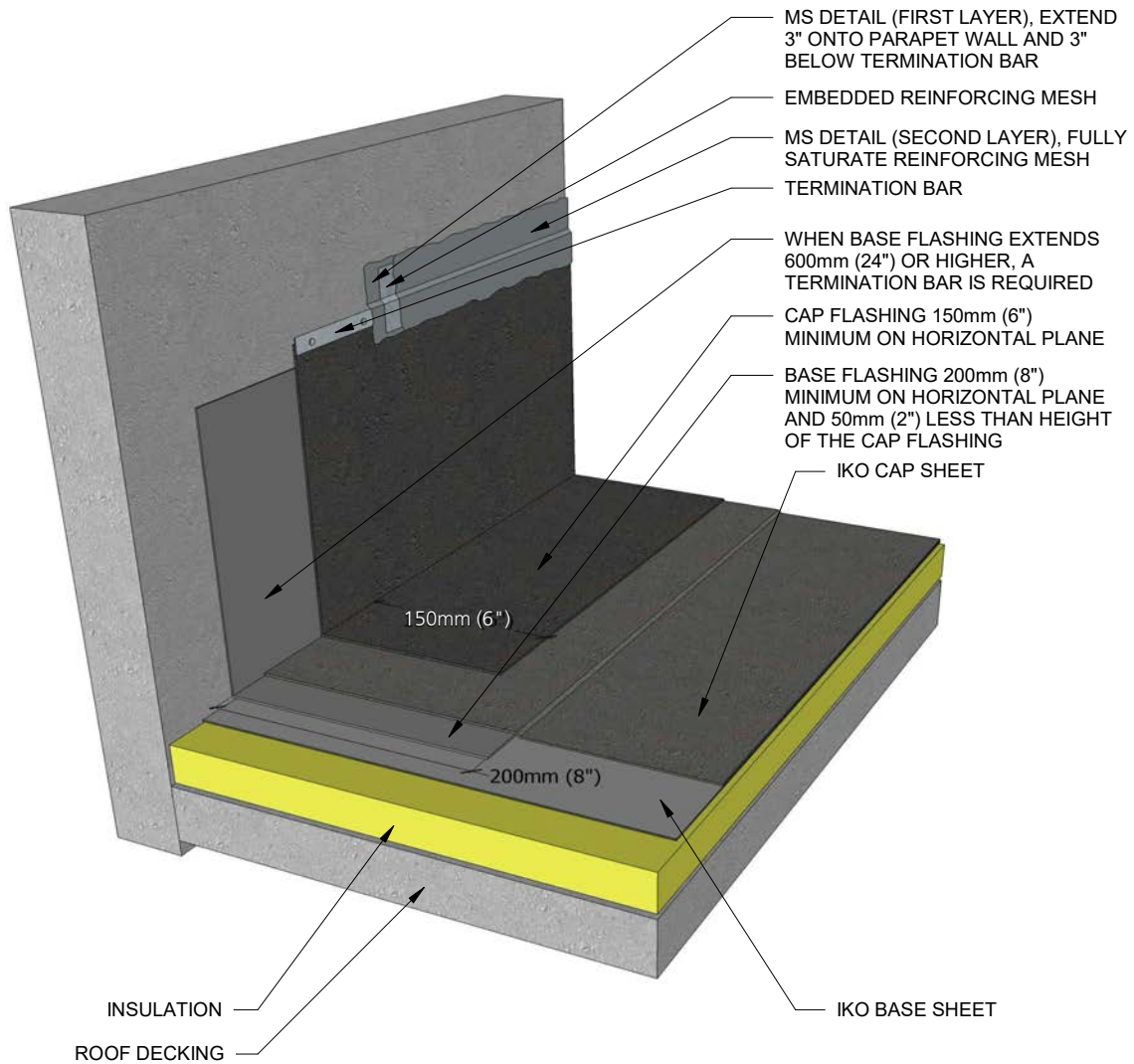
STEP TWO



STEP THREE

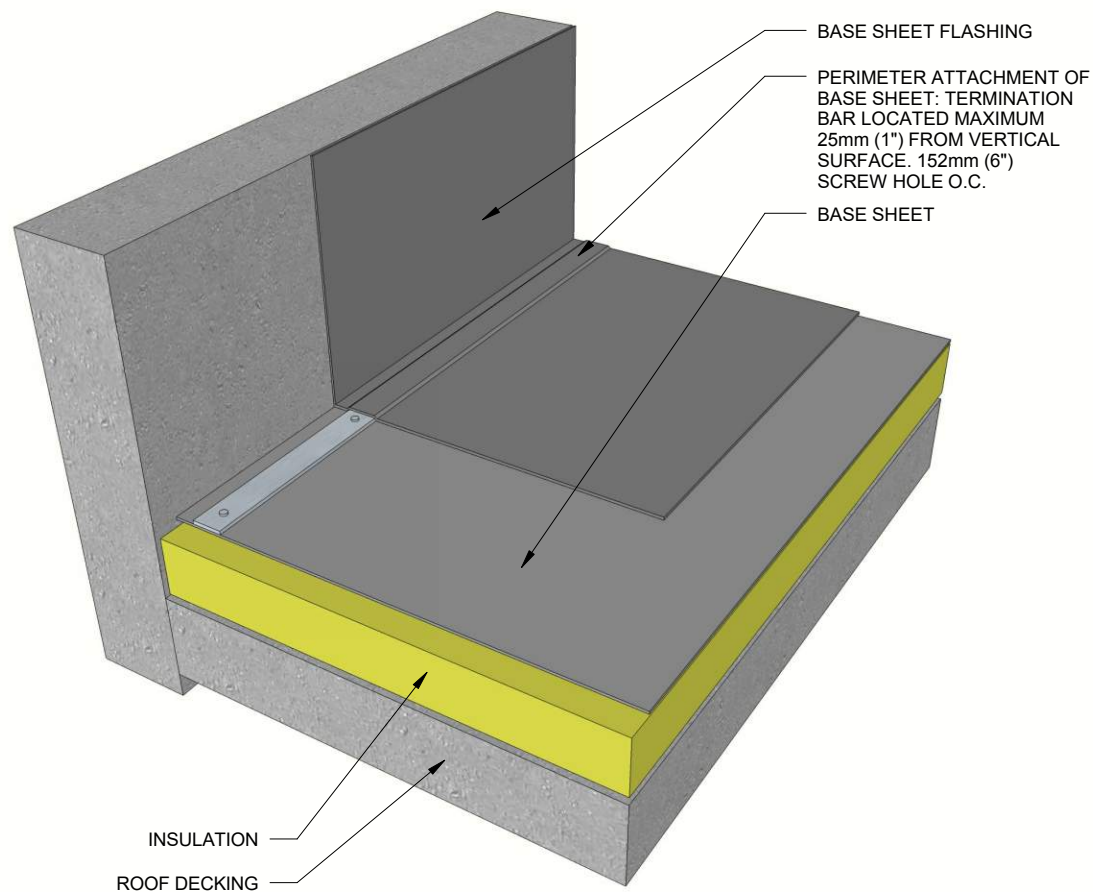
**ArmourBond™ – Flashing Inside Corner Option 2**

Termination Bar

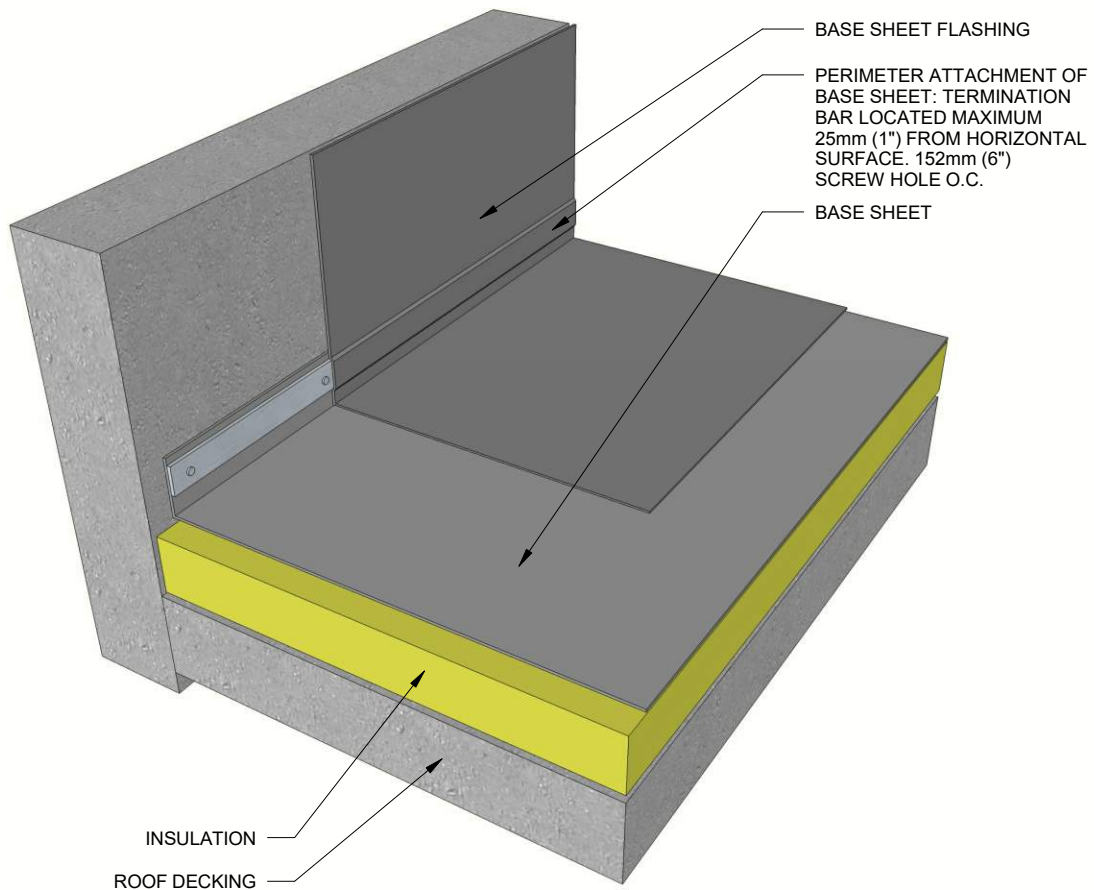




Base Sheet Perimeter Attachment – Horizontal

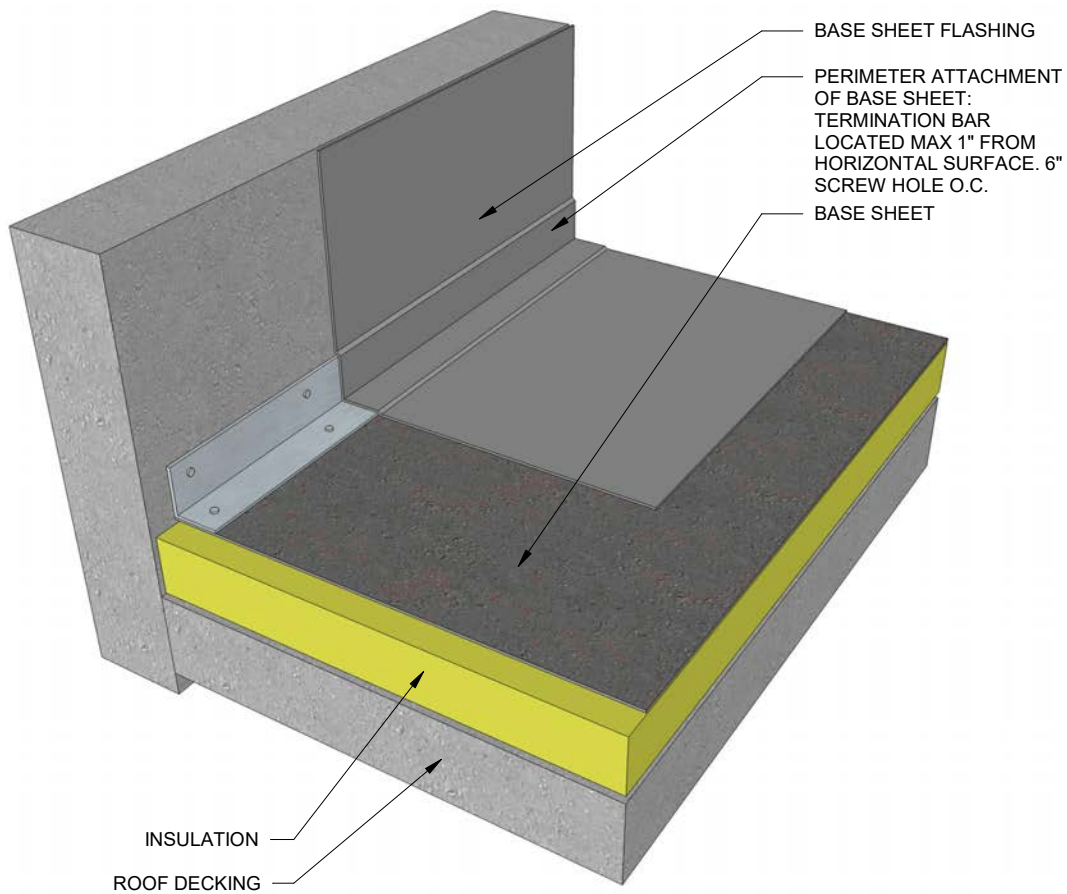


Base Sheet Perimeter Attachment – Vertical

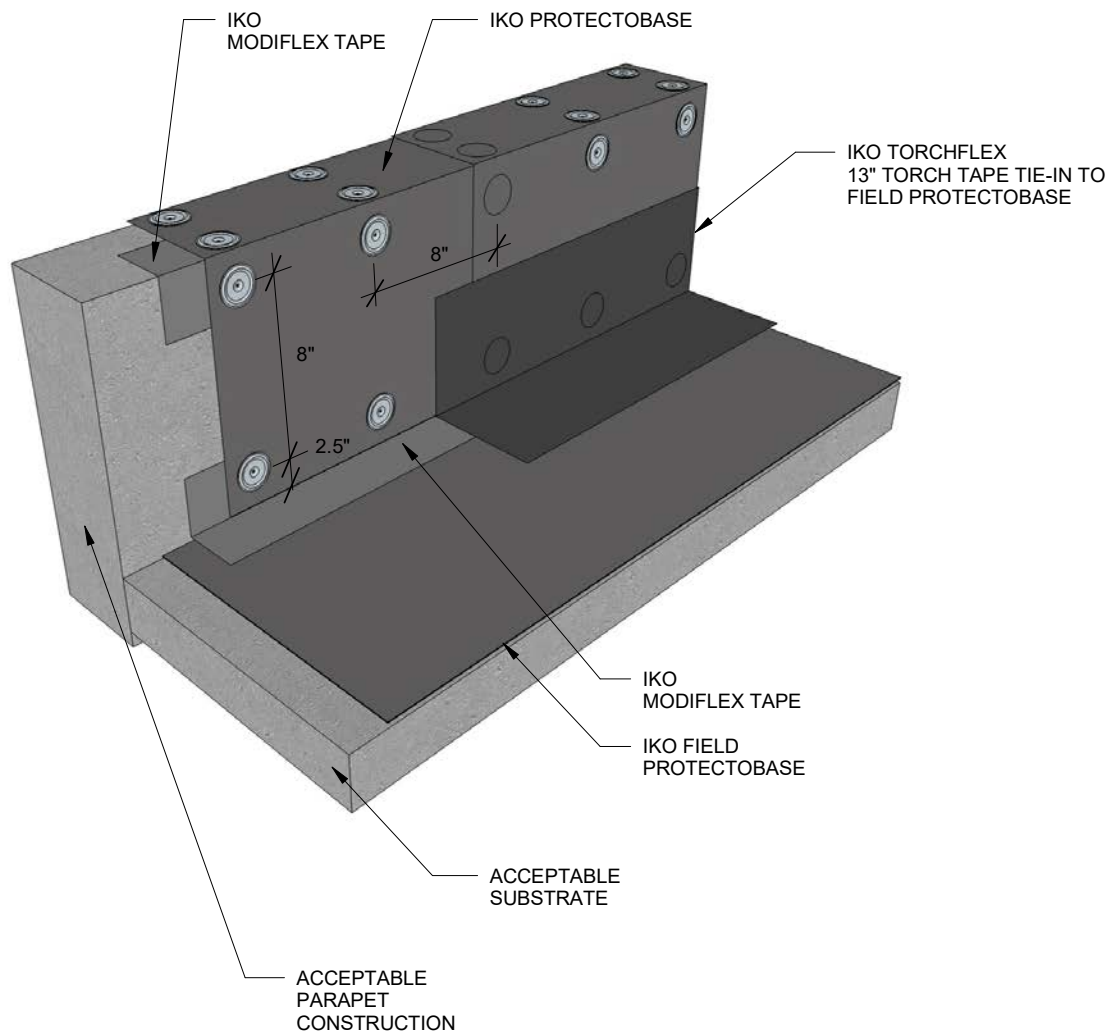




Base Sheet Perimeter Attachment – Angle



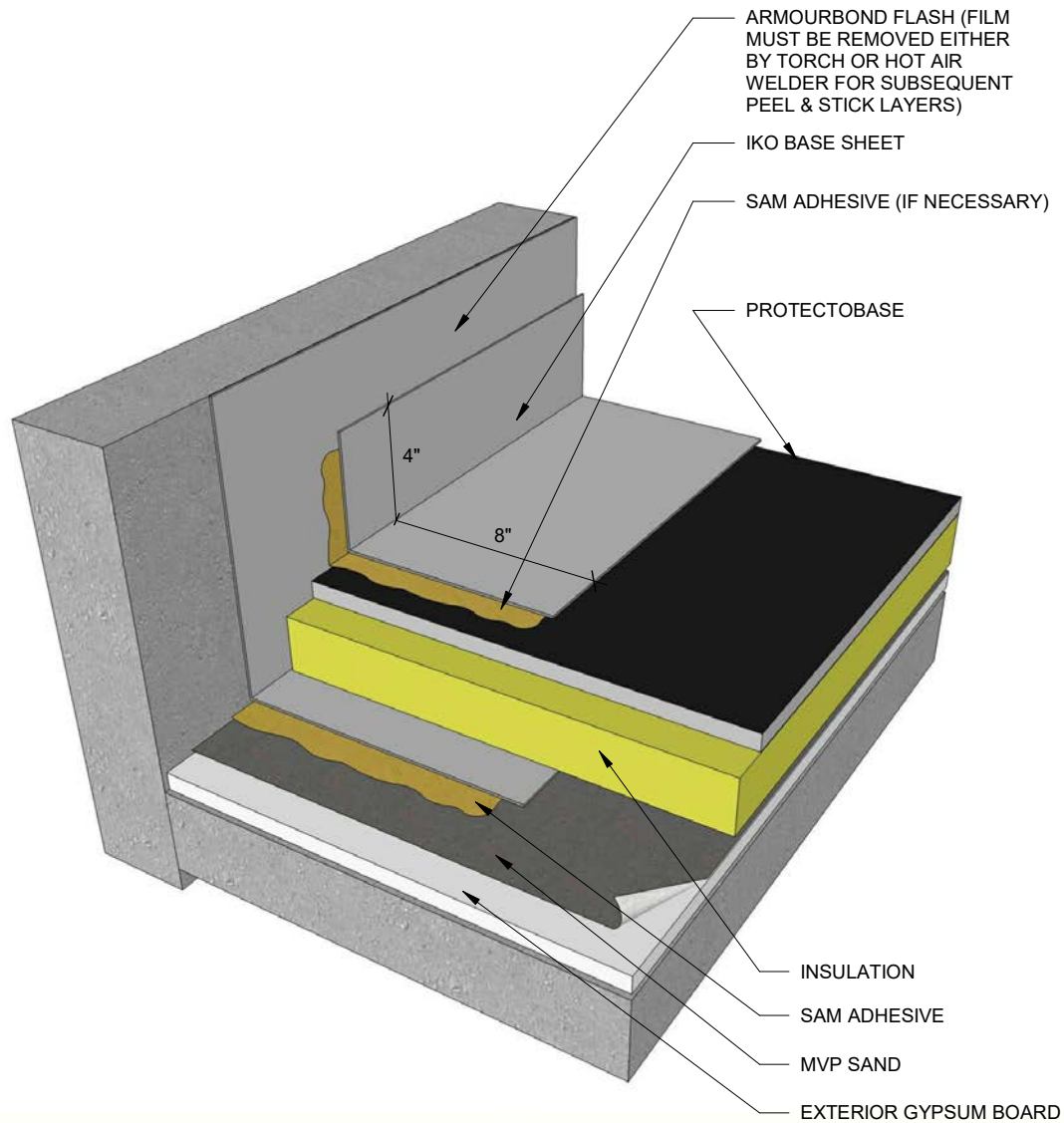
Protectobase at Parapet Detail



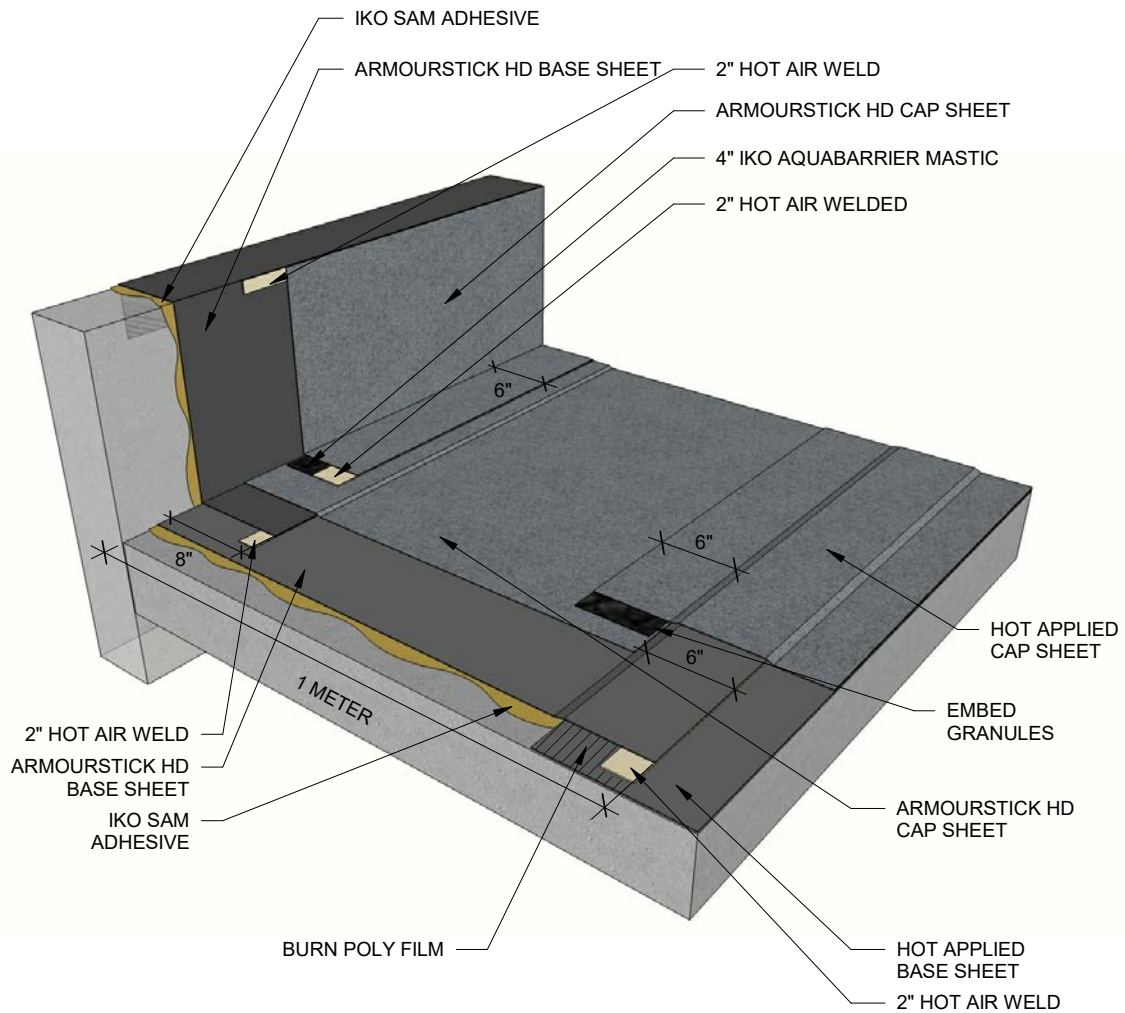
For approved mechanical fastener, contact
IKO Technical Services for more information



Protectobase Pre-Strip at Vertical



Perimeter Flame Free





Perimeter Flame Free – Low Temperature

