

# Cold Gold™

## Cold Applied Roofing Systems

### APPLICATION BOOKLET

- Solvent free
- Low VOC\*
- Non-hazardous
- Moisture cured
- Effective initial bond
- Multi-use: adhesive or flood coat



**COMMERCIAL**



## IKO Cold Gold™ Field Adhesive

COLD APPLIED ROOFING ADHESIVE

- Single component.
- To be used on the field only (horizontal surfaces 1:12 or 8% slope maximum).
- For greater slopes, use Cold Gold Flashing Adhesive.
- Can be used as a cold applied flood coat with approved stone aggregate.
- Low VOC.\*



## IKO Cold Gold™ Flashing Adhesive

COLD APPLIED ROOFING ADHESIVE

- Single component.
- Ideal for steep / vertical surfaces.
- Low VOC.\*

## Required Tools

- **Field Adhesive:**  
When used in a membrane application, the product should be applied with a 1/4" (6.4 mm) V-notched hand trowel/squeegee.
- **Field Adhesive:**  
When installed as a cold applied flood coat, the product should be applied with a 1/4" (6.4 mm) V-notched trowel/squeegee.
- **Flashing Adhesive:**  
1/4" (6.4 mm) V-notched hand trowel/squeegee for smooth surfaces or 1/4" (6.4 mm) square-notched for rough surfaces.
- Steel floor roller (Min. 75 lb. - Max. 100 lb.).
- Hand roller
- T-square
- Chalk line
- Mineral spirits (for cleaning tools)
- Roofing knife
- Broom
- Hot air welding gun



## Field Adhesive 18.9 L (5 gal) Pail



- Do not mix.
- Apply evenly using a 1/4" (6.4 mm) V-notched hand trowel/squeegee for smooth surface or 1/4" (6.4 mm) square-notched hand trowel/squeegee for rough surface.
- Trowel must be perfectly vertical.
- Coverage as a membrane application is approximately 18.6-23.2 m<sup>2</sup> (200-250 ft<sup>2</sup>) per 5 gallon pail - May vary according to weather conditions.
- Coverage as a cold applied flood coat is approximately 9.29-13.94 m<sup>2</sup> (100-150 ft<sup>2</sup>) per 5 gallon pail - May vary according to site and weather conditions as well as geographic region.
- Use hot air welding gun to seal outside 2" (50.8 mm) for all end and side laps.

## Rolling



- Roll membrane using a 75 lb.- 100 lb. roller.
- Ensure rolling is performed from centre of sheet outward in order to remove air pockets.

## Membrane Application

### Field

- Modiflex™ MF-95-SS-Base  
15 m<sup>2</sup> (161 ft<sup>2</sup>)/roll
- Modiflex™ MP-180-SS Base  
15 m<sup>2</sup> (161 ft<sup>2</sup>)/roll
- Modiflex™ MP-HD-SS  
15 m<sup>2</sup> (161 ft<sup>2</sup>)/roll
- Modiflex™ MP-180-Cap  
10 m<sup>2</sup> (108 ft<sup>2</sup>)/roll
- Modiflex™ MP-HD Cap  
10 m<sup>2</sup> (108 ft<sup>2</sup>)/roll

### Flashings

- Modiflex™ MP-180-SS-Base  
15 m<sup>2</sup> (161 ft<sup>2</sup>)/roll
- Modiflex™ MP-HD-SS-Base  
15 m<sup>2</sup> (161 ft<sup>2</sup>)/roll
- Modiflex™ MP-180-Cap  
10 m<sup>2</sup> (108 ft<sup>2</sup>)/roll
- Modiflex™ MP-HD Cap  
10 m<sup>2</sup> (108 ft<sup>2</sup>)/roll

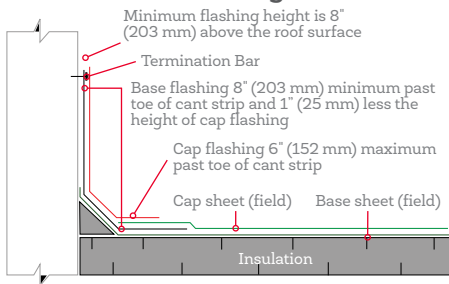
## Flashing Adhesive 18.9 L (5 gal) Pail



- Do not mix.
- Fully cover substrate in IKO Cold Gold Flashing Adhesive using 1/4" (6.4 mm) V-notched for smooth surfaces or 1/4" (6.4 mm) square-notched for rough surfaces.
- Coverage per pail is approximately 18.6 to 23.2 m<sup>2</sup> (200 to 250 sq. ft.) for 1/4" (6.4 mm) V-notched trowel application and 9.3 to 11.6 m<sup>2</sup> (100 to 125 sq. ft.) for 1/4" (6.4 mm) square-notched trowel application.
- Appropriate for substrates receiving cold-applied flashing membranes.
- A trowel-grade component system adhesive suitable for all substrates.
- Ensure proper adhesion by using a hand roller over the entire area. Excessive adhesive will require longer cure time.
- Apply Flashing Adhesive to all inside and outside corners to form a liquid gusset.
- Use hot air welding gun to seal outside 2" (50.8 mm) for all end and side laps.
- Secure base flashing at upper edge on parapets with mechanical fasteners (minimum 1" (25.4 mm) wide termination bar), fastening every 6" (152.4 mm) on center. Ensure the last 2" (50.8 mm) of base flashing are hot air welded in place.

## Flashing Adhesive

### IKO Standard Flashing Detail



### Features and Benefits

- Solvent-free: No pungent odours and no fire hazard.
- Low VOC.\*
- Non-hazardous: Unrestricted transport in North America.
- Moisture-cured: No solvents to "flash off" with effective initial bond.
- Wide range of application temperatures: 4°C (40°F) to 40°C (104°F).
- Easy to apply (notched squeegee) and easy to clean (mineral spirits).
- Compatible with Modiflex base and cap sheets and vapour retarders.
- Substantial cure in 48 hours under ideal conditions.

\*VOC content is less than 250 g/L in accordance with California's Quality Management District (Rule 1168)



## Installation Tips

---

- Use product without mixing.
- Relax membrane prior to use.
- Back-roll membrane to reduce memory in reinforcement and to ensure full bond.
- Keep product warm until ready for use.
- Clean tools with mineral spirits.
- Roll all materials after they are installed.
- When used in a membrane application, IKO Cold Gold Field Adhesive should be applied with a 1/4" (6.4 mm) V-notched hand trowel/squeegee.
- When installed as a cold-applied flood coat, IKO Cold Gold Field Adhesive should be applied with a 1/4" (6.4 mm) V-notched trowel/squeegee.
- IKO Cold Gold Flashing Adhesive should be applied using a 1/4" (6.4 mm) V-notched hand trowel/squeegee for smooth surfaces and 1/4" (6.4 mm) square-notched for rough surfaces.
- Train all applicators in proper installation methods.
- Use the recommended amount of IKO Cold Gold Adhesive.

# Cold Gold™

## Cold Applied Roofing Systems

APPLICATION BOOKLET

Find out more about our products now by talking to an IKO Sales Representative, your professional contractor or contact us directly at:

Canada **1-855-IKO-ROOF** (1-855-456-7663),

United States **1-888-IKO-ROOF** (1-888-456-7663)

or visit our website at: [IKO.COM/COMM](http://IKO.COM/COMM).



## **COMMERCIAL**

The physical properties of the products described in this catalogue represent average typical results obtained by testing our products according to accepted industry test methods. These values are subject to normal manufacturing variations, and are supplied as a technical guideline only; they may be subject to change without notice. Current product specifications can be confirmed by contacting your local IKO Technical Representative.

Also, the guide specifications contained herein are offered as general information for the design and installation of IKO roof assemblies. IKO Industries Limited is a supplier of materials, and we cannot assume liability for errors in roof design, engineering, or application. The architect, contractor, and/or building owner's representative must verify all dimensions, details and suitability of roof design.

**Note:** All values shown are approximate. Product availability subject to shipping area. The information in this document is subject to change without notice. IKO assumes no responsibility for errors that may appear in this document.