

PROJECT

Project Profile

St. Joseph Morrow Park
Catholic Secondary School

TORONTO, ONTARIO



COMMERCIAL®

Specify with Confidence.

Project Profile

St. Joseph Morrow Park Catholic Secondary School

TORONTO, ONTARIO

The Project

The new St. Joseph Morrow Park Catholic Secondary School is a three-story, 100,000-square-foot facility which opened in September 2021 for the new 2021-2022 academic year. Scheduled for completion in September 2020, construction was pushed out to 2021 due to the COVID-19 pandemic.

Operated by the Toronto Catholic District School Board, St. Joseph Morrow Park is a publicly funded all-girls school situated at the south end of a long and narrow site that is flanked by private residences. Primary building materials are a concrete and steel structure, brick, and aluminum panel exterior and concrete block partitions.

The school's academic and administrative block is configured in an L-shape around a central courtyard. Immediately adjacent to the courtyard are the majority of public student spaces — a cafeteria, gymnasium, library and a private chapel. The atrium and gym are topped with two large green roofs.

The Challenge

Pedra Roofing faced typical Toronto weather challenges during the winter months of the project, especially in November and December. The biggest challenge the project faced was delays from the COVID pandemic.

According to Owner Daniel Pedra, Pedra Roofing has worked with IKO for many years. "They are our number one manufacturer. It's all about product reliability. We never worry about using an IKO membrane. An IKO commercial representative is attentive and offers to assist us on site if there are any challenges. They always provide a solution within 24 hours."

The Solution

Pedra Roofing installed an IKO 2-ply SBS Modified Bitumen Roofing System using two layers of IKOTherm Polyisocyanurate Insulation, a TP 250 Cap Sheet, and an eco-friendly green roof overlay over 80% of the roofing system. This durable, sustainable system provided just the solution the building owner and roof consultant were looking for.

Note: St. Joseph Morrow information courtesy of the institution.

IKO PREMIUM SBS 2-PLY MODIFIED BITUMEN ROOFING SYSTEM

Main Roofs (Steel and concrete decks)

- ½" DensDeck (over steel deck sections)
- 2-ply No. 15 Vapour Barrier in Type 3 Asphalt
- 2 layers 2.6" IKOTherm™ Polyisocyanurate Foam Insulation in Type 3 Asphalt
- Additional 6-8" IKOTherm III Polyisocyanurate Tapered Foam Insulation for crickets
- ½" Fiberboard overlay in Type 3 Asphalt
- Modiflex™ MP-180-FS Base Fully Adhered Base Sheet and base flashings in Type 3 Asphalt
- Torchflex™ TP-250-CAP Heat Welded Cap Sheet in Frostone Grey
- Ginkgo Sustainability Green Roof

COMMERCIAL WARRANTY ISSUED

IKO 15-year Labour & Materials Warranty

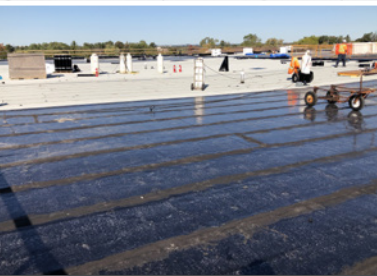
“ IKO is our number one manufacturer. It's all about product reliability. They always provide a solution within 24 hours. ”



– Daniel Pedra
Owner, Pedra Roofing



Specify with Confidence.



CLIENT / OWNER

Toronto Catholic School District

ARCHITECT

ZAS Architects

PROJECT START AND COMPLETION DATES

2 Phases: Phase 1 - Summer 2019; Phase 2 - Spring 2021

MAIN CONTRACTOR

Corebuild Construction

PROJECT SECTOR

Education

ROOFING CONTRACTOR

Pedra Roofing & Sheet Metal Ltd.

COMMERCIAL ROOFING

IKO.COM/COMM



Specify with Confidence.

Find out more about our roofing, waterproofing and insulation products now by talking to an IKO sales representative or your professional contractor, or by contacting us directly at: **Canada 1-855-IKO-ROOF (1-855-456-7663), United States 1-888-IKO-ROOF (1-888-456-7663)**, or visit our website at: **[IKO.COM/COMM](https://www.iko.com/comm)**.

The information contained in the brochure is for general information only and is dispensed in order to aid the design professional. In the case of a discrepancy between the recommendations made in this document and the advice of a design professional, the advice of the design professional should be followed.

The information in this document is subject to change without notice. IKO assumes no responsibility for errors that may appear in this document.