

Metatech™ Finish

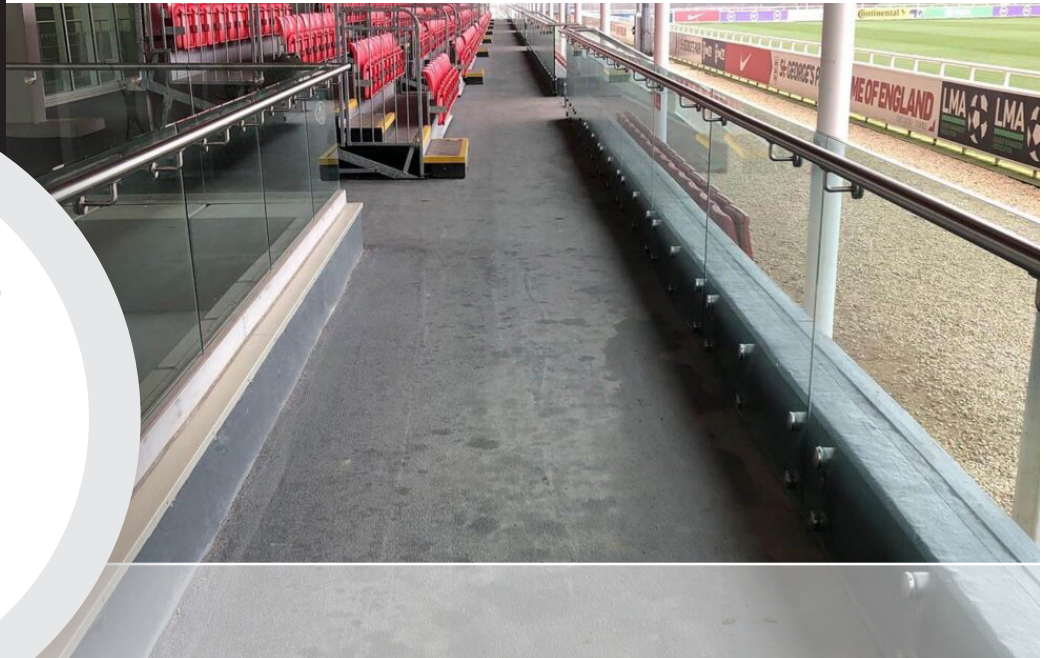
LIQUID WATERPROOFING
MEMBRANE



IKO

COMMERCIAL®

Specify with Confidence.



Metatech Finish

LIQUID WATERPROOFING MEMBRANE

STOCK# 02418310

SIZE: 10 kg (8.2 L)

QUANTITY PER PALLET: 36 pails

PALLET SIZE:

122 cm x 102 cm (48 in x 40 in)

CONSUMPTION RATE:

Depending on the application (please consult the technical application manual):

Broadcasting layer: min. 0.6 kg/m²

Sealer: 0.6-0.8 kg/m² (3.28 ft²)

COLOUR: Stone Grey

Note: All reported values are nominal.

IKO Metatech Finish is a fast-curing two-component resin based on methacrylates.

- FAST-DRYING
- SEAMLESS MEMBRANE
- CATALYST ACTIVATED

IKO PMMA Technology

IKO, a global leader in roofing and waterproofing, has leveraged their world-wide technological roofing expertise to bring the latest liquid waterproofing roofing membrane to North America. IKO Metatech Finish is a PMMA two-component rapid curing material ideally suited to challenging floor installations and repairs in tight areas.

Seamless Simplicity

IKO Metatech Finish is a fast-curing two-component resin based on methacrylates. It is cured by adding the appropriate amount of catalyst (IKO Perkadox™).

Works Great as a Sealer Layer

IKO Metatech Finish is used as a broadcasting layer and sealer layer in liquid waterproofing systems for locations such as balconies and carports. On a carport, IKO Metatech Finish is the hard layer that's in contact with the tires.

Metatech™ Finish

LIQUID WATERPROOFING
MEMBRANE



IKO

COMMERCIAL®

Specify with Confidence.

Technical Characteristics:

PROPERTY	UNITS	RESULT
Density:	g/cm ³	+/- 1.02
Viscosity(25°C, 1s-1):	-	+/- 5 Pas
Hardness(Shore D 23°C):	-	30-40

Mixing Ratio:

SUBSTRATE TEMPERATURE	WEIGHT IKO METATECH CATALYST PER 10 KG PAIL	WEIGHT IKO METATECH CATALYST PER LITRE (1 KG = 0.82 LITRES)
3°C(37.4°F) to 10°C(50°F)	350 g	35 g per litre
11°C(51.8°F) to 20°C(68°F)	250 g	25 g per litre
21°C(69.8°F) to 30°C(86°F)	150 g	15 g per litre
31°C(87.8°F) to 40°C(104°F)	100 g	10 g per litre

The temperature of the substrate should remain min. 3°C higher than the dew point during application and curing.

Curing Time:

Pot life:	+/- 15 min.
Rain-proof:	+/- 30 min.
Can be walked on:	+/- 45 min.
Fully cured:	+/- 3 h.

Application:

Air temperature:	5°C - 30°C
Substrate temperature:	5°C - 40°C
Product temperature:	5°C - 30°C