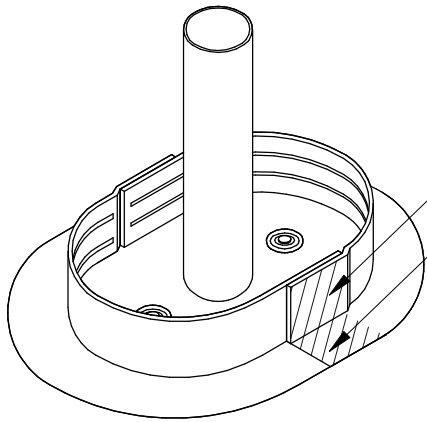
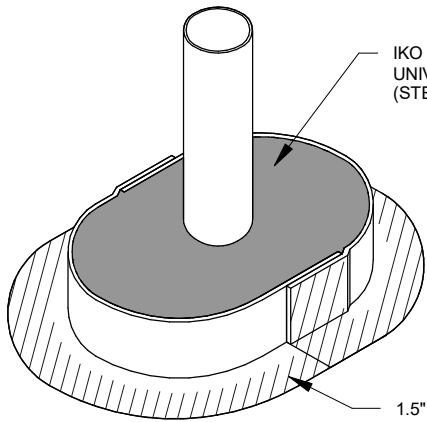


IKO INNOVIFAST APPROVED FASTENER & PLATE - INSTALL 2 AROUND PENETRATION AS SHOWN. PLATES MUST NOT BE LOCATED UNDER THE WELDED FLANGE. INSTALL A TARGET PATCH IF PLATES CONTACT THE WELDED FLANGE.

**IKO INNOVIFLASH SEALANT TPO 2 PIECE POCKET**  
 THE IKO INNOVIFLASH SEALANT POCKET IS A TWO-PIECE MOLDED POCKET WITH A RIGID VERTICAL WALL AND PRE-FORMED FLANGE AS SHOWN



1.5" (38mm) MIN HEAT WELD (STEP 5)  
 1.5" (38mm) MIN HEAT WELD (STEP 6)



IKO INNOVISEAL UNIVERSAL SEALANT (STEP 12)

1.5" (38mm) MIN HEAT WELD ON ENTIRE FLANGE (STEP 12)

**INSTALLATION STEPS:**

1. USING A WIRE BRUSH OR GRINDER, CLEAN PENETRATION DOWN TO BARE METAL FROM JUST BELOW THE MEMBRANE SURFACE TO JUST ABOVE THE TOP OF THE TPO PENETRATION PAN COLLAR TO ALLOW GOOD ADHESION BETWEEN THE PENETRATION AND THE IKO INNOVISEAL UNIVERSAL SEALANT.
2. USING IKO INNOVISEAL TPO MEMBRANE CLEANER, CLEAN THE INSIDE OF THE TPO PENETRATION POCKET. ALSO CLEAN AREAS WHERE THE POCKET OVERLAPS THE UNDERSIDE OF THE POCKET FLANGE AND MEMBRANE.
3. PLACE IKO INNOVIFLASH SEALANT POCKET AROUND THE PENETRATION, NESTING THE TWO SECTIONS OF THE POCKET TOGETHER.
4. USING A 4" X 4" (100mm X 100mm) PIECE OF THICK CARDBOARD AS A HEAT SEPARATION SHEET, PLACE CARDBOARD UNDER OVERLAP SECTION OF PENETRATION PAN.
5. USING A HANDWELDER, WELD THE 2 SECTIONS OF "VERTICAL" COLLAR TOGETHER FROM THE 90 DEGREE VERTICAL/HORIZONTAL ANGLE CHANGE, TO THE TOP OF THE VERTICAL TPO COLLAR, BEING CAREFUL TO AVOID COLD WELDS AND VOIDS. (POSITION THE POCKET SO THE VERTICAL LAP IS AGAINST THE PENETRATION. THIS ALLOWS FOR PROPER PRESSURE TO BE APPLIED TO THE OVERLAP WITH A 2" SILICONE ROLLER.)
6. USING A HANDWELDER, WELD THE 2 SECTIONS OF "HORIZONTAL" COLLAR TOGETHER FROM THE 90 DEGREE VERTICAL/HORIZONTAL ANGLE CHANGE, TO THE OUTSIDE EDGE OF THE HORIZONTAL TPO POCKET FLANGE, BEING CAREFUL TO AVOID COLD WELDS AND VOIDS. (POSITION THE POCKET SO THE HORIZONTAL LAP IS AGAINST THE CARDBOARD. THIS ALLOWS PROPER PRESSURE TO BE APPLIED TO THE OVERLAP WITH A 2" SILICONE ROLLER.)
7. REPEAT STEPS 5 AND 6 TO WELD THE OVERLAP OF THE OPPOSITE SIDE OF THE PENETRATION PAN.
8. IF NECESSARY, TACK WELD THE PENETRATION POCKET IN PLACE AROUND THE PENETRATION, LEAVING A MINIMUM OF 1" (25mm) SPACE BETWEEN THE PENETRATION AND THE TPO PENETRATION COLLAR.
9. WELD THE ENTIRE HORIZONTAL FLANGE TO THE TPO FIELD MEMBRANE.
10. USING A SEAM PROBE, CHECK ALL LAPS FOR INSUFFICIENT WELDS AND VOIDS. MAKE NECESSARY REPAIRS.
11. USING A SMALL PAINT BRUSH, APPLY A THIN COAT OF IKO INNOVIPRIME TPO PRIMER TO THE INSIDE RIM AND AROUND THE TOP OF THE TPO RIM OF THE POCKET. ALSO APPLY PRIMER TO THE MEMBRANE AREA ENCLOSED BY THE POCKET AND THE PENETRATION ITSELF.
12. FILL THE POCKET WITH IKO INNOVISEAL ONE-PART POURABLE SEALANT. USE AN ADEQUATE AMOUNT OF SEALANT TO ENSURE PROPER CONTACT IS MADE WITH THE TOP RIM OF THE POCKET.
13. IKO INNOVISEAL ONE-PART POURABLE SEALANT IS TO BE MAINTAINED BY THE OWNER.

**NOTES:**

1. REFER TO IKO.COM/COMM FOR THE MOST UP TO DATE INSTALLATION INFORMATION.
2. ANY CARPENTRY OR METAL WORK SHOULD BE DESIGNED AND CONSTRUCTED IN ACCORDANCE WITH LOCAL CODE REQUIREMENTS AND/OR PROJECT SPECIFICATIONS. THESE COMPONENTS SHOULD BE REVIEWED AND APPROVED BY A LICENSED DESIGN PROFESSIONAL. IKO ASSUMES NO RESPONSIBILITY FOR THE INSTALLATION OF THE ASSOCIATED COMPONENTS OR DAMAGE TO THE ROOF SYSTEM DUE TO FAULTY INSTALLATION.
3. IKO ONE-PART POURABLE SEALER TO BE MOUNDED TO SHED WATER (MINIMUM DEPTH OF 2" (50 MM). IF THE SEALANT POCKET IS DEEPER THAN 2" (50 MM) IT MAY BE FILLED WITH NON-SHRINKING GROUT BEFORE APPLYING THE ONE-PART POURABLE SEALER.
4. MEMBRANE MUST BE INSTALLED WITHIN 1/2" OF THE PENETRATION.
5. DO NOT INSTALL OVER EXISTING SEALANT POCKETS.
6. DO NOT USE WHEN SERVICE LINES TEMPERATURES EXCEED 160 DEGREES F (71 DEGREES C). PLEASE REFER TO DETAIL T-P-4.

Title: 2 PIECE SEALANT POCKET

Detail Number: T-P-11

Issue Date: 8/01/2025

Maximum Warranty Term: 30-Years

Not to Scale



**COMMERCIAL**

Specify with Confidence.

