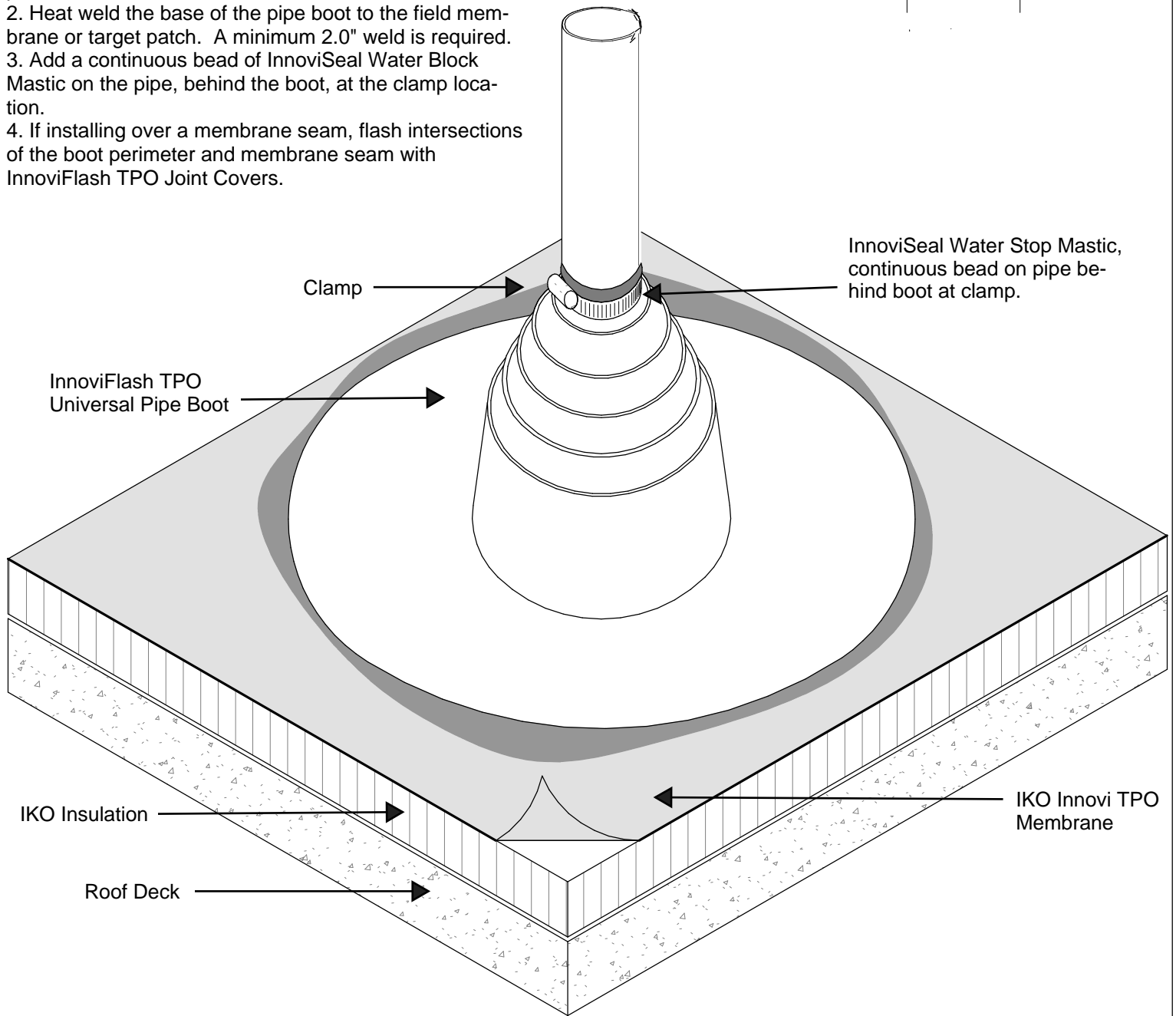
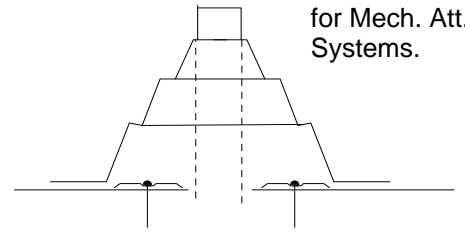


NOTES:

1. For Mechanically Attached systems, install min. four (4) InnoviFast Fasteners and Seam Plates to secure the roof membrane at the base of the pipe. If sufficient space is not available to install the fasteners under the cone of the boot, a 24" X 24" target patch of IKO Innovi TPO must first be installed. See Drawing TP-1 for target patch installation instructions.
2. Heat weld the base of the pipe boot to the field membrane or target patch. A minimum 2.0" weld is required.
3. Add a continuous bead of InnoviSeal Water Block Mastic on the pipe, behind the boot, at the clamp location.
4. If installing over a membrane seam, flash intersections of the boot perimeter and membrane seam with InnoviFlash TPO Joint Covers.

See Note #1 for Mech. Att. Systems.



UNIVERSAL PIPE BOOT

PF-1